

Watershed Information & Conservation Council



Formation of a Groundwater Sustainability Agency (GSA) for the Napa Valley Subbasin



A Tradition of Stewardship
A Commitment to Service

February 27, 2020

www.napawatersheds.org

Overview



- ◆ History & Background
 - How we got here
- ◆ Where is the Napa Valley Subbasin
 - Basin boundaries
- ◆ What is a Groundwater Sustainability Agency (GSA)
 - Membership, Duties & Authority
- ◆ Next GSA meeting – March 17th
 - What's on the agenda

History & Background



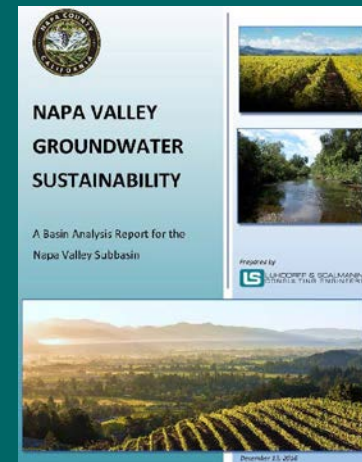
How we got here:

- ◆ Monitoring groundwater since mid-1900s
- ◆ Management actions since mid-1960s
- ◆ 2009-2014 County undertakes comprehensive groundwater studies
- ◆ Groundwater Resource Advisory Committee created in 2011
- ◆ Sustainable Groundwater Management Act (SGMA) signed into law in 2014

History & Background

How we got here (cont.):

- ◆ Annual reporting of groundwater conditions starting in 2015
- ◆ Per SGMA - County submitted an Alternative Groundwater Sustainability Plan (GSP) in December 2016 to DWR
- ◆ July 2019 DWR tentatively does not approve the Alternative GSP
- ◆ October 2019 County provides response to DWR requesting approval



History & Background



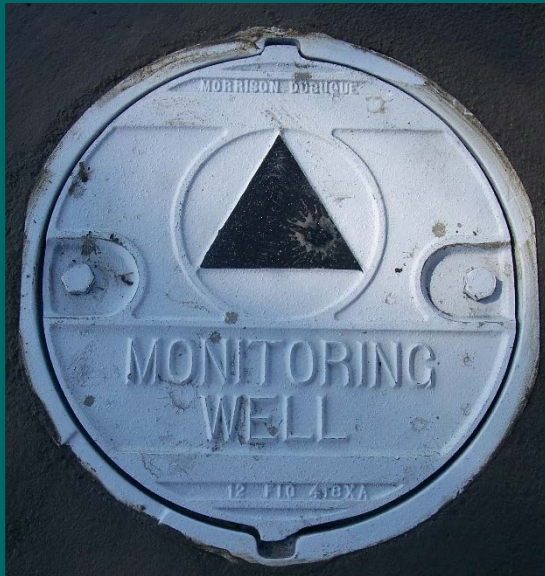
How we got here (cont.):

- ◆ November 2019 DWR completes their final review of the Alternative GSP and elects not to approve the plan
- ◆ On December 17, 2019, per the Water Code, the County adopts a resolution to form a Groundwater Sustainability Agency (GSA) for the “unmanaged” Subbasin
- ◆ On January 7, 2020 the new GSA holds its first meeting

History & Background

How we got here (cont.):

- ◆ On January 7, 2020 the GSA:
 - Elected officers
 - Appointed an Executive Officer
 - Passed a resolution to apply for \$2.6M grant to develop a Groundwater Sustainability Plan (GSP)
 - Adopted a 2020 meeting calendar

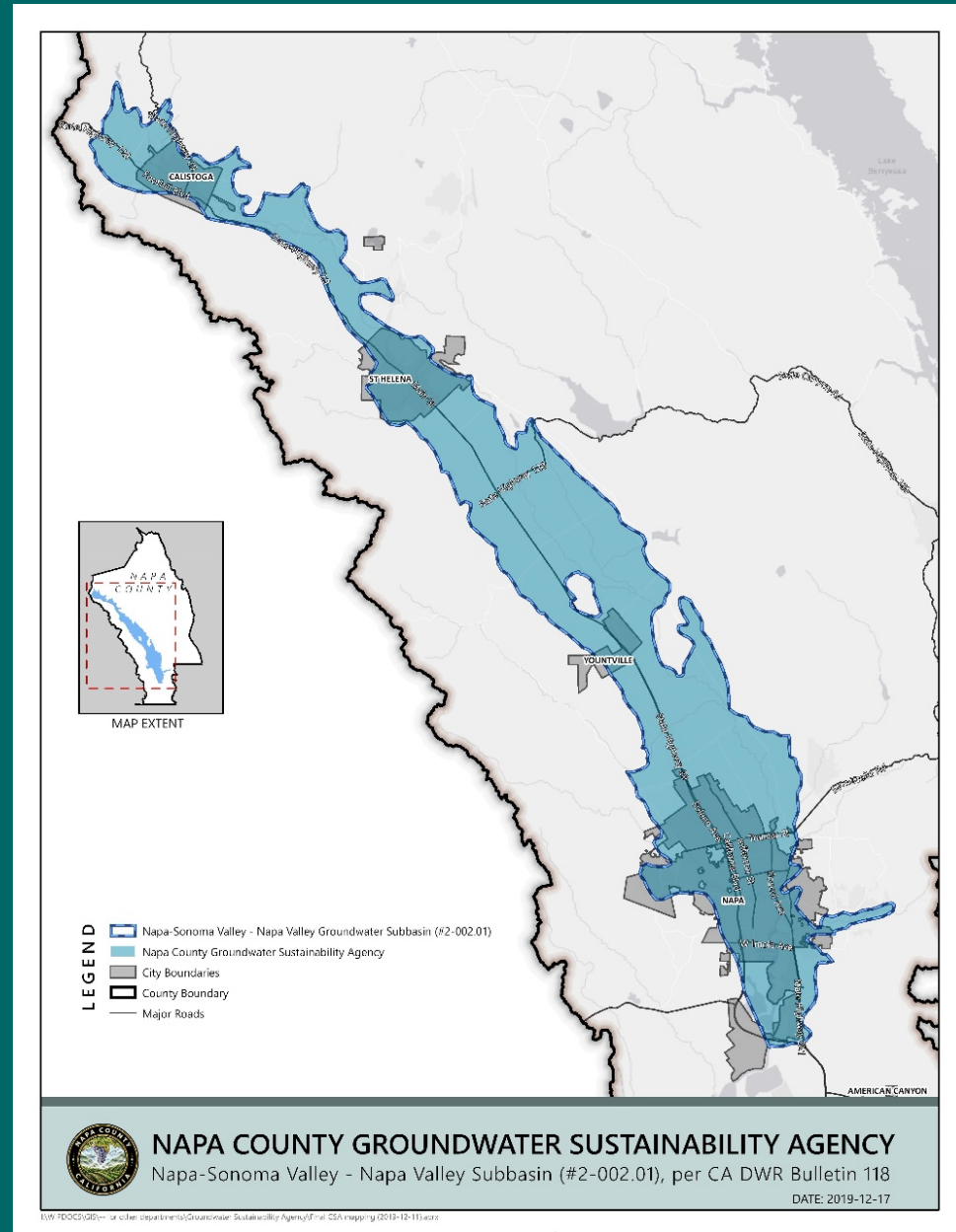


Napa Valley Subbasin

Where is the Napa Valley Subbasin:

Essentially the valley floor north of Hwy 12

Determined by DWR Bulletin 118 - based on geology



What is a Groundwater Sustainability Agency

“SGMA recognizes and preserves the authority of cities and counties to manage groundwater according to their existing powers”

Membership:

- ◆ A GSA can be a local agency or agencies overlying a groundwater basin
- ◆ A county is presumed to be the GSA for unmanaged priority basins
- ◆ A GSA shall consider the interests of all beneficial uses and users of groundwater

What is a Groundwater Sustainability Agency

“SGMA established a new structure for managing groundwater resources at the local level by local agencies”

Duties:

- ◆ To provide for the sustainable management of groundwater in the basin
- ◆ Develop and implement a Groundwater Sustainability Plan (GSP) with participation from interested parties
- ◆ Identify undesirable results, set measureable objectives and establish monitoring programs
- ◆ Prepare and submit annual reports

What is a Groundwater Sustainability Agency

“A GSA may exercise powers to provide the maximum degree of local control and flexibility consistent with groundwater sustainability goals”

Authority:

- ◆ May adopt rules and regulations, and establish ordinances by resolution
- ◆ May hold property, acquire and exchange water rights and conduct investigations
- ◆ May regulate groundwater extraction, set and collect fees, require metering and conduct enforcement
- ◆ Powers do not supersede local land use authorities of cities and counties

Next GSA Meeting – March 17th

What's on the GSA's agenda:

- ◆ Adoption of bylaws
- ◆ Receive a report on required GSP contents and plan development timeline
- ◆ Discuss community engagement to support planning process
- ◆ Receive a status update on planning grant from DWR



Groundwater info on WICC

Groundwater

Groundwater Basics This page provides essential educational information regarding groundwater, such as: What is groundwater? Why is groundwater important? What do we know about groundwater? What are we doing about groundwater?

Groundwater Monitoring On this page you can read a brief summary of current monitoring results and trends in Napa County.

DIY Groundwater Monitoring Tool Available on Loan-Basis This page describes the County's new program for residents interested in measuring their own well depths.

Use the Map! Click on an area in the map below and you will find a link to more details about groundwater conditions in that specific subarea of Napa County. You may also enter an address, city or zip above the legend to zoom to an area of interest. Please note that some areas do not have additional subarea monitoring information.

2015 Napa County Annual Groundwater Monitoring Report (31.6 MB)

DIYMonitoring_Flyer (271.3 KB)

Agricultural Irrigation Well

Well Cap

Water Basins

of Water is summarized, groundwater data, the boundaries of various basins. The 2014 groundwater flow sets basin priorities based upon information.

Map Layer

Information

Map Layer

Information

NapaCounty-133

FID: NapaCounty-133
WellID: 3
NapaCounty-133

Click image to view larger

SRC	NapaCounty
Subarea	NVE_Yount
Countdown	111
YearsMo	41
B118_Sub	2-2.01
B118_Basin	NAPA-SONOMA VALLEY
B118_Sub_1	NAPA VALLEY

Groundwater Information

Name: / (parent folder)

Groundwater KMZs

Subarea Information

2015 Napa County Annual Groundwater Monitoring Report

CA Statewide Groundwater Elev. Monitoring (CSGEM) Website

CASGEM Network Plan 2014

DWR Groundwater Bulletin 118

Groundwater Conditions and Monitoring Recommendations 2011

Groundwater Information Center - CA Dept of Water Resources

Groundwater: Stateholder Assessment 2010 4/8/15 03:12 pm

Hydrogeologic Characterization of Groundwater Cond Updated 2013 4/8/15 03:42 pm

Napa County 2014 Groundwater Monitoring Report 6/30/15 10:54 am

Napa County California Statewide Groundwater Elevation Monitoring (CASGEM) Network Plan 6/30/15 11:03 am

Napa County Groundwater Monitoring Plan 2013 7/6/15 12:04 pm

September 2015 Interim Summary Report on Groundwater Level Conditions 9/15/15 04:11 pm

Understanding CA Groundwater - Stanford Univ. 6/30/15 10:55 am

NAPA COUNTY GROUNDWATER SUSTAINABILITY Annual Report - Water Year 2018

Estimated Depth to Groundwater, Spring 2010

- 0-10 feet
- 10-20 feet
- 20-30 feet
- 30-40 feet
- 40-250 feet

Groundwater Flow Contours - Spring

Groundwater Flow Contours - Fall

Yountville

Napa Soda Springs

Enchanted Hills

Lokoya

Napa

Orbow Public Market

Salvador

Vichy

Imola

Vineburg

Sonobe Winery

Vineyard

Enchanted Hills

Yountville

Napa Soda Springs

Napa

Orbow Public Market

Salvador

Vichy

Imola

Vineburg

Sonobe Winery

Vineyard

Interactive groundwater timeline coming soon!

www.napawatersheds.org

Questions?

<http://eepurl.com/bWgdin>

Sign-up on the GSA email list!



A Tradition of Stewardship
A Commitment to Service

Jeff Sharp
707-259-5936
jeff.sharp@countyofnapa.org

