

LNU Complex – Top Concerns

- **Flood Control** (Vacaville)
- **Debris Jams** (Water Operations & Flood)
- **Municipal Water Quality** (Interdam Reach & Lake Berryessa)

Alex Rabidoux • ARabidoux@scwa2.com
Solano County Water Agency

North Shore | Eticuera Creek

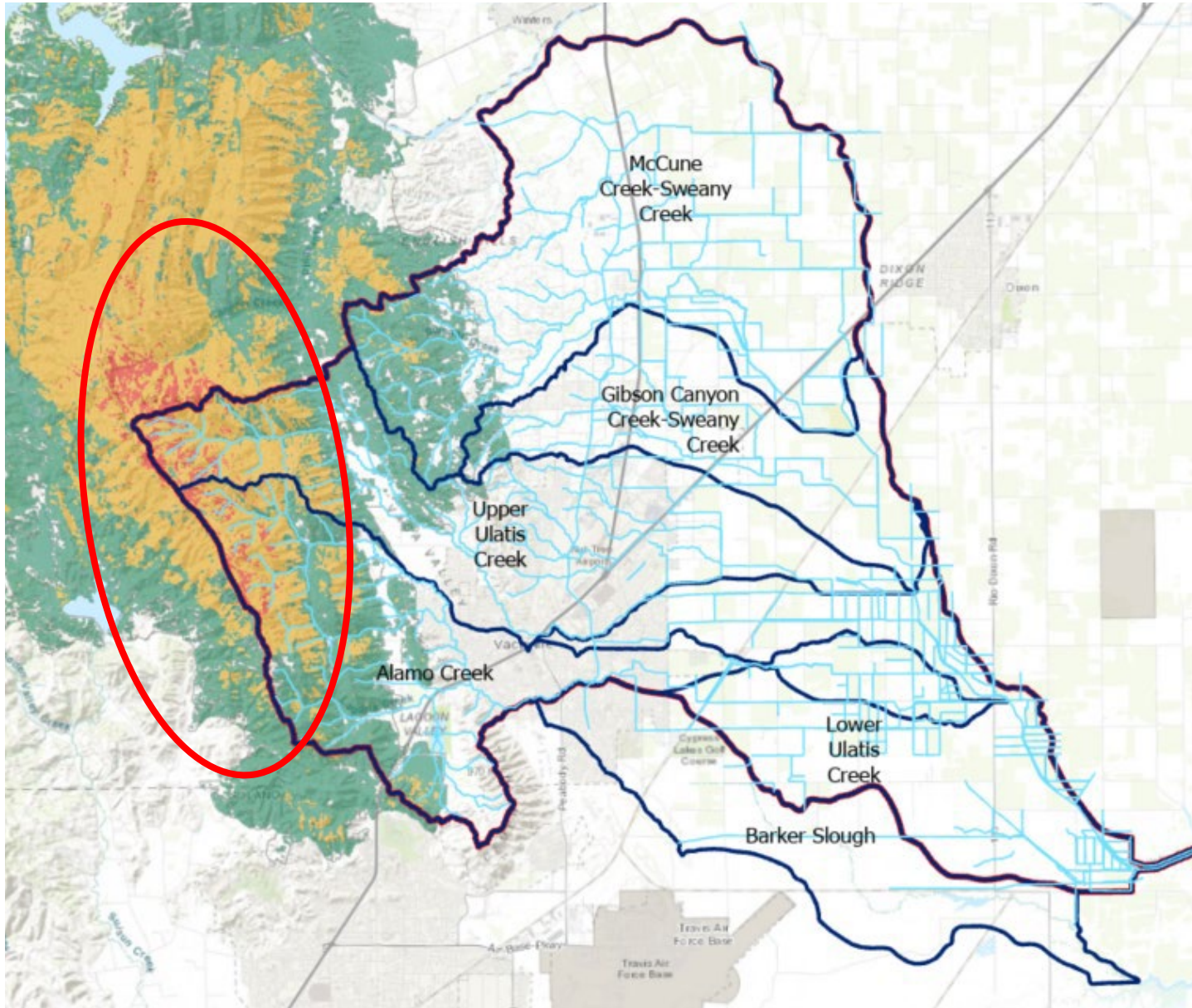
Flood Control

Areas of Severe Burn Intensity at Napa-Solano Boundary

- Ulatis-Alamo Ck, Pleasants Ck, Wragg Canyon Ck
- City of Vacaville is D/S of Ulatis-Alamo Creek (100,000 people)
- History of Flooding (1,000 residents in 2005)

Mt Vaca | Napa-Solano Bdry

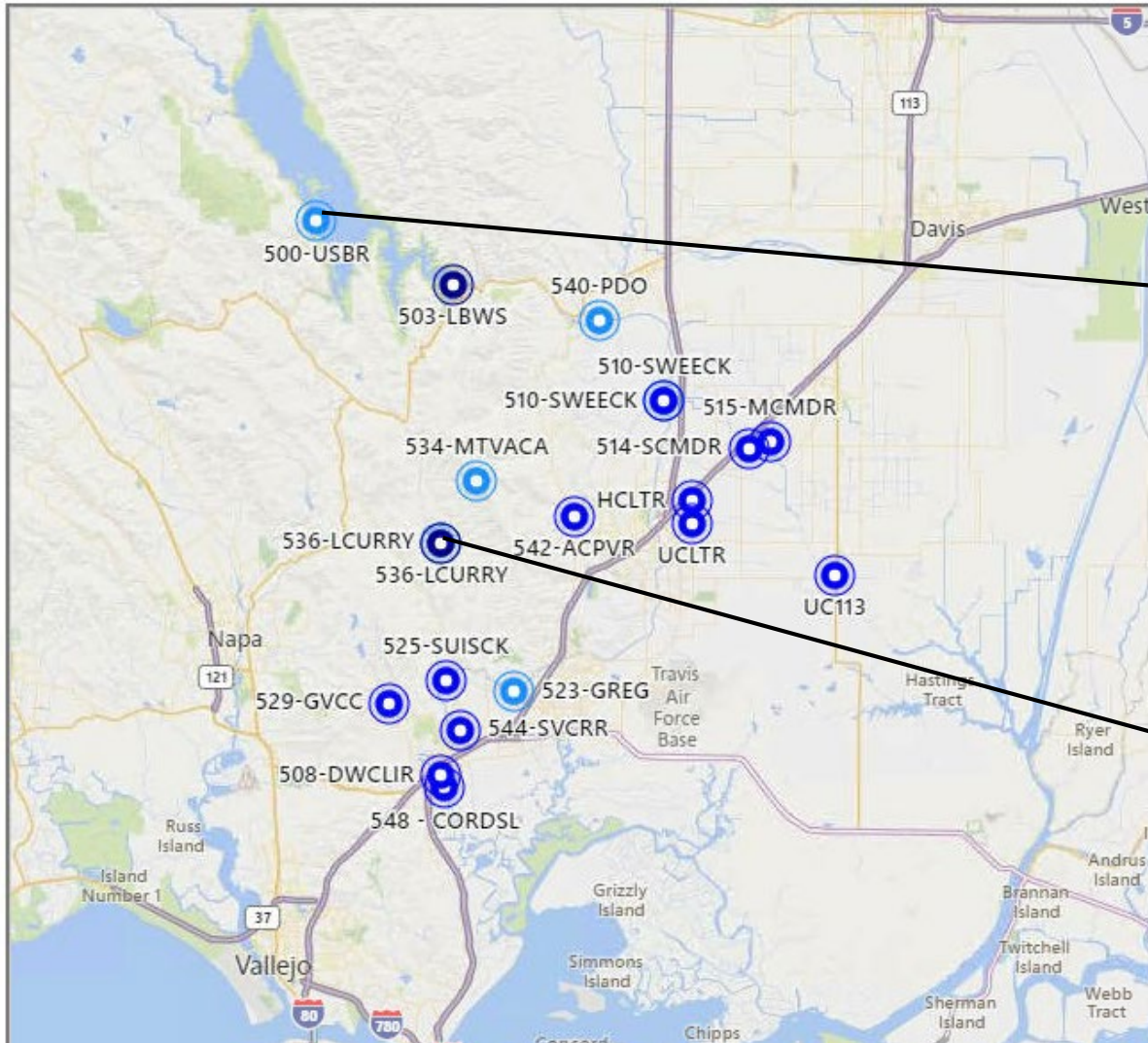
Flood Control – Rapid Post-fire Modeling



Ulatis Flood Control Project

Flood Control – Real Time Monitoring

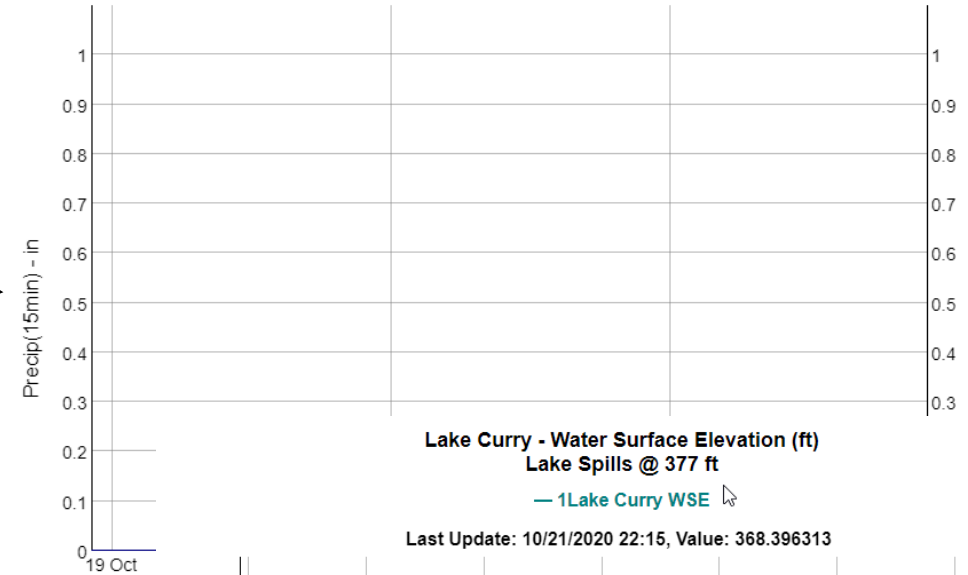
<https://www.scwamonitoring.com/floodmap/index.htm>



USBR, Rainfall (inches)

— 1USBR Precip-15min — 2USBR Precip-24Hr

Last Update: 10/21/2020 22:15, Value: 0, 0



Lake Curry - Water Surface Elevation (ft)
Lake Spills @ 377 ft

— 1Lake Curry WSE

Last Update: 10/21/2020 22:15, Value: 368.396313



Debris Jams



**Creek Walk (20-mi)
Ulati & Alamo Cks**



Cross Vanes | Pleasants Creek

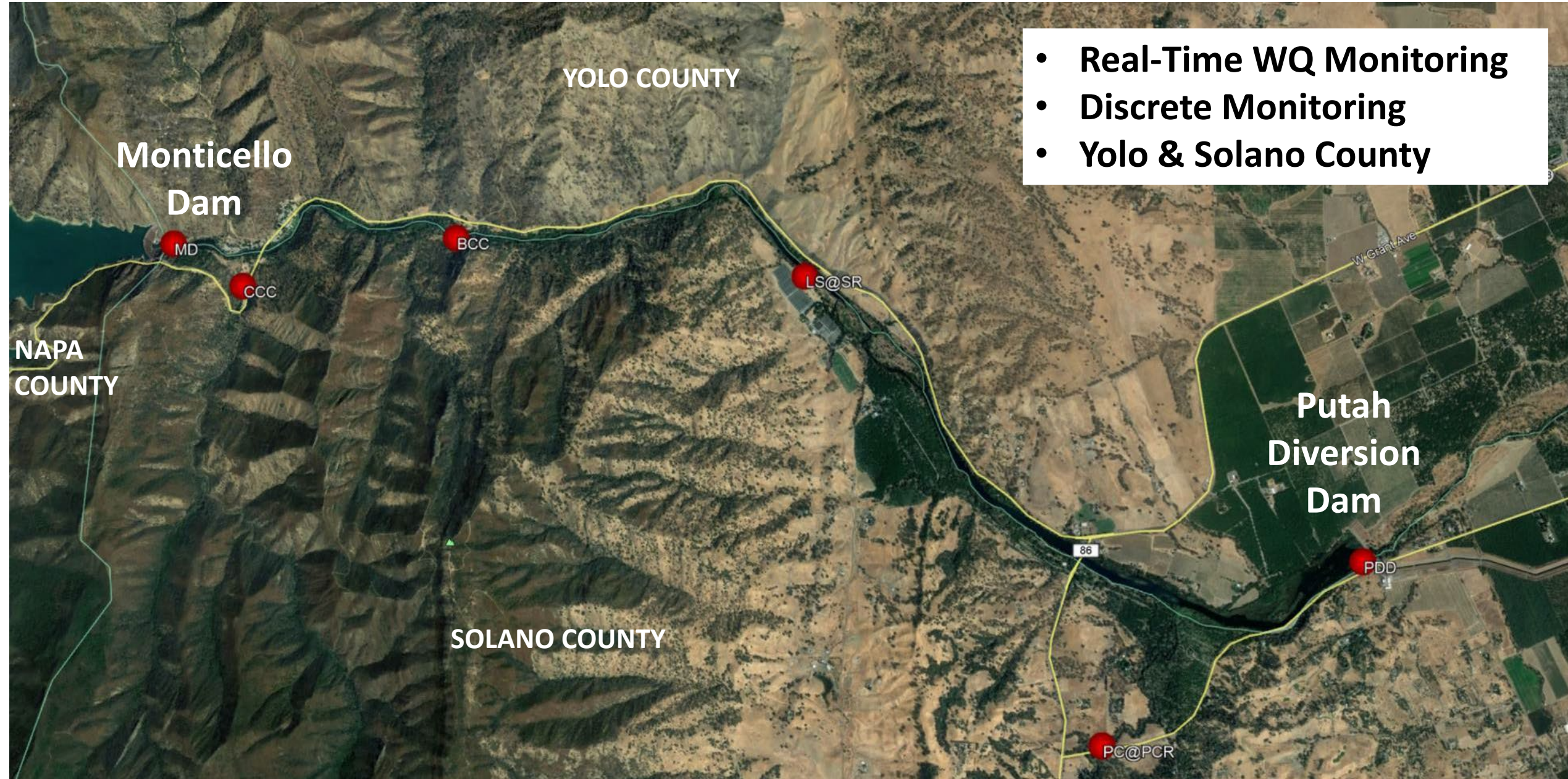


Pleasants Creek (32-64 Cross Vanes)

- Largest source of sediment
- Turbidity > 1,000 NTU every year
- Entire Watershed Burnt



Municipal Water Quality | Interdam Reach



Municipal Water Quality | Interdam Reach



**Cold Canyon Ck @ Putah Ck
(D/S Monticello Dam)**

Municipal Water Quality | Putah South Canal



Real-Time Monitoring

Solano County Water Agency

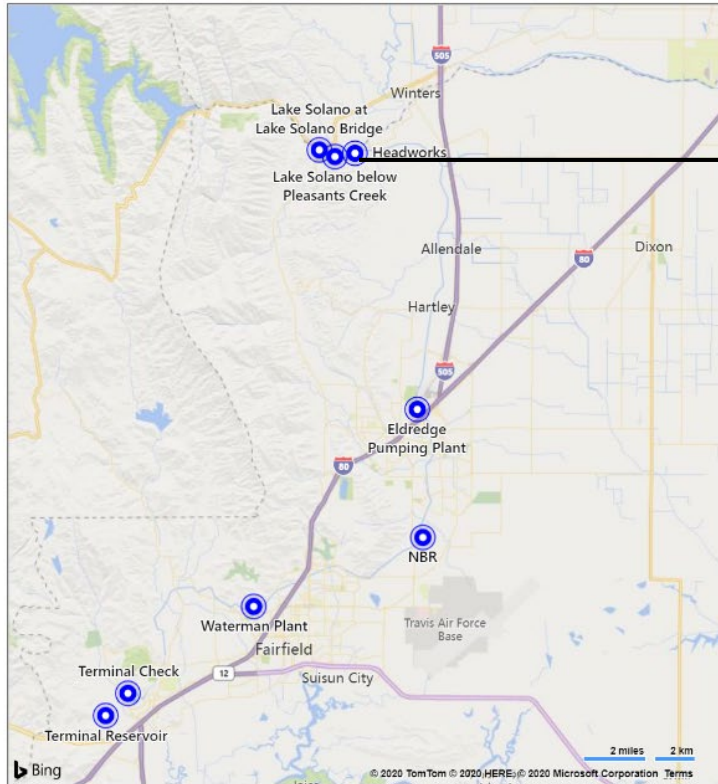
Monitoring Home North Bay Aqueduct Solano Project Water Quality Putah Creek Real-Time Rainfall and Creek Levels Lake Berryessa Login

- SCWA Home
- Solano Project WQ
 - Lake Solano at Lake Solano Bridge
 - Lake Solano below Pleasants Creek
 - Headworks
 - Eldredge Pumping Plant
 - NBR
 - Waterman Plant
 - Terminal Check
 - Terminal Reservoir

Solano Project Water Quality

All of the data and information on these plots is raw, unrefined, and has not yet been reviewed by qualified staff. The plots come directly from the monitoring equipment and are displayed in unedited format. All monitoring equipment is subject to intermittent fluctuations, or spikes, which can cause invalid readings. These plots are updated every 15 minutes and may not reflect current readings. The data and information is subject to change at any time for a variety of reasons.

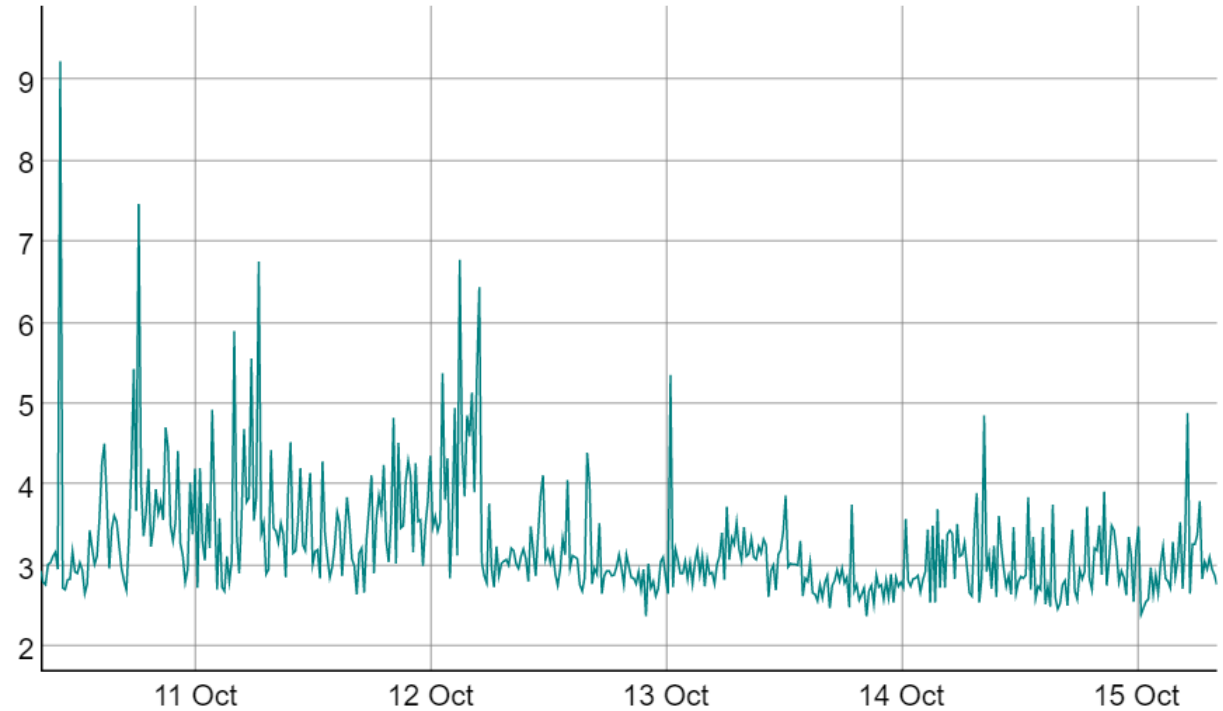
All times are Pacific Standard. Add one hour during daylight savings time.
Click on a Map Icon to retrieve a data webpage for that station. Hover your mouse over a Map Icon to display a popup graph of a single station's data.



NTU

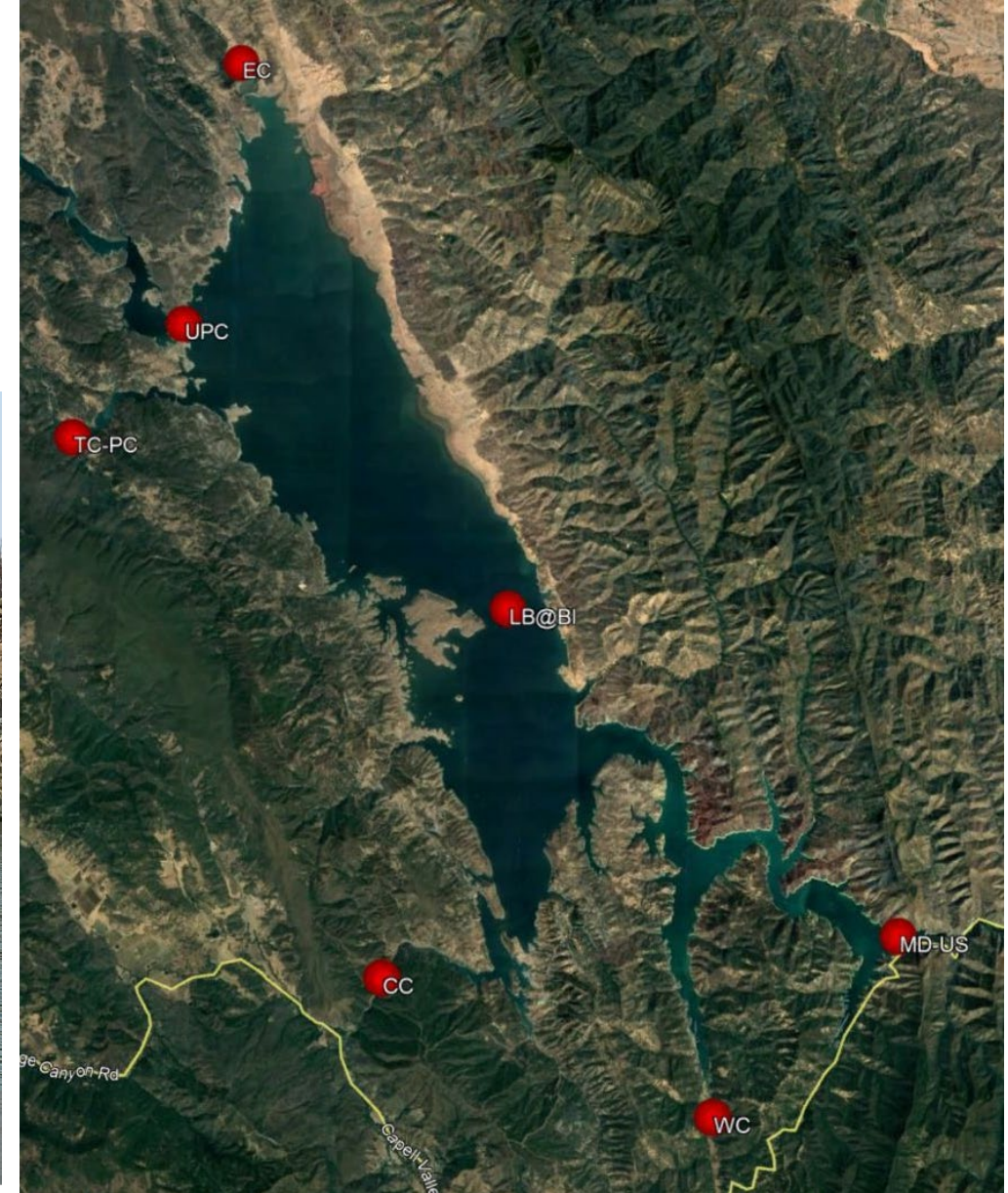
PDDWQ Turbidity (1004.600)

— 1PDDWQ Turbidity



Municipal Water Quality | Lake Berryessa

- Real-Time WQ Monitoring
- Discrete Monitoring
- Napa County
 - Partner with Napa County Staff
 - Similar to 2015 Valley Fire





- **Berryessa Highlands**
- **95 Homes Burned**
- **2,000-ft from Lake Berryessa**
- **Stormwater BMPs**
 - **Coordination with Napa County**



- **Spanish Flat Mobile Home Park**
- **2,000-ft from Lake Berryessa**
- **Active stream on West Edge of asphalt**
- **Stormwater BMPs**
 - Coordination with Napa County

**KENWOOD
FENCECO**
707-527-1347