

NAPA COUNTY RESOURCE CONSERVATION DISTRICT

FINAL CONSTRUCTION PLANS FOR NAPA RIVER RUTHERFORD REACH RESTORATION PROJECT OCTOBER 2008

PROJECT MANAGER

608 ZION
NAPA COUNTY RESOURCE CONSERVATION DISTRICT
1203 JEFFERSON STREET, SUITE 300 B, NAPA, CA 94959
TELEPHONE: (707) 252-4199

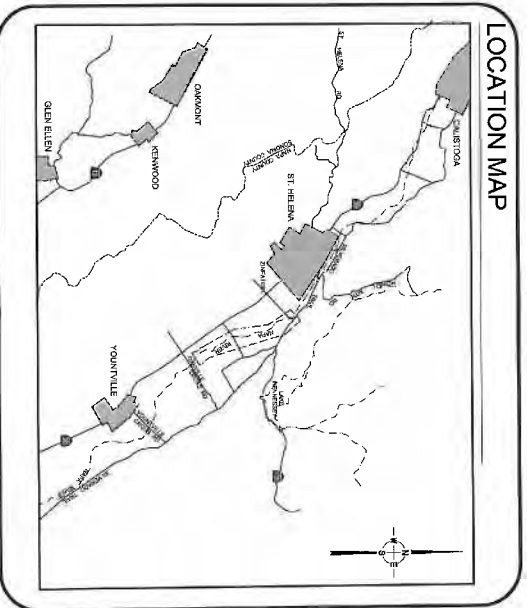
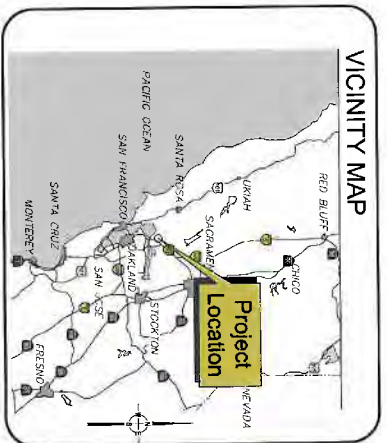
APPROVED BY:

SHEET INDEX	
2	COVER SHEET - 001
3	SEE ACCESS - 002
4	GENERAL NOTES - 003
5	GRADING NOTES - 003A
6	GRADING SHEET - 02
7	GRADING SHEET - 02
8	GRADING SHEET - 02
9	GRADING SHEET - 02
10	GRADING SHEET - 02
11	GRADING SHEET - 02
12	GRADING SHEET - 02
13	DETAILS SHEET - 01
14	DETAILS SHEET - 02
15	DETAILS SHEET - 03
16	DETAILS SHEET - 04
17	DETAILS SHEET - 05
18	DETAILS SHEET - 06
19	DETAILS SHEET - 07
20	DETAILS SHEET - 08
21	DETAILS SHEET - 09
22	DETAILS SHEET - 10
23	DETAILS SHEET - 11
24	DETAILS SHEET - 12
25	DETAILS SHEET - 13
26	DETAILS SHEET - 14
27	DETAILS SHEET - 15

(date)

(date)

(date)



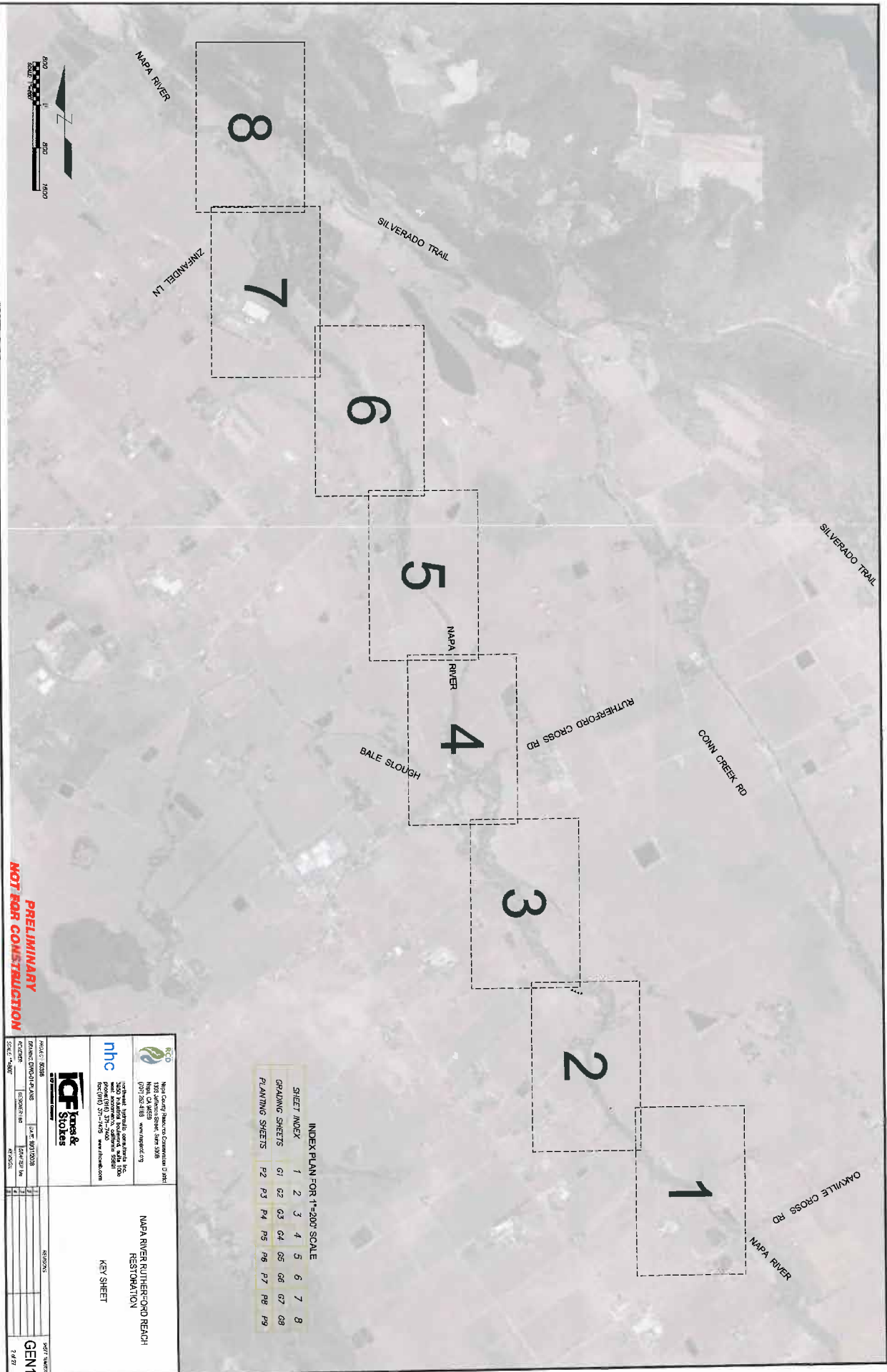
**PRELIMINARY
NOT FOR CONSTRUCTION**

<p>Napa County Resource Conservation District 1302 Jefferson Street, Suite 300B Napa, CA 94959 (707) 252-4199 www.nrcd.com</p>		<p>DATE: 10/13/08 SCALE: AS SHOWN</p>	
<p>ICF Jones & Stokes 10000 ICF Drive San Diego, CA 92121 (619) 591-7170 www.icf.com</p>		<p>PROJECT NUMBER: 10000 ICF Drive PROJECT LOCATION: 1000 ICF Drive PROJECT NAME: NAPA RIVER RUTHERFORD REACH RESTORATION PROJECT SCALE: AS SHOWN</p>	
<p>NAPA RIVER RUTHERFORD REACH RESTORATION COVER SHEET</p>		<p>SHEET NUMBER: 1 OF 27</p>	

DATE: 10/13/08
SCALE: AS SHOWN

NAPA RIVER RUTHERFORD REACH RESTORATION COVER SHEET

SHEET NUMBER: 1 OF 27

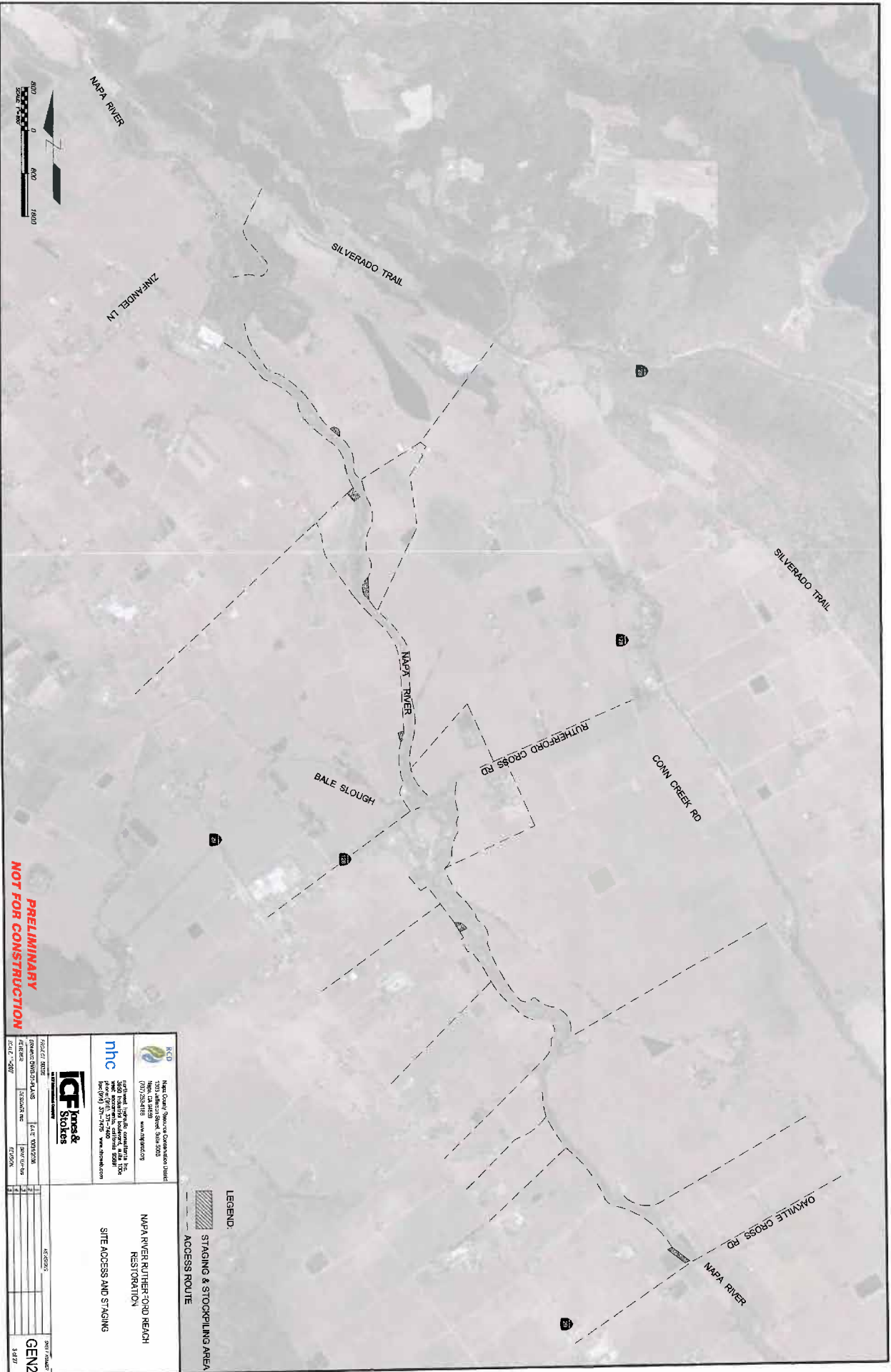


**PRELIMINARY
NOT FOR CONSTRUCTION**





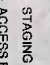
INDEX PLAN FOR 1"=200' SCALE

SHEET INDEX	1	2	3	4	5	6	7	8
GRADING SHEETS	G1	G2	G3	G4	G5	G6	G7	G8
PLANTING SHEETS	P2	P3	P4	P5	P6	P7	P8	P9

		Napa County Regional Commission (RTO) 1100 Jefferson Street, Suite 200B Napa, CA 94950 (707) 251-1111 www.rtoapc.org	
		Napa County Health Care 1000 Napa Street, Suite 100 Napa, CA 94950 (707) 251-1111 www.nhc.com	
		ICF Stokes & Stokes 1000 Napa Street, Suite 100 Napa, CA 94950 (707) 251-1111 www.icfstokes.com	
PROJECT: 8008 DRAWING: DIVISION PLAN DATE: 08/17/2018 SCALE: AS SHOWN		SHEET NO.: 1 SHEET TITLE: KEY SHEET	
NAPA RIVER RUTHERFORD REACH RESTORATION		SHEET NUMBER: GEN1 DATE: 7/2/18	



**PRELIMINARY
NOT FOR CONSTRUCTION**

 (Napa County) Shasta County 7303 Silverado Street, Suite 5000 Napa, CA 94950 (707) 253-8888 www.kcd.org		 National Highway Construction 1000 West 10th Street, Suite 100 Napa, CA 94950 (707) 253-7175 www.nhc.com	
 ICF Jones & Stokes 1000 West 10th Street, Suite 100 Napa, CA 94950 (707) 253-7175 www.icfjones.com		PROJECT INFORMATION PROJECT NAME: NAPA RIVER RUTHERFORD REACH RESTORATION PROJECT NUMBER: 14287 DATE: 08/27/14 SCALE: 1"=500' REGION:	
LEGEND:  STAGING & STOCKPILING AREA  ACCESS ROUTE		PROJECT TITLE: NAPA RIVER RUTHERFORD REACH RESTORATION SITE ACCESS AND STAGING	
DATE: 08/27/14 DRAWN BY: [Blank] CHECKED BY: [Blank]		SHEET NUMBER: GEN2 14287	

**GRADING SHEET
LEGEND**

Non-Native / Pierce's
Disease Host Plant
Removal Area



Utility Poles



Intake Structure



Drainage Outfall



Well*



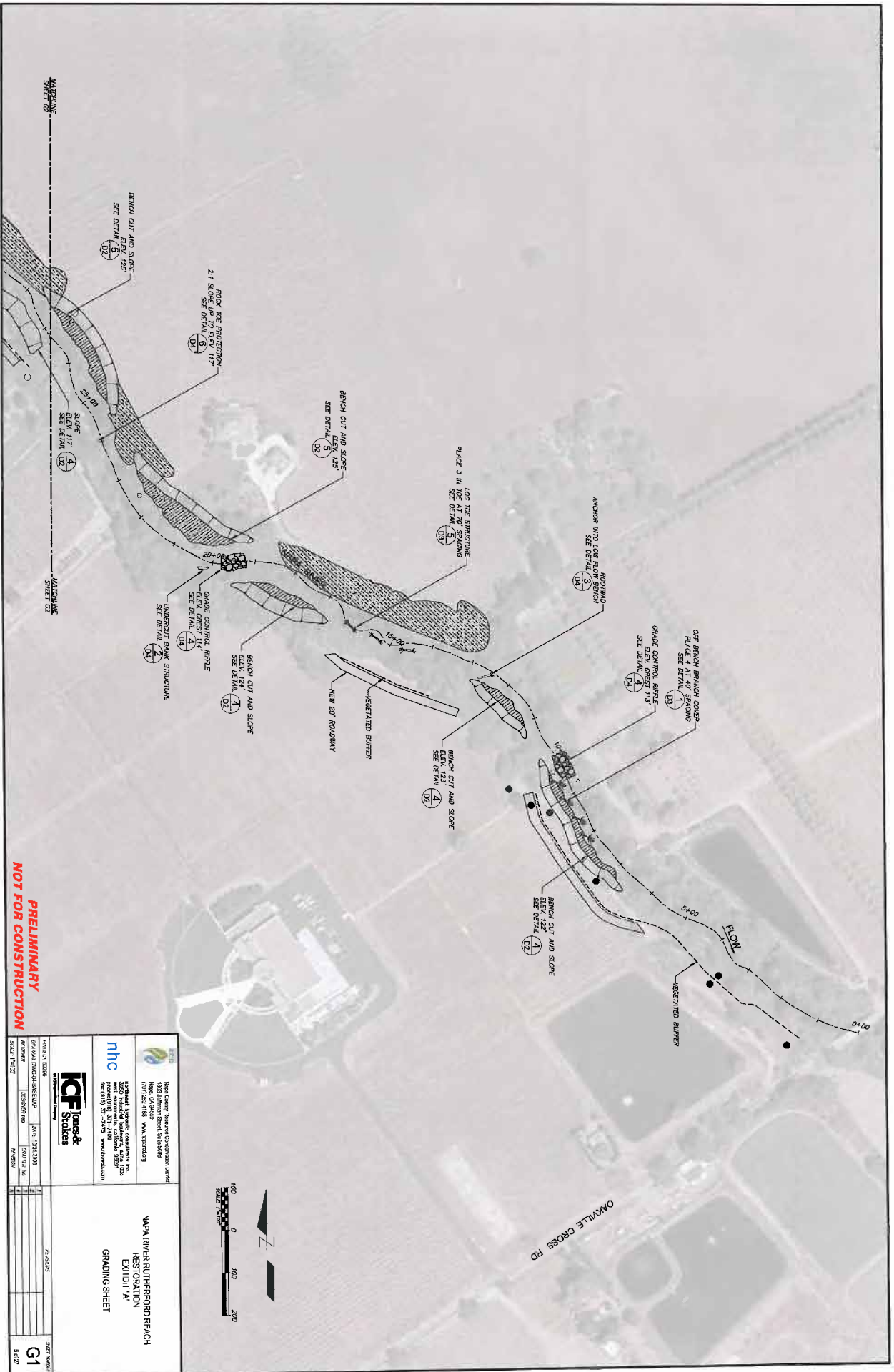
Pump



*Wells provide potential point of connection for temporary irrigation systems.

**PRELIMINARY
NOT FOR CONSTRUCTION**

		ICD Inland Canal Reunion Commission District 1003 Jefferson Street, Suite 600B Reno, CA 95529 (775) 224-4200 www.icdwater.org		NAPA RIVER RUTHERFORD BEACH RESTORATION GENERAL NOTES	
		National Hydraulic Control Unit, Inc. 1000 Westgate Drive, Building 5550A Reno, NV 89521 Tel: (775) 317-7173 www.nhcusa.com			
PROJECT NO: 0628	DATE: 10/1/2008	DATE: 10/1/2008	DATE: 10/1/2008	DATE: 10/1/2008	DATE: 10/1/2008
DESIGNED BY: WASH/MLM	SCALE: 1"=20'	REVISION NO: 1	REVISION:	REVISION:	REVISION:
SCALE: 1"=20'	SCALE: 1"=20'	SCALE: 1"=20'	SCALE: 1"=20'	SCALE: 1"=20'	SCALE: 1"=20'
ICF Jones & Stokes 1000 Westgate Drive, Building 5550A Reno, NV 89521 Tel: (775) 317-7173 www.icfjones.com					SHEET NUMBER GEN3 4 of 27



PRELIMINARY
NOT FOR CONSTRUCTION

Napa County Watershed Collaborative, Inc. 1600 Jackson Street, Suite 808 Napa, CA 94959 (707) 224-9100 www.nwcollab.org		ICF Stokes & Co. 2000 Sycamore Drive, Suite 100 San Francisco, CA 94115 (415) 774-7470 www.stokes.com	
PROJECT: NAPA RIVER AT HERFORD BEACH DRAWING: GRADING PLAN SHEET DATE: 07/15/2010 SCALE: 1" = 20'-0"		PROJECT NO.: 1000000000 DRAWING NO.: 1000000000 SCALE: 1" = 20'-0"	
PROJECT: NAPA RIVER AT HERFORD BEACH DRAWING: GRADING PLAN SHEET DATE: 07/15/2010 SCALE: 1" = 20'-0"		SHEET NO.: 1 TOTAL SHEETS: 1	





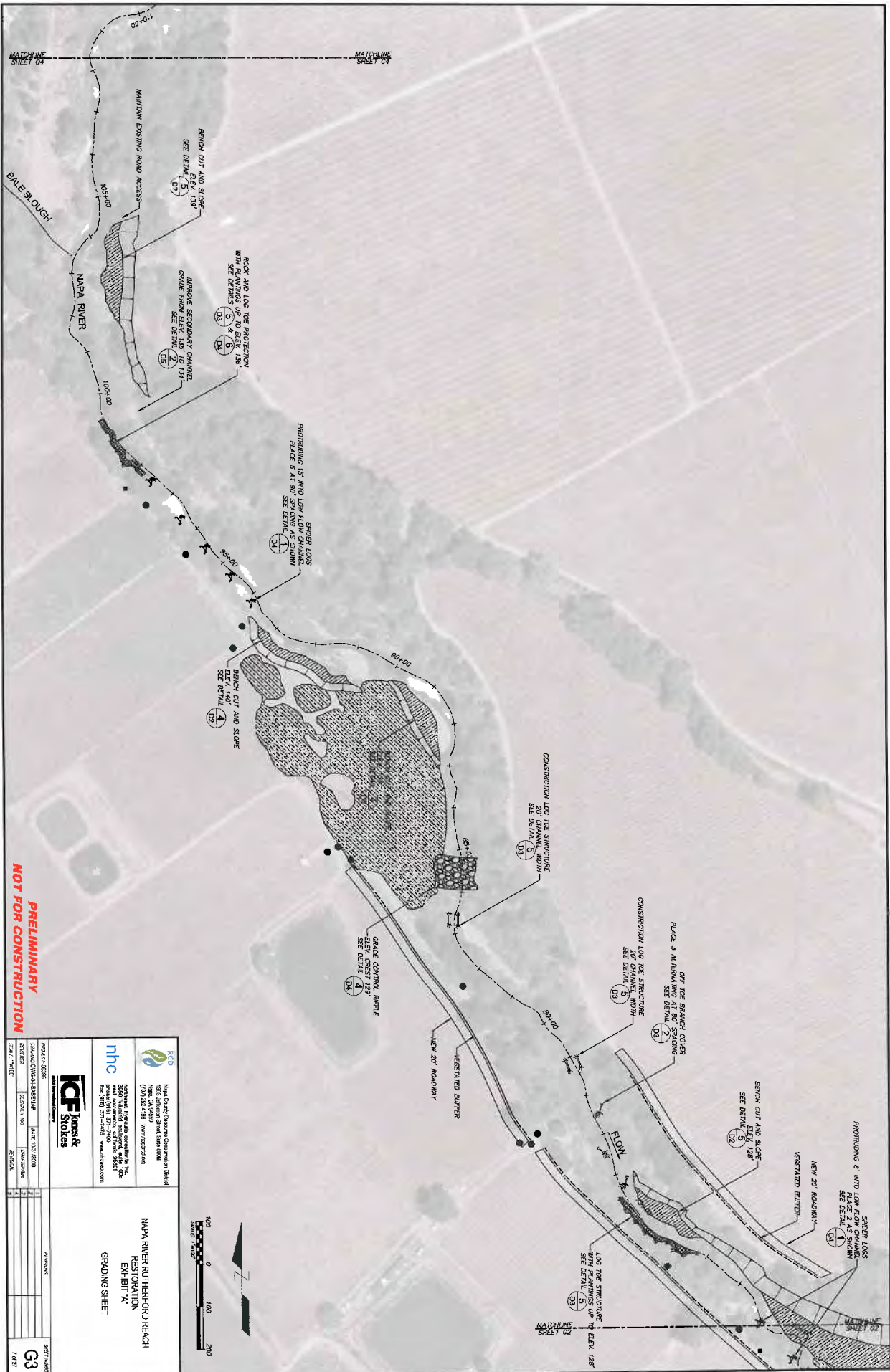
OMVILLE CROSS RD



NOTE: Location and extent of rock toe protection from station 624+00 to station 630+00 may be reduced based on additional topographic and hydraulic analyses conducted during final design.

PRELIMINARY
NOT FOR CONSTRUCTION

 Napa County Planning Commission Staff 1900 Jackson Street, Suite 202B Napa, CA 94959 (707) 251-1915 www.napacog.org		 ICF Stokes 5000 Valley Road, Suite 100 Napa, CA 94950 (707) 251-1915 www.icfstokes.com	
PROJECT NOISE	624+00	DATE	10/12/2018
DESIGNED BY	625077	SCALE	AS SHOWN
CHECKED BY	625077	DATE	10/12/2018
APPROVED BY	625077	DATE	10/12/2018
NAPA RIVER RUTHERFORD REACH RESTORATION EXHIBIT 'A' GRADING SHEET		SHEET NO. G2 OF 2	



PRELIMINARY
NOT FOR CONSTRUCTION

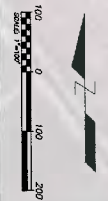
PROJECT: 0036		DATE: 10/10/2018		SHEET NUMBER: 3	
DESIGNED BY: JACOB HAN		DRAWN BY: JACOB HAN		SCALE: 1"=40'	
PROJECT: 0036		DATE: 10/10/2018		SHEET NUMBER: 3	
DESIGNED BY: JACOB HAN		DRAWN BY: JACOB HAN		SCALE: 1"=40'	

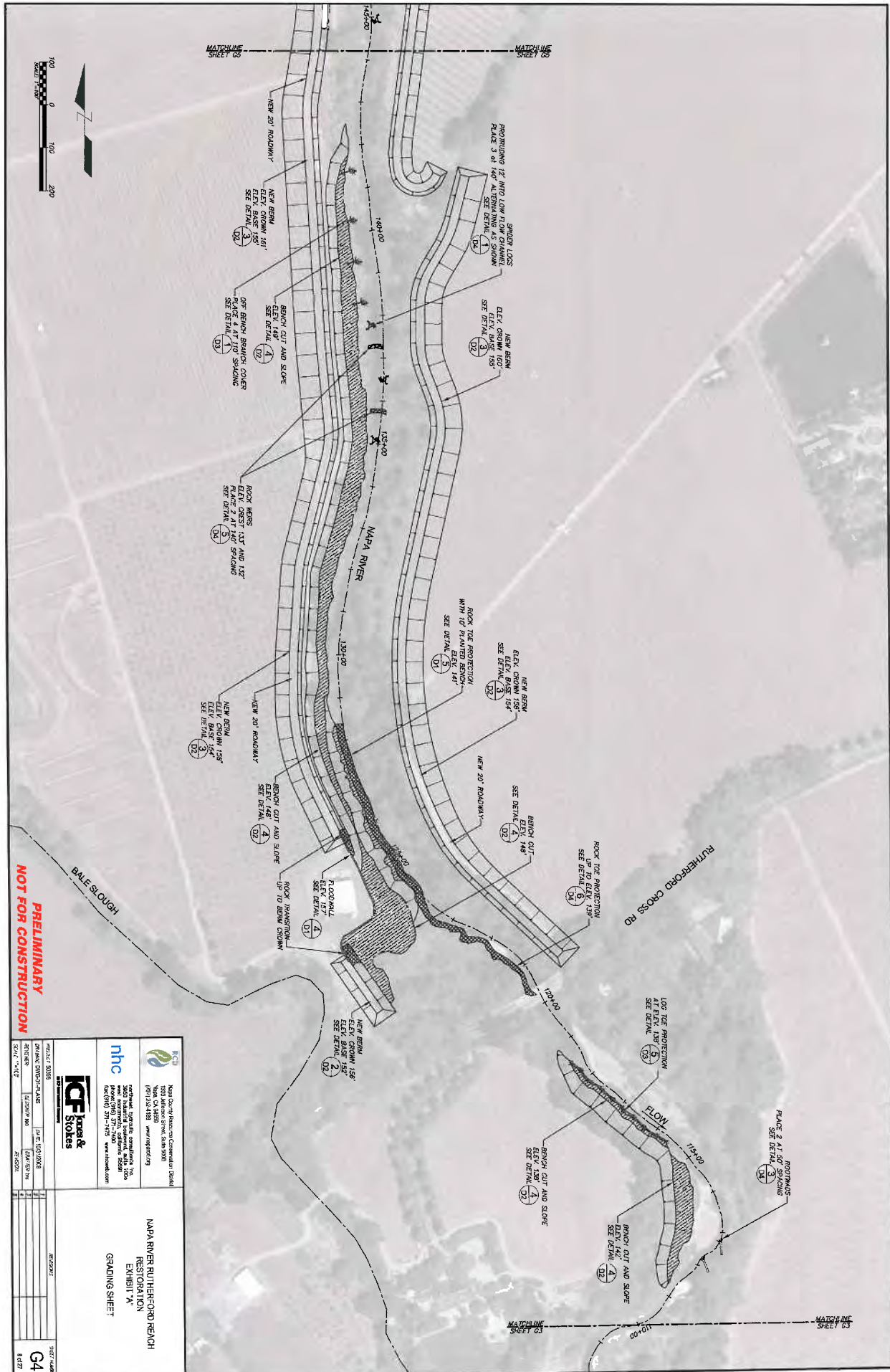
hnc
Napa County Natural Resources Conservation District
1335 Jefferson Street, Suite 200
Napa, CA 94959
(707) 254-4489
www.nrcd.ca.gov

ICF Jones & Stokes
3000 Redwood Highway, Suite 100
Napa, CA 94959
(707) 254-4489
www.icfjones.com

NAPA RIVER BUTTEFORD BEACH RESTORATION EXHIBIT 'A'
GRADING SHEET

DATE: 10/10/2018
SHEET NUMBER: 3
SCALE: 1"=40'

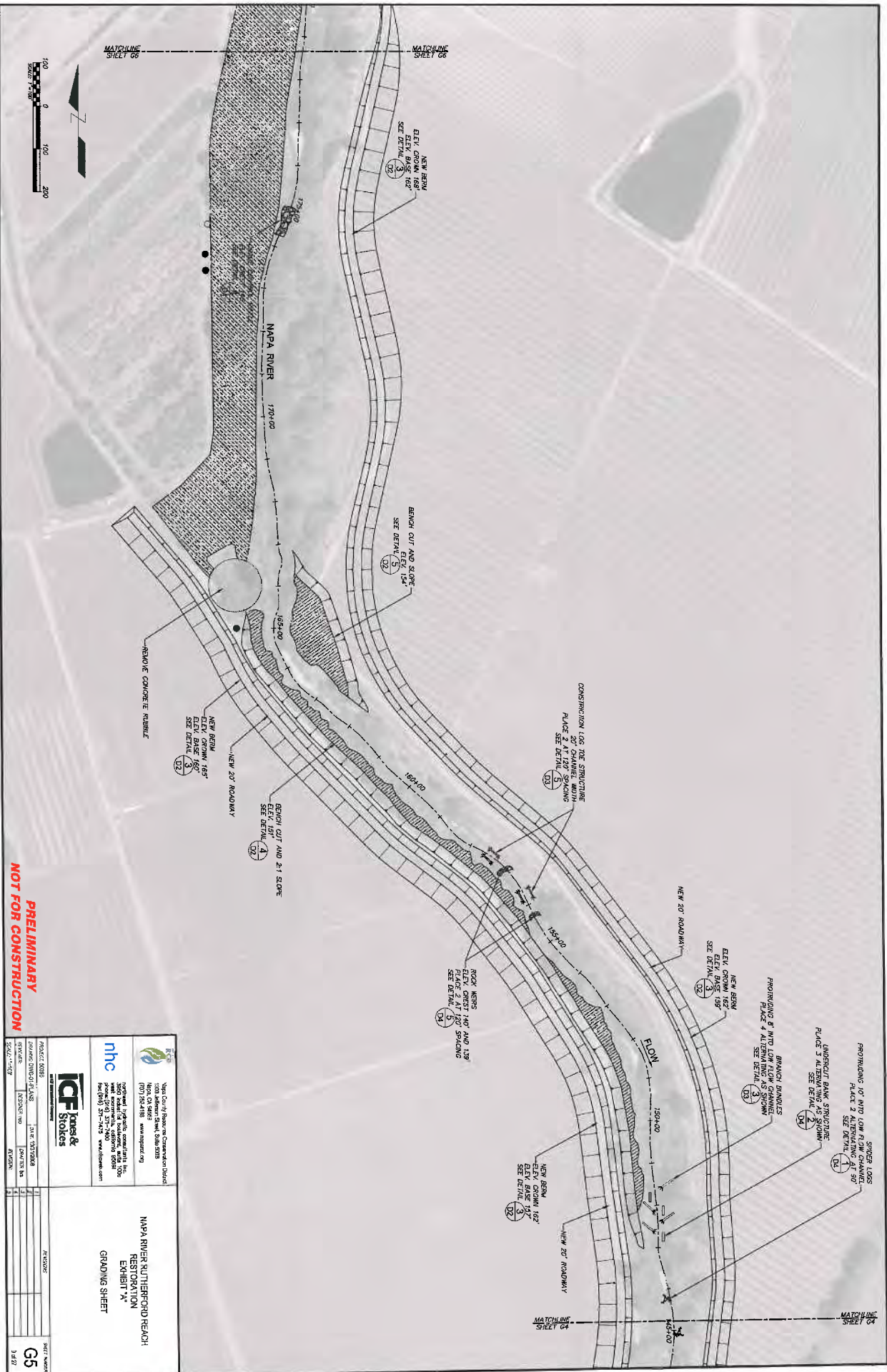




PRELIMINARY
NOT FOR CONSTRUCTION

nbc North County Behavioral Community Health 1000 Jefferson Street, Suite 500 Yuba, CA 95905 (916) 483-4300 www.nbcchc.com		ICF Jacobs & Stokes www.nbcchc.com www.icf-j.com www.stokes.com 916-483-4300 www.nbcchc.com	
PROJECT NO.	DATE	BY	CHECKED
DRINKING WATER PLANT	10/10/2018	SM/STW	SM/STW
PROJECT NAME	SCALE	SHEET NUMBER	
BALE SLOUGH	1"=10'	G4	
8/27			

NAPA RIVER RUTHERFORD BEACH RESTORATION EXHIBIT 'A'
GRADING SHEET



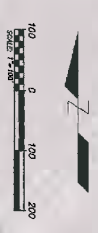
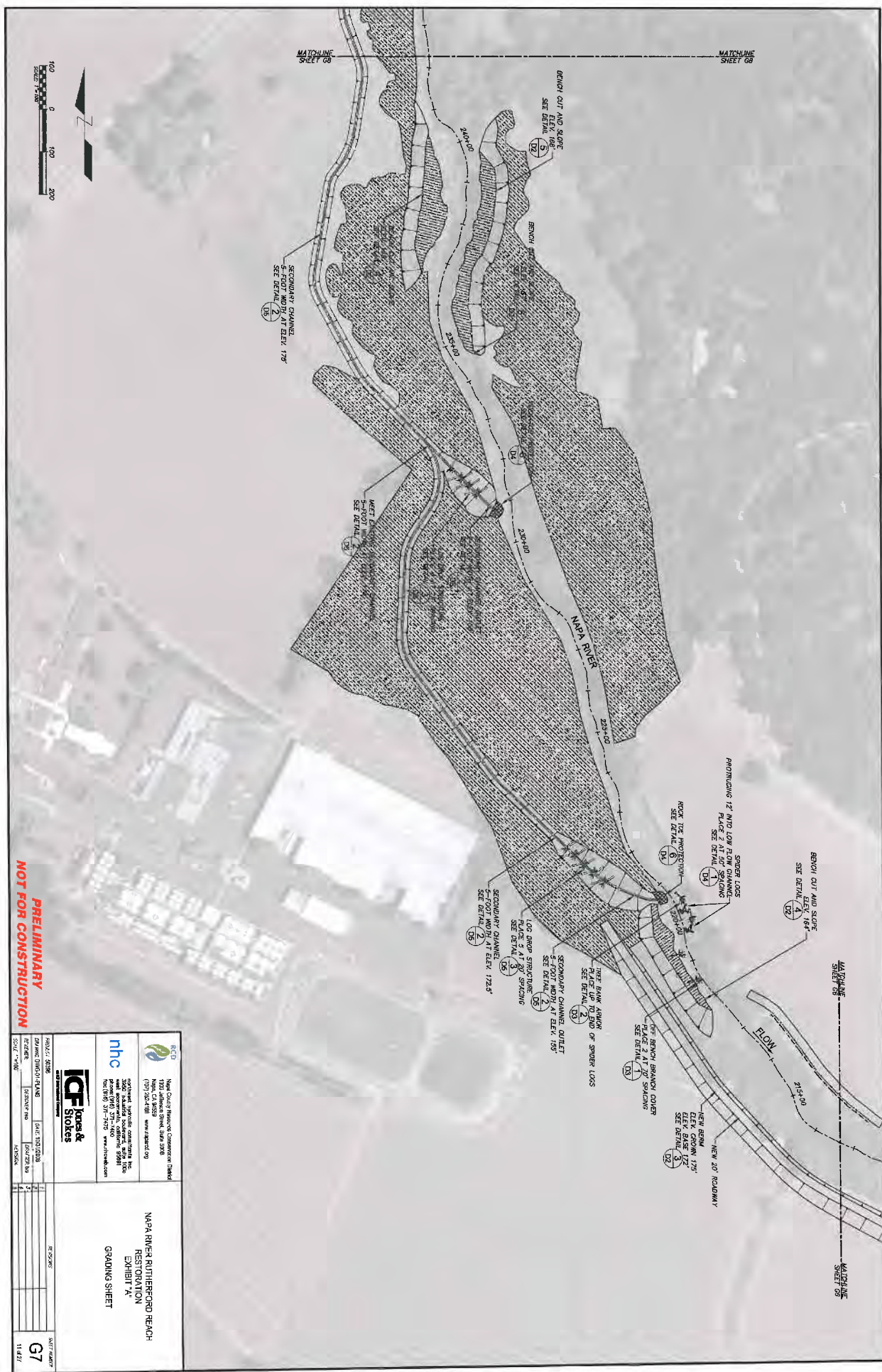
**PRELIMINARY
NOT FOR CONSTRUCTION**

Napa County Planning and Community Development 1000 Lakeside Drive, Suite 200B Napa, CA 94930 (707) 251-1919 www.napacounty.org		1000 Lakeside Drive, Suite 200B Napa, CA 94930 (707) 251-1919 www.napacounty.org	
PROJECT NO. 15-0000000 PROJECT NAME: NAPA RIVER RUTHERFORD REACH RESTORATION EXHIBIT 'A' SHEET NO. 3427		PROJECT NO. 15-0000000 PROJECT NAME: NAPA RIVER RUTHERFORD REACH RESTORATION EXHIBIT 'A' SHEET NO. 3427	
DATE: 08/20/2015 DRAWN BY: [Name] CHECKED BY: [Name]		DATE: 08/20/2015 DRAWN BY: [Name] CHECKED BY: [Name]	
PROJECT NO. 15-0000000 PROJECT NAME: NAPA RIVER RUTHERFORD REACH RESTORATION EXHIBIT 'A' SHEET NO. 3427		PROJECT NO. 15-0000000 PROJECT NAME: NAPA RIVER RUTHERFORD REACH RESTORATION EXHIBIT 'A' SHEET NO. 3427	



**PRELIMINARY
NOT FOR CONSTRUCTION**

 Napa County Resource Conservation District 1400 Lakeside Drive, Suite 200B Napa, CA 94950 (707) 251-2121 Fax: 707-251-2122		 ICF Stokes 3000 West Highway, Suite 100 San Francisco, CA 94115 Tel: (415) 778-7475 Fax: (415) 778-7476	
PROJECT NUMBER	DATE	BY	CHECKED
PROJECT DIVISION	DATE	BY	CHECKED
REVISION	DATE	BY	CHECKED
NAPA RIVER RUTHERFORD REACH RESTORATION EXHIBIT 'A' GRADING SHEET		SHEET NUMBER G6 9/2/27	



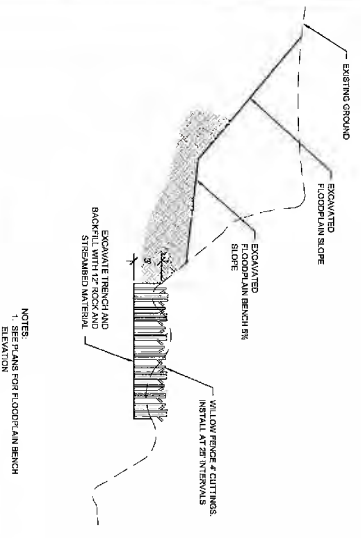
**PRELIMINARY
NOT FOR CONSTRUCTION**

<p>Client: Napa County Regional Commission, District 1 1200 Jefferson Street, Ste. 202B Napa, CA 94959 (707) 253-4599, www.napacounty.org</p>			
<p>Contractor: NHC 3800 Sunset Boulevard, Suite 100 Emeryville, CA 94608 (415) 435-3800, www.nhc.com</p>			
<p>Architect: ICF Jones & Stokes 1000 Redwood Drive Berkeley, CA 94702 (415) 524-4200, www.icfjones.com</p>			
<p>Project: NAPA RIVER RUTHERFORD REACH RESTORATION EXHIBIT 'A' GRADING SHEET</p>			
<p>Scale: 1"=100'</p>		<p>Sheet: 67 of 114</p>	

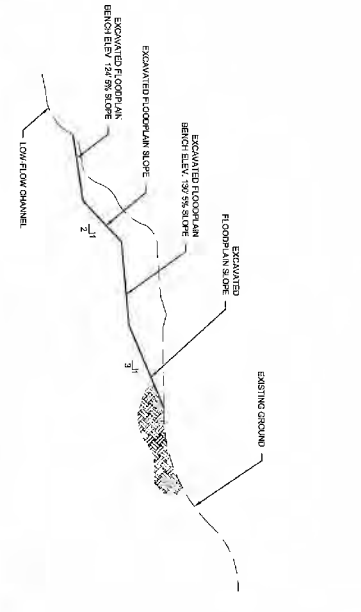


**PRELIMINARY
NOT FOR CONSTRUCTION**

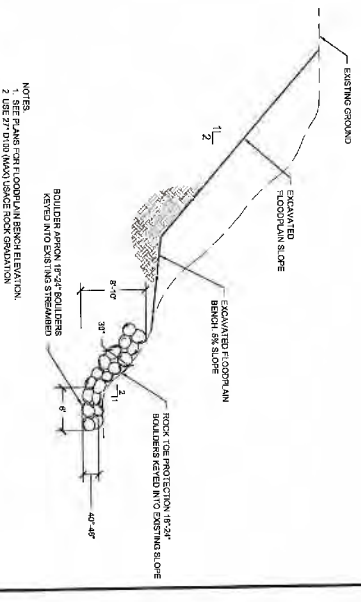
		1000 South Bayview, Carpinteria, CA 93014 NAPA, CA 94959 (707) 226-4100 www.kandd.com	
		National Hydraulic Engineering Inc. 1000 South Bayview, Carpinteria, CA 93014 NAPA, CA 94959 (707) 226-4100 www.nhc.com	
		ICF Jones & Stokes 1000 South Bayview, Carpinteria, CA 93014 NAPA, CA 94959 (707) 226-4100 www.icfjones.com	
PROJECT NO.	DATE	REVISION	SCALE
0000000000	00/00/00		
NAPA RIVER RUTHERFORD REACH RESTORATION EXHIBIT "A" GRADING SHEET		SHEET NUMBER G8 OF 87	



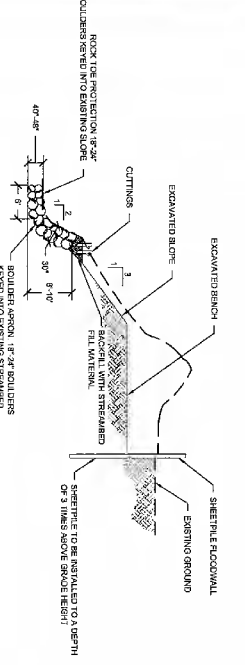
1 BANK STABILIZATION STATION 52+00 (APPROX)
 D1 HORIZONTAL SCALE: 1"=20'
 VERTICAL SCALE: 1"=10'



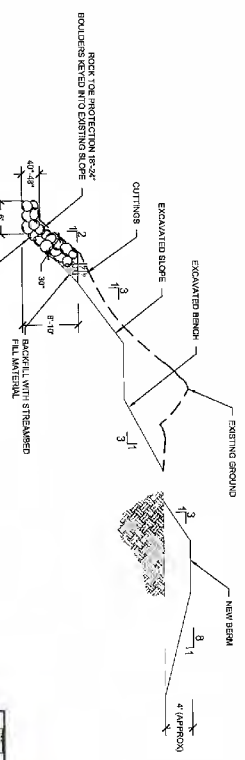
2 FLOODPLAIN BENCH SLOPE CUT STATION 61+00 (APPROX)
 D1 HORIZONTAL SCALE: 1"=20'
 VERTICAL SCALE: 1"=10'



3 BANK STABILIZATION STATION 82+00 (APPROX)
 D1 HORIZONTAL SCALE: 1"=20'
 VERTICAL SCALE: 1"=10'



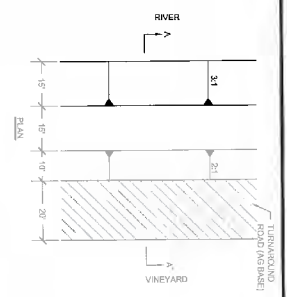
4 BANK STABILIZATION STATION 125+00 (APPROX)
 D1 HORIZONTAL SCALE: 1"=20'
 VERTICAL SCALE: 1"=10'



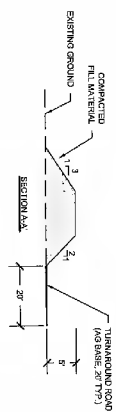
5 BANK STABILIZATION STATION 127+00 (APPROX)
 D1 HORIZONTAL SCALE: 1"=20'
 VERTICAL SCALE: 1"=10'

PRELIMINARY
NOT FOR CONSTRUCTION

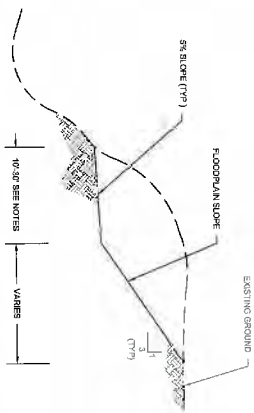
		Napa County Regional Transportation District 1386 Jefferson Street, Suite 500B Napa, CA 94559 (707) 252-4188 www.nchd.org	
		Napa River Rutherford Reach RESTORATION DETAIL SHEET	
		ICF Jones & Stokes 3801 West Lincoln Road, Suite 200 Napa, CA 94558 Tel: (707) 251-7175 www.icfjstokes.com	
PROJECT NO: 2017-001 DRAWING NO: 125-001 SCALE: AS SHOWN	DATE: 10/18/18 DRAWN BY: JLR CHECKED BY: JLR APPROVED BY: JLR	SHEET NO: 14.27 TOTAL SHEETS: 14.27	DATE: 10/18/18



NOTES:
 1. BERM HEIGHT VARIES SEE PLAN
 2. BERM FOOTPRINT VARIES BASED ON BERM HEIGHT
 SEE PLAN

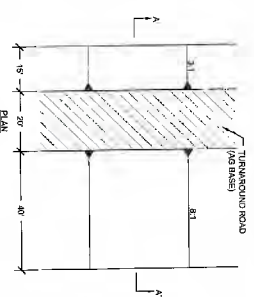


2 STANDARD BERM
 D2 HORIZONTAL SCALE: 1"=20'
 VERTICAL SCALE: 1"=10'

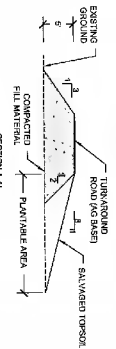


NOTES:
 1. BENCH WIDTH AND ELEVATION VARY SEE PLAN

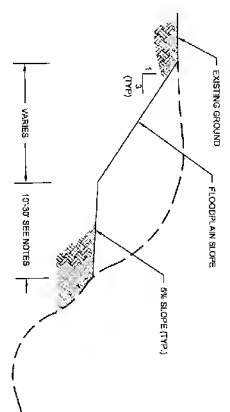
4 RIGHT BANK FLOODPLAIN BENCH SLOPE CUT
 D2 HORIZONTAL SCALE: 1"=20'
 VERTICAL SCALE: 1"=10'



NOTES:
 1. BERM HEIGHT VARIES SEE PLAN
 2. BERM FOOTPRINT VARIES BASED ON BERM HEIGHT
 SEE PLAN



3 ROLLING BERM
 D2 HORIZONTAL SCALE: 1"=20'
 VERTICAL SCALE: 1"=10'

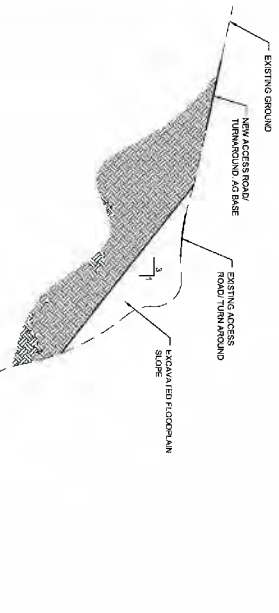


NOTES:
 1. BENCH WIDTH AND ELEVATION VARY SEE PLAN

5 LEFT BANK FLOODPLAIN BENCH SLOPE CUT
 D2 HORIZONTAL SCALE: 1"=20'
 VERTICAL SCALE: 1"=10'

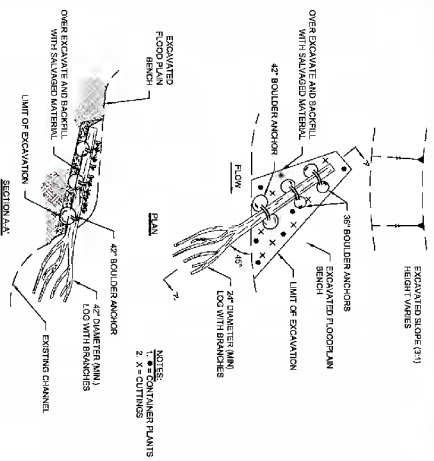
1 BANK STABILIZATION STATION 193+00 - 186+00 (APPROX)
 D2 HORIZONTAL SCALE: 1"=20'
 VERTICAL SCALE: 1"=10'

NOTES:
 1. SEE PLAN FOR BENCH ELEVATION
 2. USE 27" DIA. (MAX) USDOE ROCK GRADATION

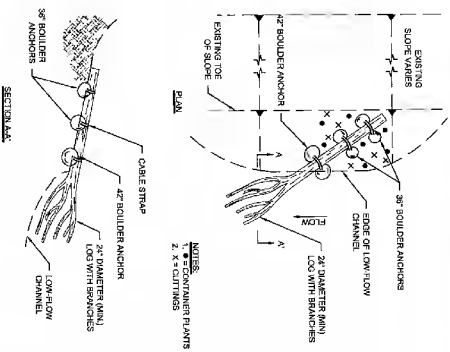


PRELIMINARY
NOT FOR CONSTRUCTION

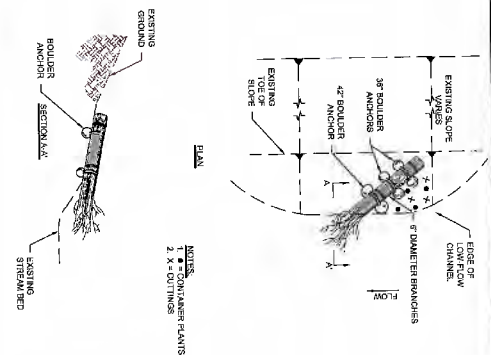
PROJECT: 50295	DATE: 03/11/18	SCALE: AS SHOWN	SHEET NUMBER: D2
DRAWN BY: [REDACTED]	CHECKED BY: [REDACTED]	DATE: 03/11/18	DATE: 14/27
National Highway Construction District 1203 Jefferson Street, Suite 500B (770) 524-4188 www.nhcd.org		NAPA RIVER RUTHERFORD REACH RESTORATION DETAIL SHEET	
5000 Westfield Road, Suite 100 Napa, CA 94558 (707) 251-4200 www.icfjones.com			



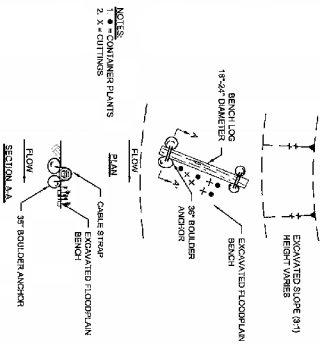
1 OFF BENCH BRANCH COVER
D3 SCALE: 1"=10'



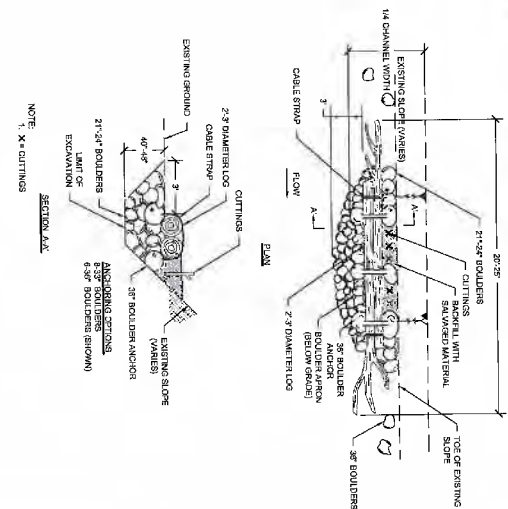
2 OFF TOE BRANCH COVER
D3 SCALE: 1"=10'



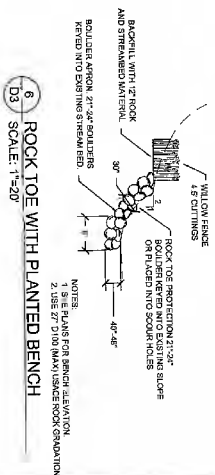
3 BRANCH BUNDLE
D3 SCALE: 1"=10'



4 FLOODPLAIN BENCH LOG COVER
D3 SCALE: 1"=10'



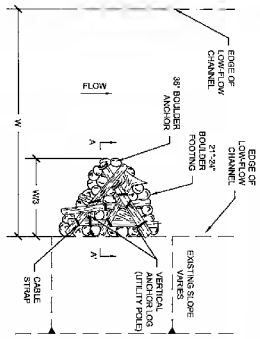
5 LOG TOE STRUCTURE
D3 SCALE: 1"=5'



6 ROCK TOE WITH PLANTED BENCH
D3 SCALE: 1"=20'

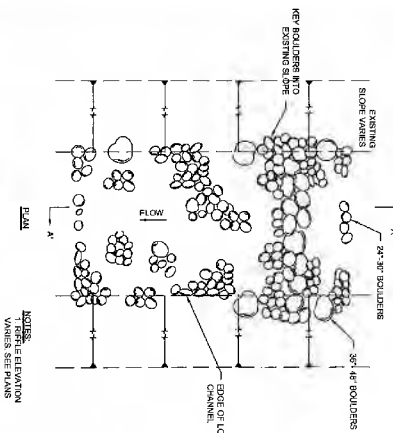
PRELIMINARY
NOT FOR CONSTRUCTION

<p>Napa County Resource Conservation District 1323 McArthur Street, Suite 508 Napa, CA 94951 (707) 252-1188 www.nrcd.org</p>			
<p>NAPA RIVER RUTHERFORD BEACH RESTORATION DETAIL SHEET</p>			
PROJECT: 2036	DATE: 08/18/10	SCALE: 1"=10'	DATE: 08/18/10
DRAWN: D3	DESIGNED: D3	CHECKED: D3	DATE: 08/18/10
SCALE: 1"=10'	SCALE: 1"=10'	SCALE: 1"=10'	SCALE: 1"=10'
<p>15-62202</p>			<p>15-627</p>

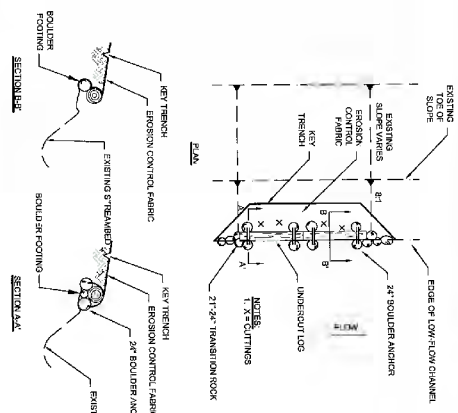


1 SPILER LOG STRUCTURE
D4 SCALE: 1"=10'

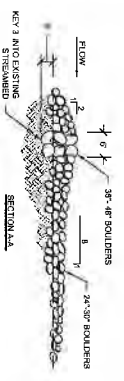
- NOTES:
 1. USE 1" 2.5 QUARTER LOGS
 2. USE 4" 1 LOGS PER STRUCTURE
 3. ANCHOR STRUCTURE USING 4" 3/8 BOLTERS PER LOG
 4. A MINIMUM OF TWO VERTICAL ANCHOR LOGS (DILITY PILED) PER STRUCTURE
 5. ALL ANCHOR LOGS SHALL BE PLACED INTO PRE-EXISTED HOLES AND CEASED TO STRUCTURE AT A MINIMUM OF TWO LOCATIONS



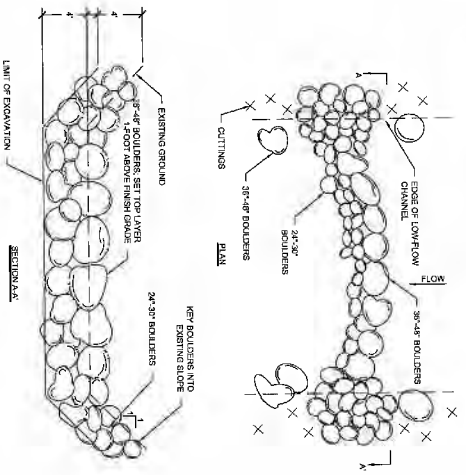
2 UNDERCUT BANK STRUCTURE
D4 SCALE: 1"=10'



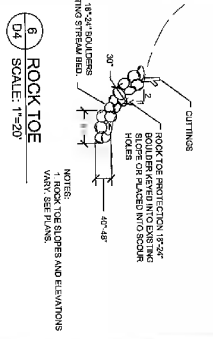
3 ROOTWAD SPURS
D4 SCALE: 1"=10'



4 GRADE CONTROL RIFFLE
D4 SCALE: 1"=10'



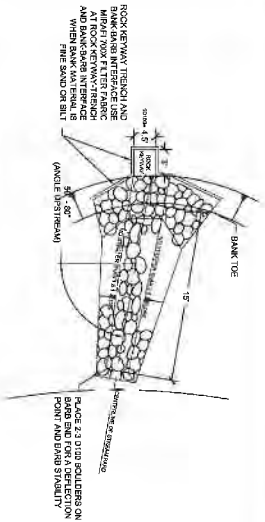
5 ROCK WEIR
D4 SCALE: 1"=5'



6 ROCK TOE
D4 SCALE: 1"=20'

PRELIMINARY
NOT FOR CONSTRUCTION

		Niles County Resource Conservation District 1203 Jefferson Street, Suite 303 Reno, NV 89503 (775) 784-4188 www.nrcd.org	
		3601 West Platte Valley, Suite 200 Reno, NV 89502 (775) 784-9888 www.icfjones.com	
NAPA RIVER RUTHERFORD REACH RESTORATION DETAIL SHEET		17-02020	10/17/2017 D4
PROJECT 5238 DRAWING NO. 17-02020 DATE 10/17/17	17-02020 17-02020	17-02020 17-02020	17-02020 17-02020

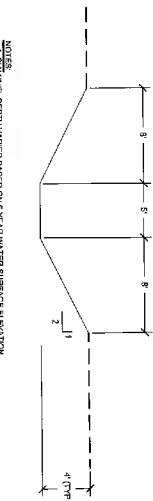


12 TON ROCK RIPRAP AS SHOWN OR AS REQUIRED BY THE ENGINEER

12 TON ROCK GRADATION (2.5 SPT)

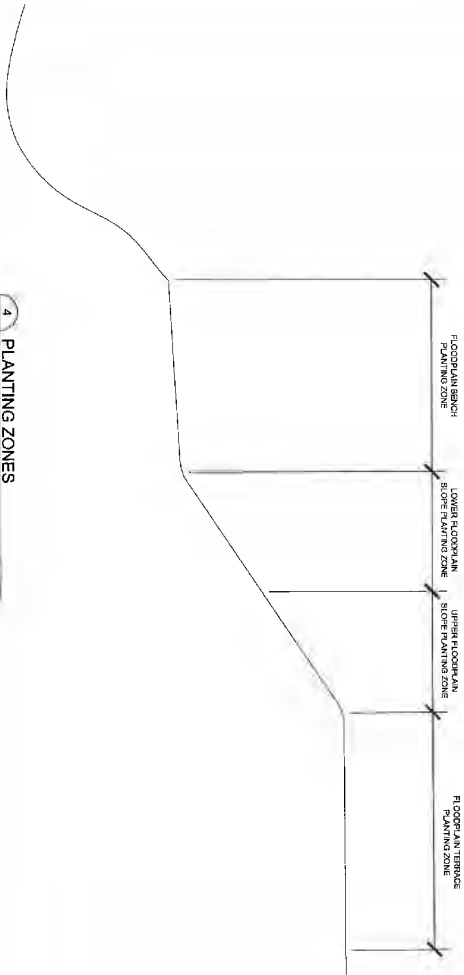
GRAIN SIZE	PERCENT PASSING
NO. 10	5
NO. 20	15
NO. 30	25
NO. 40	35
NO. 60	55
NO. 100	75
NO. 200	85

1 STREAM BARB
D5 SCALE: 1"=15'

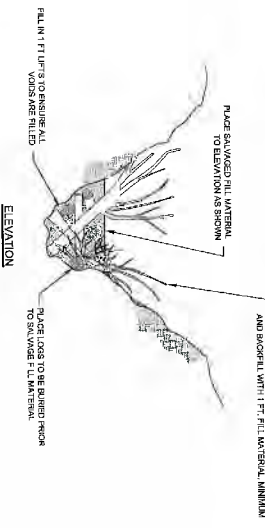


NOTES:
1 CHANNEL DEPTH VARIES BASED ON 5-YEAR WATER SURFACE ELEVATION
2 CHANNEL INVERT ELEVATION VARIES, SEE PLAN.

2 SECONDARY CHANNEL
D5 SCALE: 1"=5'



4 PLANTING ZONES
D5 SCALE: 1"=20'



12 TON ROCK RIPRAP AS SHOWN OR AS REQUIRED BY THE ENGINEER

12 TON ROCK GRADATION (2.5 SPT)

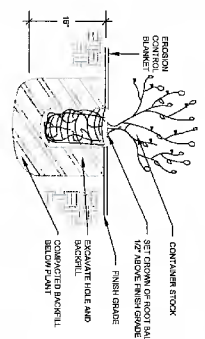
GRAIN SIZE	PERCENT PASSING
NO. 10	5
NO. 20	15
NO. 30	25
NO. 40	35
NO. 60	55
NO. 100	75
NO. 200	85

3 LOG GRADE CONTROL STRUCTURE
D5 SCALE: 1"=5'

- NOTES:
1. ALL LOGS ARE 10' X 2' LONG.
 2. LARGER WOODY MATERIAL WILL NOT BE ACCEPTED.
 3. LOGS SHALL BE PLACED WITH THE LOGS AND NEVER IN AGAINST THE EXISTING CHANNEL.
 4. SLOPE LOGS SHALL BE INTERLOCKED WITH FOOTER LOGS AND NEVER IN AGAINST THE EXISTING CHANNEL.
 5. BANK TIE LOGS SHOULD BE SET IN THE SLOPE LOGS AND 7" MIN. OVER THE MINIMUM GRADE.
 6. TIE LOGS SHALL BE PLACED UPSTREAM OF SILL LOG AND WEDGED IN PLACE TO PROVIDE SILL LOG SUPPORT.
 7. ALL LOGS MUST HAVE ROOT BALLS IN PLACE.

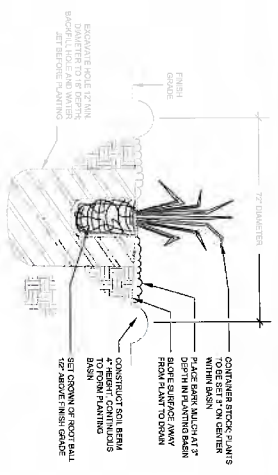
**PRELIMINARY
NOT FOR CONSTRUCTION**

		North Carolina Department of Transportation 1403 William Street, Suite 5009 Raleigh, NC 27601 (919) 286-4188 www.ncdot.gov	
		HNC 3500 Hatteras Boulevard, Suite 1100 Raleigh, NC 27601 (919) 271-7400 www.hnc.com	
		ICF Jones & Stokes 3500 Hatteras Boulevard, Suite 1100 Raleigh, NC 27601 (919) 271-7400 www.icfjones.com	
PROJECT CODE	DATE	PROJECT NAME	PROJECT NUMBER
09/16/05	12/27/05	09/16/05	09/16/05
DESIGNED BY	CHECKED BY	DATE	SCALE
NAPA RIVER RUTHERFORD REACH RESTORATION DETAIL SHEET		SHEET NUMBER D5 TOTAL SHEETS 1-4/27	



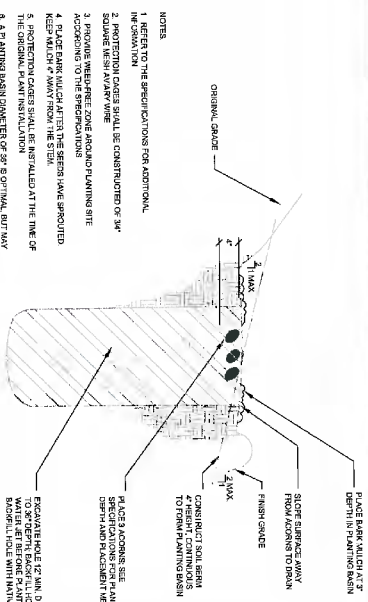
NOTES
1. REFER TO THE SPECIFICATIONS FOR ADDITIONAL INFORMATION.

1 CONTAINER PLANTING - EROSION CONTROL BLANKET
D6 / NOT TO SCALE



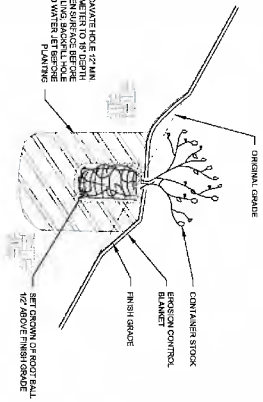
NOTES
1. REFER TO THE SPECIFICATIONS FOR ADDITIONAL INFORMATION.
2. PROVIDE WEED-FREE ZONE AROUND PLANTING BERMS ACCORDING TO THE SPECIFICATIONS.
3. REFER TO **D6** FOR CONTAINER PLANTING CLUSTER LAYOUT.

2 CONTAINER PLANTING
D6 / NOT TO SCALE



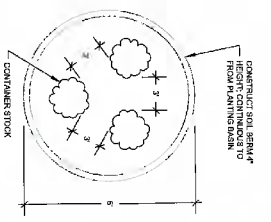
NOTES
1. REFER TO THE SPECIFICATIONS FOR ADDITIONAL INFORMATION.
2. PROTECTIVE COVERS SHALL BE CONTINGED FOR 30\"/>

3 ACORN PLANTING
D6 / NOT TO SCALE



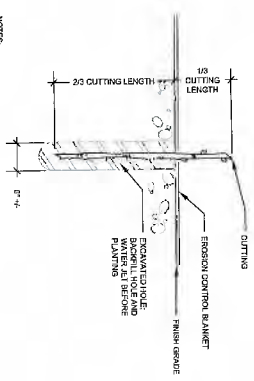
NOTES
1. REFER TO THE SPECIFICATIONS FOR ADDITIONAL INFORMATION.
2. PROVIDE WEED-FREE ZONE AROUND PLANTING SITE ACCORDING TO THE SPECIFICATIONS.
3. REFER TO THE SPECIFICATIONS FOR ADDITIONAL INFORMATION ON PLANTING THROUGH THE EROSION CONTROL BLANKET.

4 CONTAINER PLANTING (SLOPES GREATER THAN OR EQUAL TO 3:1)
D6 / NOT TO SCALE



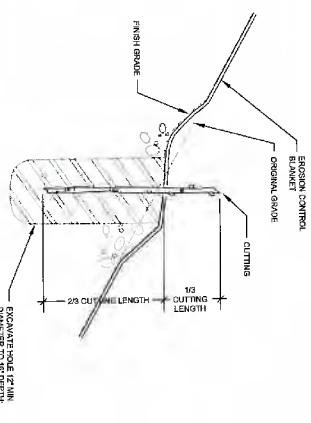
NOTES
1. REFER TO THE SPECIFICATIONS FOR ADDITIONAL INFORMATION.
2. PROVIDE WEED-FREE ZONE AROUND PLANTING BERMS ACCORDING TO THE SPECIFICATIONS.
3. PLANT QUANTITIES AND SPACING VARIIES BY SPECIES. REFER TO SCHEDULE FOR SPACING REQUIREMENTS.

5 CONTAINER PLANTING CLUSTERS
D6 / NOT TO SCALE



NOTES
1. REFER TO THE SPECIFICATIONS FOR ADDITIONAL INFORMATION.
2. PROVIDE WEED-FREE ZONE AROUND PLANTING SITE ACCORDING TO THE SPECIFICATIONS.
3. REFER TO THE SPECIFICATIONS FOR ADDITIONAL INFORMATION ON PLANTING THROUGH THE EROSION CONTROL BLANKET.

6 CUTTING PLANTING (FLAT SURFACES)
D6 / NOT TO SCALE



NOTES
1. REFER TO THE SPECIFICATIONS FOR ADDITIONAL INFORMATION.
2. PROVIDE WEED-FREE ZONE AROUND PLANTING SITE ACCORDING TO THE SPECIFICATIONS.
3. REFER TO THE SPECIFICATIONS FOR ADDITIONAL INFORMATION ON PLANTING THROUGH THE EROSION CONTROL BLANKET.

7 CUTTING PLANTING (SLOPED SURFACES)
D6 / NOT TO SCALE

**PRELIMINARY
NOT FOR CONSTRUCTION**

New Castle Fisheries Conservation District 1933 Delaware Street, Suite 520B Newark, Delaware 19711-2418 www.nccfd.org		3050 West 104th Street, Suite 120 Overland Park, KS 66204 Tel: (913) 371-7410 www.ICF.com	
NAPA RIVER RUTHERFORD REACH RESTORATION		DETAIL SHEET EXHIBIT A	
480x607 5/20/26 481x607 D48 481x608 481x609 481x610 481x611 481x612 481x613 481x614 481x615 481x616 481x617 481x618 481x619 481x620 481x621 481x622 481x623 481x624 481x625 481x626 481x627 481x628 481x629 481x630 481x631 481x632 481x633 481x634 481x635 481x636 481x637 481x638 481x639 481x640 481x641 481x642 481x643 481x644 481x645 481x646 481x647 481x648 481x649 481x650 481x651 481x652 481x653 481x654 481x655 481x656 481x657 481x658 481x659 481x660 481x661 481x662 481x663 481x664 481x665 481x666 481x667 481x668 481x669 481x670 481x671 481x672 481x673 481x674 481x675 481x676 481x677 481x678 481x679 481x680 481x681 481x682 481x683 481x684 481x685 481x686 481x687 481x688 481x689 481x690 481x691 481x692 481x693 481x694 481x695 481x696 481x697 481x698 481x699 481x700 481x701 481x702 481x703 481x704 481x705 481x706 481x707 481x708 481x709 481x710 481x711 481x712 481x713 481x714 481x715 481x716 481x717 481x718 481x719 481x720 481x721 481x722 481x723 481x724 481x725 481x726 481x727 481x728 481x729 481x730 481x731 481x732 481x733 481x734 481x735 481x736 481x737 481x738 481x739 481x740 481x741 481x742 481x743 481x744 481x745 481x746 481x747 481x748 481x749 481x750 481x751 481x752 481x753 481x754 481x755 481x756 481x757 481x758 481x759 481x760 481x761 481x762 481x763 481x764 481x765 481x766 481x767 481x768 481x769 481x770 481x771 481x772 481x773 481x774 481x775 481x776 481x777 481x778 481x779 481x780 481x781 481x782 481x783 481x784 481x785 481x786 481x787 481x788 481x789 481x790 481x791 481x792 481x793 481x794 481x795 481x796 481x797 481x798 481x799 481x800 481x801 481x802 481x803 481x804 481x805 481x806 481x807 481x808 481x809 481x810 481x811 481x812 481x813 481x814 481x815 481x816 481x817 481x818 481x819 481x820 481x821 481x822 481x823 481x824 481x825 481x826 481x827 481x828 481x829 481x830 481x831 481x832 481x833 481x834 481x835 481x836 481x837 481x838 481x839 481x840 481x841 481x842 481x843 481x844 481x845 481x846 481x847 481x848 481x849 481x850 481x851 481x852 481x853 481x854 481x855 481x856 481x857 481x858 481x859 481x860 481x861 481x862 481x863 481x864 481x865 481x866 481x867 481x868 481x869 481x870 481x871 481x872 481x873 481x874 481x875 481x876 481x877 481x878 481x879 481x880 481x881 481x882 481x883 481x884 481x885 481x886 481x887 481x888 481x889 481x890 481x891 481x892 481x893 481x894 481x895 481x896 481x897 481x898 481x899 481x900 481x901 481x902 481x903 481x904 481x905 481x906 481x907 481x908 481x909 481x910 481x911 481x912 481x913 481x914 481x915 481x916 481x917 481x918 481x919 481x920 481x921 481x922 481x923 481x924 481x925 481x926 481x927 481x928 481x929 481x930 481x931 481x932 481x933 481x934 481x935 481x936 481x937 481x938 481x939 481x940 481x941 481x942 481x943 481x944 481x945 481x946 481x947 481x948 481x949 481x950 481x951 481x952 481x953 481x954 481x955 481x956 481x957 481x958 481x959 481x960 481x961 481x962 481x963 481x964 481x965 481x966 481x967 481x968 481x969 481x970 481x971 481x972 481x973 481x974 481x975 481x976 481x977 481x978 481x979 481x980 481x981 481x982 481x983 481x984 481x985 481x986 481x987 481x988 481x989 481x990 481x991 481x992 481x993 481x994 481x995 481x996 481x997 481x998 481x999 481x1000	5/17/2026 D6 18.27		

Planting Zone	Botanical Name	Common Name	Average Zone Plant Spacing	Container Plants Size	Propagule Type		
					Quantity	Pole Cutting Quantity	Large Seed Quantity
Floodplain Slope	<i>Alnus rhombifolia</i>	White alder	4'	TREEPOT 4	132	288	
	<i>Salix lasiolepis</i>	Red willow	4'	TREEPOT 4	288	192	
	<i>Salix lasiolepis</i>	Yellow willow	4'	TREEPOT 4	288	192	
	<i>Salix lasiolepis</i>	White alder	4'	TREEPOT 4	288	192	
	<i>Alnus rhombifolia</i>	Santa Barbara sedge	Planting in Clusters of 3, Plant Spacing: 3'	DEEPOT 4	688		
	<i>Cornus alberta</i>	Brown dogwood	12'	1-GALLON	288		
	<i>Fraxinus latifolia</i>	Oregon Ash	12'	TREEPOT 4	288		
	<i>Leymus villosoides</i>	Creeping wildrye	Planting in Clusters of 6, Plant Spacing: 3'	1-GALLON	911		
	<i>Pinus ponderosa</i>	Franklin cottonwood	12'	1-GALLON	790		
	<i>Salix lasiolepis</i>	Red willow	6'	1-GALLON	138		
Lower Floodplain Slope	<i>Salix lasiolepis</i>	Arroyo willow	Planting in Clusters of 3, Plant Spacing: 3'	1-GALLON	138		
	<i>Arctostaphylos californica</i>	Pinecone	Planting in Clusters of 3, Plant Spacing: 3'	1-GALLON	138		
	<i>Carex barbara</i>	Santa Barbara sedge	Planting in Clusters of 3, Plant Spacing: 3'	DEEPOT 4	188		
	<i>Cornus alberta</i>	Brown dogwood	12'	1-GALLON	648		
	<i>Fraxinus latifolia</i>	Oregon Ash	12'	TREEPOT 4	648		
	<i>Hordium brachyantherum</i>	Meadow bary	Planting in Clusters of 6, Plant Spacing: 3'	DEEPOT 4	210		
	<i>Leymus villosoides</i>	Creeping wildrye	Planting in Clusters of 6, Plant Spacing: 3'	1-GALLON	288		
	<i>Parthenocissus vitacea</i>	Fronton's cottonwood	12'	1-GALLON	648		
	<i>Rosa californica</i>	California wild rose	Planting in Clusters of 3, Plant Spacing: 3'	DEEPOT 4	171		
	<i>Salix lasiolepis</i>	Red willow	12'	1-GALLON	434		
Upper Floodplain Slope	<i>Symphoricarpos albus</i>	Snowberry	Planting in Clusters of 4, Plant Spacing: 3'	1-GALLON	180		
	<i>Acacia macrocarpa</i>	Big Leaf Acacia	20'	TREEPOT 4	95		
	<i>Asclepias californica</i>	California lily	20'	TREEPOT 4	95		
	<i>Arctostaphylos californica</i>	Pinecone	Planting in Clusters of 3, Plant Spacing: 3'	1-GALLON	60		
	<i>Baccharis pilularis</i>	Coyote brush	Planting in Clusters of 3, Plant Spacing: 3'	TREEPOT 4	55		
	<i>Calyculanthus occidentalis</i>	Western spice bush	Planting in Clusters of 3, Plant Spacing: 3'	1-GALLON	128		
	<i>Carex barbara</i>	Santa Barbara sedge	Planting in Clusters of 3, Plant Spacing: 3'	DEEPOT 4	132		
	<i>Cornus glabrata</i>	Brown dogwood	18'	1-GALLON	85		
	<i>Fraxinus latifolia</i>	Oregon Ash	18'	TREEPOT 4	85		
	<i>Heteromeles arbutifolia</i>	Toyon	Planting in Clusters of 3, Plant Spacing: 3'	TREEPOT 4	57		
Understory	<i>Hordium brachyantherum</i>	Meadow bary	Planting in Clusters of 3, Plant Spacing: 3'	DEEPOT 4	114		
	<i>Leymus villosoides</i>	Creeping wildrye	Planting in Clusters of 3, Plant Spacing: 3'	1-GALLON	48		
	<i>Lonicera hispidula</i>	Honeyuckle	Planting in Clusters of 3, Plant Spacing: 3'	1-GALLON	80		
	<i>Quercus agrifolia</i>	Coast live oak	20'	TREEPOT 4	95		
	<i>Umbellularia californica</i>	California bay	20'	TREEPOT 4	95		
	<i>Asclepias californica</i>	California lily	20'	TREEPOT 4	95		
	<i>Arctostaphylos californica</i>	Pinecone	Planting in Clusters of 3, Plant Spacing: 3'	1-GALLON	747		
	<i>Calyculanthus occidentalis</i>	Western spice bush	Planting in Clusters of 3, Plant Spacing: 3'	1-GALLON	573		
	<i>Carex barbara</i>	Santa Barbara sedge	Planting in Clusters of 3, Plant Spacing: 3'	DEEPOT 4	747		
	<i>Lonicera hispidula</i>	Honeyuckle	Planting in Clusters of 3, Plant Spacing: 3'	1-GALLON	581		
<i>Rosa californica</i>	California wild rose	Planting in Clusters of 3, Plant Spacing: 3'	DEEPOT 4	561			
<i>Symphoricarpos albus</i>	Snowberry	Planting in Clusters of 3, Plant Spacing: 3'	1-GALLON	561			

Planting Zone	Botanical Name	Common Name	Average Zone Plant Spacing	Container Plants Size	Propagule Type		
					Quantity	Pole Cutting Quantity	Large Seed Quantity
Floodplain Terrace	<i>Asclepias californica</i>	California lily	20'	1-GALLON	138		
	<i>Arctostaphylos californica</i>	Pinecone	Planting in Clusters of 3, Plant Spacing: 3'	1-GALLON	132		
	<i>Baccharis pilularis</i>	Coyote brush	Planting in Clusters of 3, Plant Spacing: 3'	TREEPOT 4	132		
	<i>Bonniea caroliniana</i>	California broom	Planting in Clusters of 6, Plant Spacing: 3'	DEEPOT 4	133		
	<i>Calyculanthus occidentalis</i>	Western spice bush	Planting in Clusters of 3, Plant Spacing: 3'	1-GALLON	123		
	<i>Carex barbara</i>	Santa Barbara sedge	Planting in Clusters of 3, Plant Spacing: 3'	DEEPOT 4	175		
	<i>Heteromeles arbutifolia</i>	Toyon	Planting in Clusters of 3, Plant Spacing: 3'	TREEPOT 4	72		
	<i>Hordium brachyantherum</i>	Meadow bary	Planting in Clusters of 6, Plant Spacing: 3'	DEEPOT 4	120		
	<i>Leymus villosoides</i>	Creeping wildrye	Planting in Clusters of 6, Plant Spacing: 3'	1-GALLON	128		
	<i>Lonicera hispidula</i>	Honeyuckle	Planting in Clusters of 3, Plant Spacing: 3'	1-GALLON	142		
Lever	<i>Melicope californica</i>	California melic	Planting in Clusters of 6, Plant Spacing: 3'	DEEPOT 4	156		
	<i>Quercus agrifolia</i>	Coast live oak	20'	TREEPOT 4	234		
	<i>Quercus laevis</i>	Yellow oak	20'	DEEPOT 4	128		
	<i>Rosa californica</i>	California wild rose	Planting in Clusters of 3, Plant Spacing: 3'	DEEPOT 4	135		
	<i>Symphoricarpos albus</i>	Snowberry	Planting in Clusters of 3, Plant Spacing: 3'	1-GALLON	138		
	<i>Umbellularia californica</i>	California bay	20'	TREEPOT 4	234		
	<i>Vulpia microstachys</i>	Small fescue	Planting in Clusters of 6, Plant Spacing: 3'	DEEPOT 4	138		
	<i>Achillea millefolium</i>	Yarrow	Planting in Clusters of 6, Plant Spacing: 3'	1-GALLON	128		
	<i>Baccharis pilularis</i>	Coyote brush	Planting in Clusters of 3, Plant Spacing: 3'	TREEPOT 4	63		
	<i>Heteromeles arbutifolia</i>	Toyon	Planting in Clusters of 3, Plant Spacing: 3'	TREEPOT 4	81		
Notes	<i>Ceanothus thyrsiflorus</i>	Blue thornsumac	Planting in Clusters of 3, Plant Spacing: 3'	1-GALLON	86		
	<i>Leymus villosoides</i>	Creeping wildrye	Planting in Clusters of 6, Plant Spacing: 3'	1-GALLON	138		
	<i>Rhamnus californica</i>	California coffeeberry	Planting in Clusters of 3, Plant Spacing: 3'	TREEPOT 4	69		
	<i>Rosa californica</i>	California wild rose	Planting in Clusters of 3, Plant Spacing: 3'	DEEPOT 4	63		
	<i>Symphoricarpos albus</i>	Snowberry	Planting in Clusters of 4, Plant Spacing: 3'	1-GALLON	89		

- NOTES:
- SEE (1) FOR PLANTING ZONE CROSS SECTION
 - SEE (2) FOR DETAIL REFERENCE

PRELIMINARY
NOT FOR CONSTRUCTION

NCD
Napa County Resource Conservation District
1530 Katherine Street, Suite 3008
Napa, CA 94558
(707)252-4100 www.nrcd.org

ICF Jones & Stokes
200 West Front Street, Suite 100
Napa, CA 94558
(707)252-4100 www.icfjones.com

NAPA RIVER RUTHERFORD REACH RESTORATION

PLANTING PROGRAM

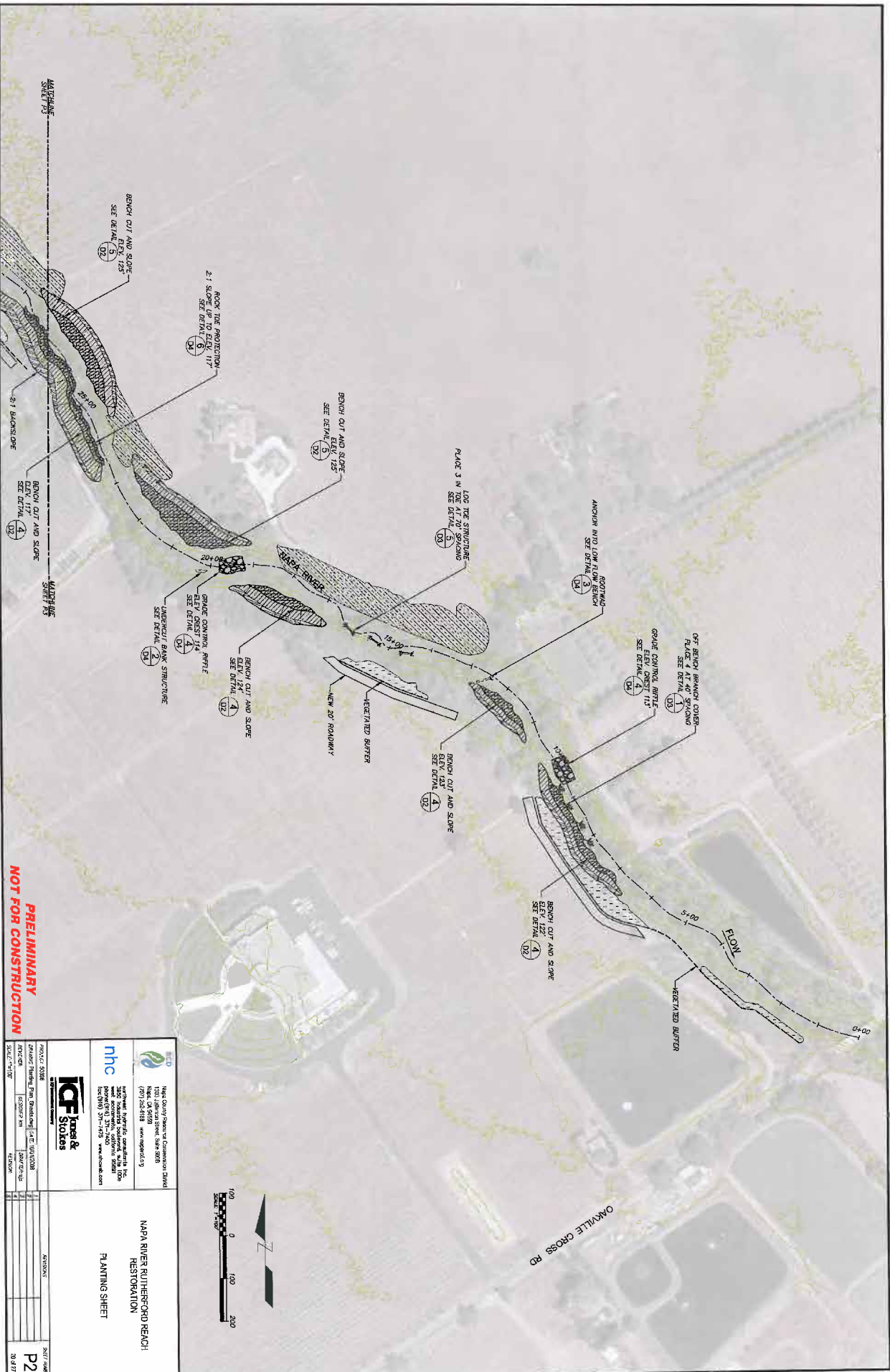
PROJECT NUMBER: 8225255

DATE: 10/20/2010

SCALE: 1"=20'

PROJECT NUMBER: P1

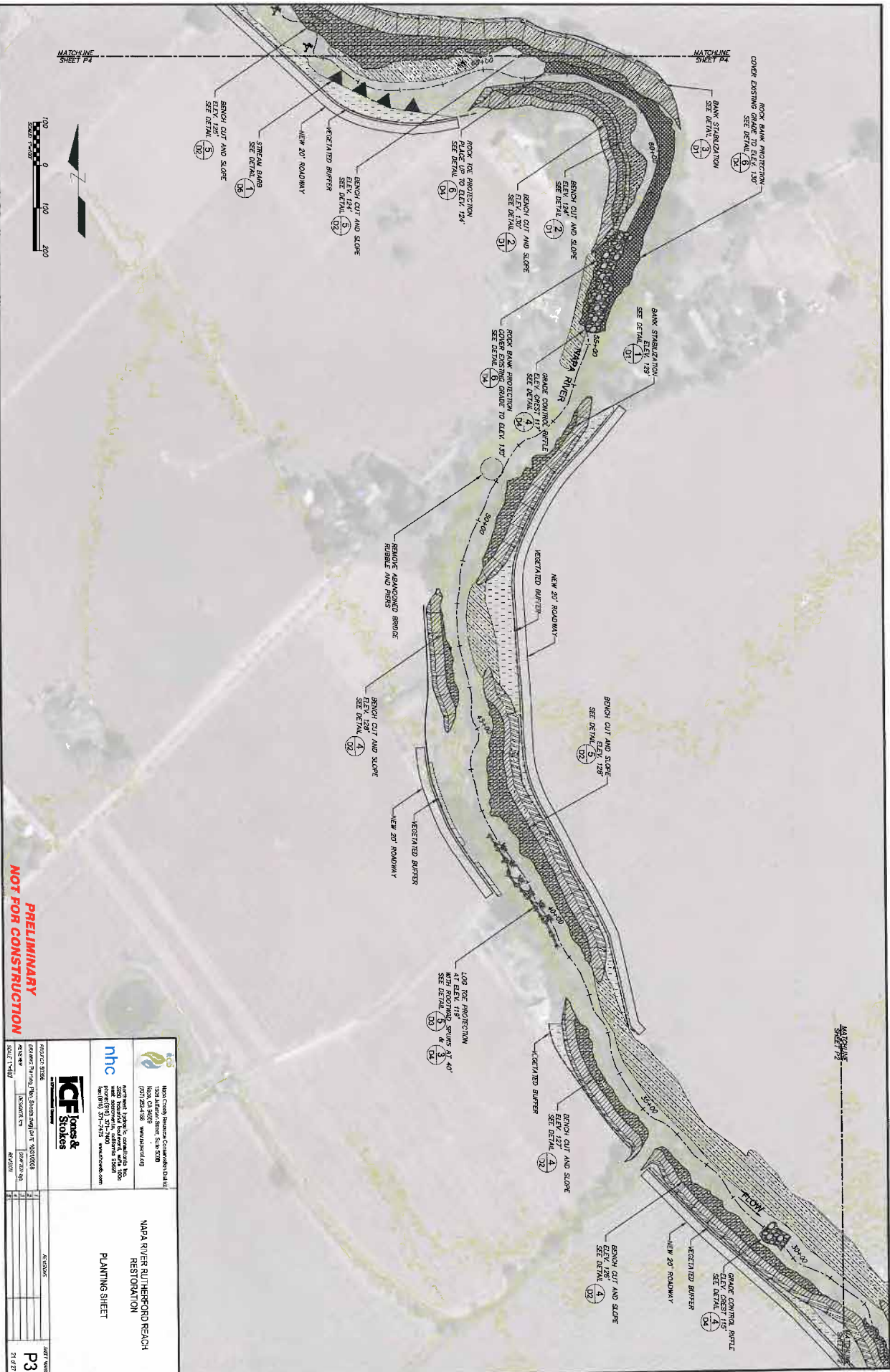
DATE: 10/20/2010



PRELIMINARY
NOT FOR CONSTRUCTION

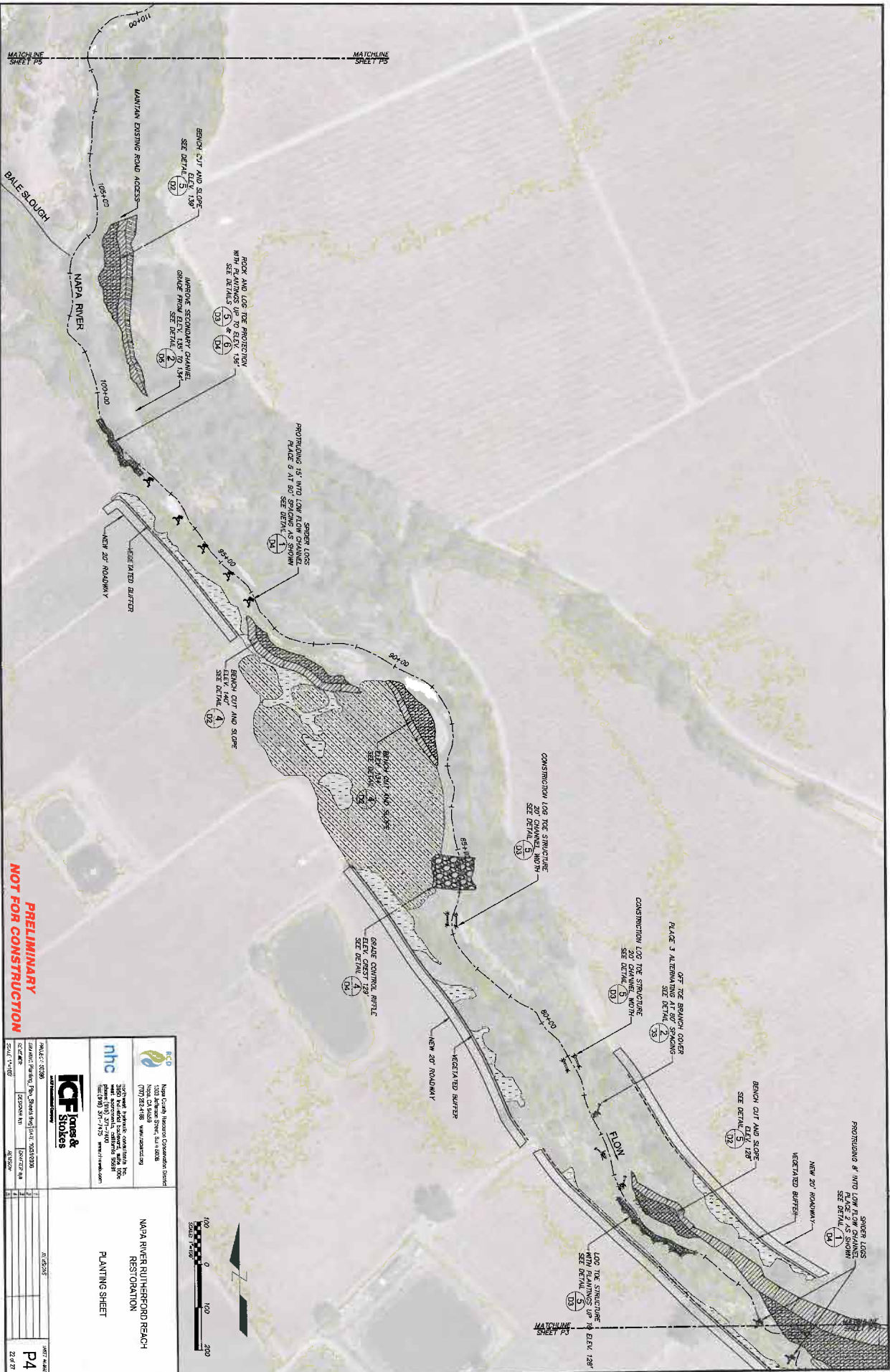
1800 County Road 200, Rutherford, CA 94573 (925) 253-1111 www.nbc.com		1001 Jefferson Street, Suite 300 Napa, CA 94931 (707) 253-1111 www.icfjones.com	
National Water Research Institute 1800 County Road 200, Rutherford, CA 94573 (925) 253-1111 www.nbc.com		National Water Research Institute 1001 Jefferson Street, Suite 300 Napa, CA 94931 (707) 253-1111 www.icfjones.com	
PROJECT NO:	NO. 2008	DATE:	3/27/2008
PROJECT NAME:	Water Treatment Plant Upgrade	SCALE:	P2
PROJECT NO.:	2008-001	DATE:	3/27/08
PROJECT NAME:	Water Treatment Plant Upgrade	SCALE:	P2
PROJECT NO.:	2008-001	DATE:	3/27/08
PROJECT NAME:	Water Treatment Plant Upgrade	SCALE:	P2

NAPA RIVER RUTHERFORD REACH
 RESTORATION
 PLANNING SHEET



**PRELIMINARY
NOT FOR CONSTRUCTION**

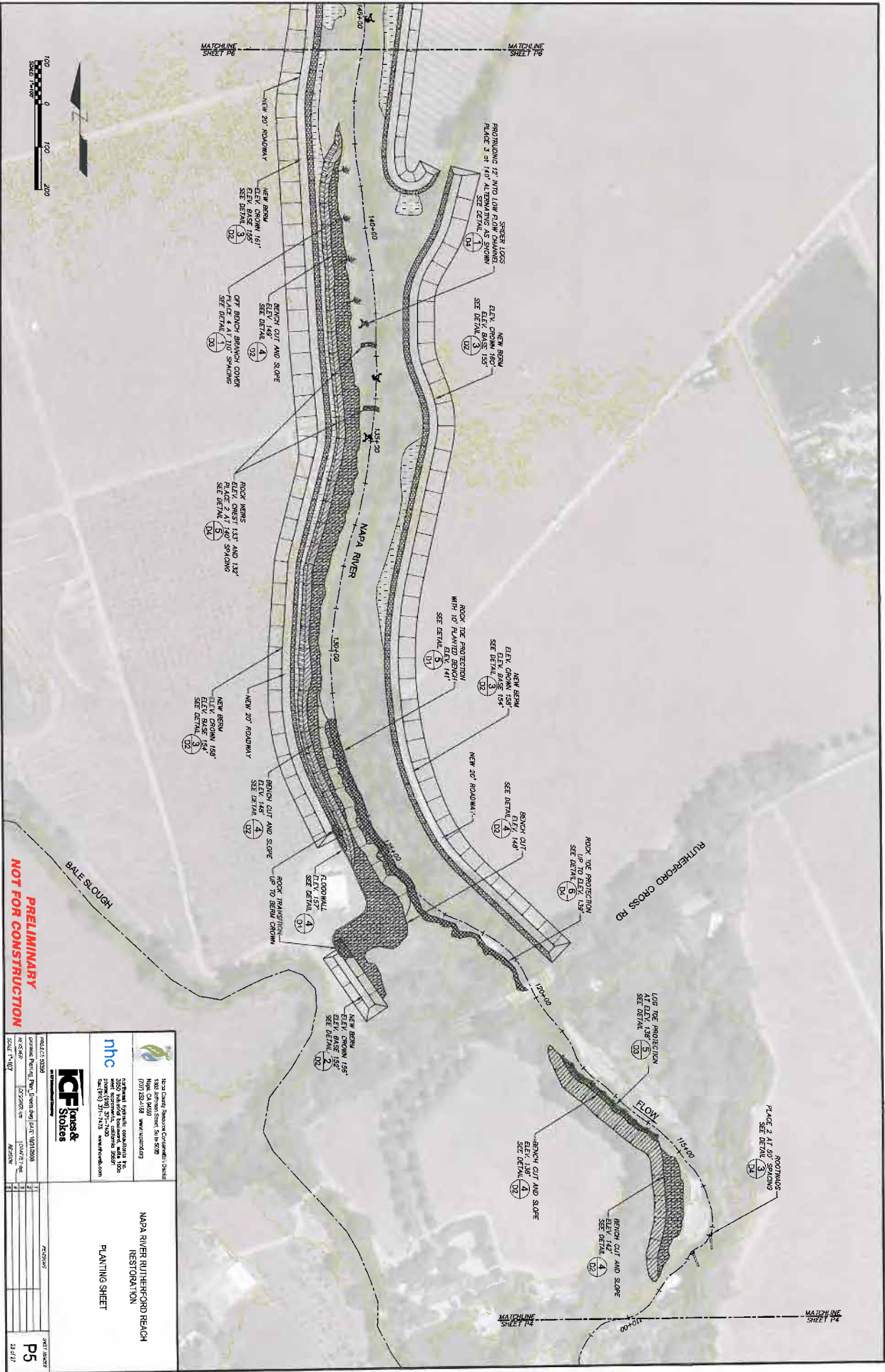
Newbury Group 1000 California Street, Suite 200 San Francisco, CA 94109 (415) 774-1400		ICF Jones & Stokes 1000 California Street, Suite 200 San Francisco, CA 94109 (415) 774-1400	
PROJECT NUMBER: 03-000003 PROJECT NAME: Maja River Rutherford Reach Restoration SCALE: 1"=40'		PROJECT NUMBER: 2027-0003 PROJECT NAME: Maja River Rutherford Reach Restoration SHEET NUMBER: P3 SHEET TOTAL: 21 OF 27	



**PRELIMINARY
NOT FOR CONSTRUCTION**

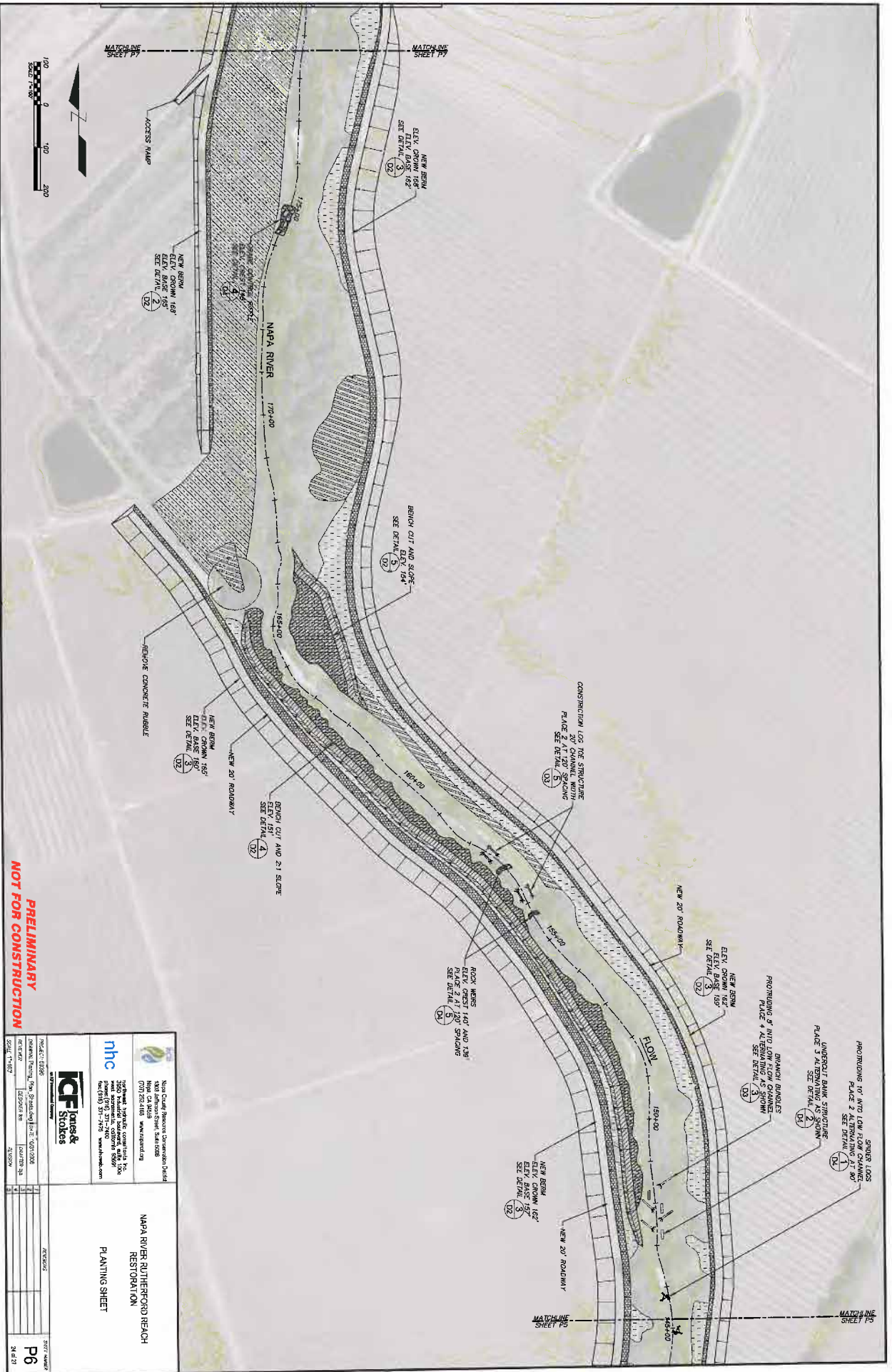
		Napa County Regional Convention Center 1200 Jefferson Street, Suite 600 Napa, CA 94950 (707) 251-9900 www.nhc.org	
		5000 West Industrial Center Drive Suite 200, Colusa, CA 95926 (916) 371-7170 www.icfjones.com	
PROJECT NUMBER: 18-05005 CONTRACT NUMBER: 18000000 DRAWING NUMBER: 18000000 SCALE: 1"=100' DATE: 11/18/18		NAPA RIVER (R) HERFORD BEACH RESTORATION PLANTING SHEET	
SHEET NUMBER: P4 DATE: 11/18/18			



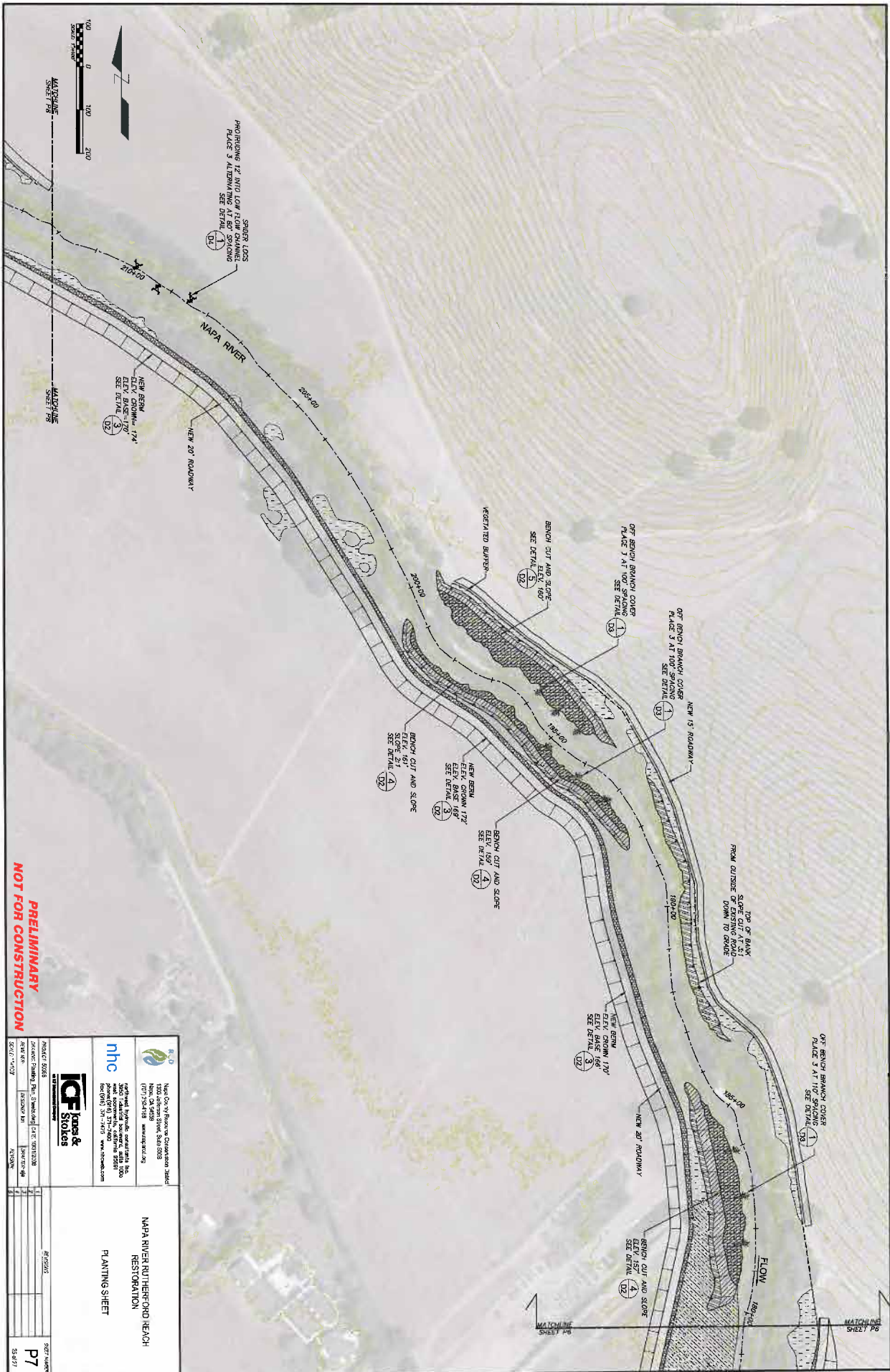


PRELIMINARY
NOT FOR CONSTRUCTION

 National Horticultural Conservation Council, Inc. 1400 Jefferson Street, Suite 800B Napa, CA 94559 (707) 252-7551 www.nhc.org		ICF Jones & Stokes CONSULTING ENGINEERS AND ARCHITECTS 2500 RIVER STREET, SUITE 200 NAPA, CA 94559 (707) 251-7123 www.icfjst.com	NAPA RIVER/RUTHERFORD BEACH RESTORATION PLANTING SHEET
PROJECT NUMBER: 2012008 DATE: 07/27/12 SCALE: 1/4"=1'-0"	SHEET NUMBER: P5 OF 23		

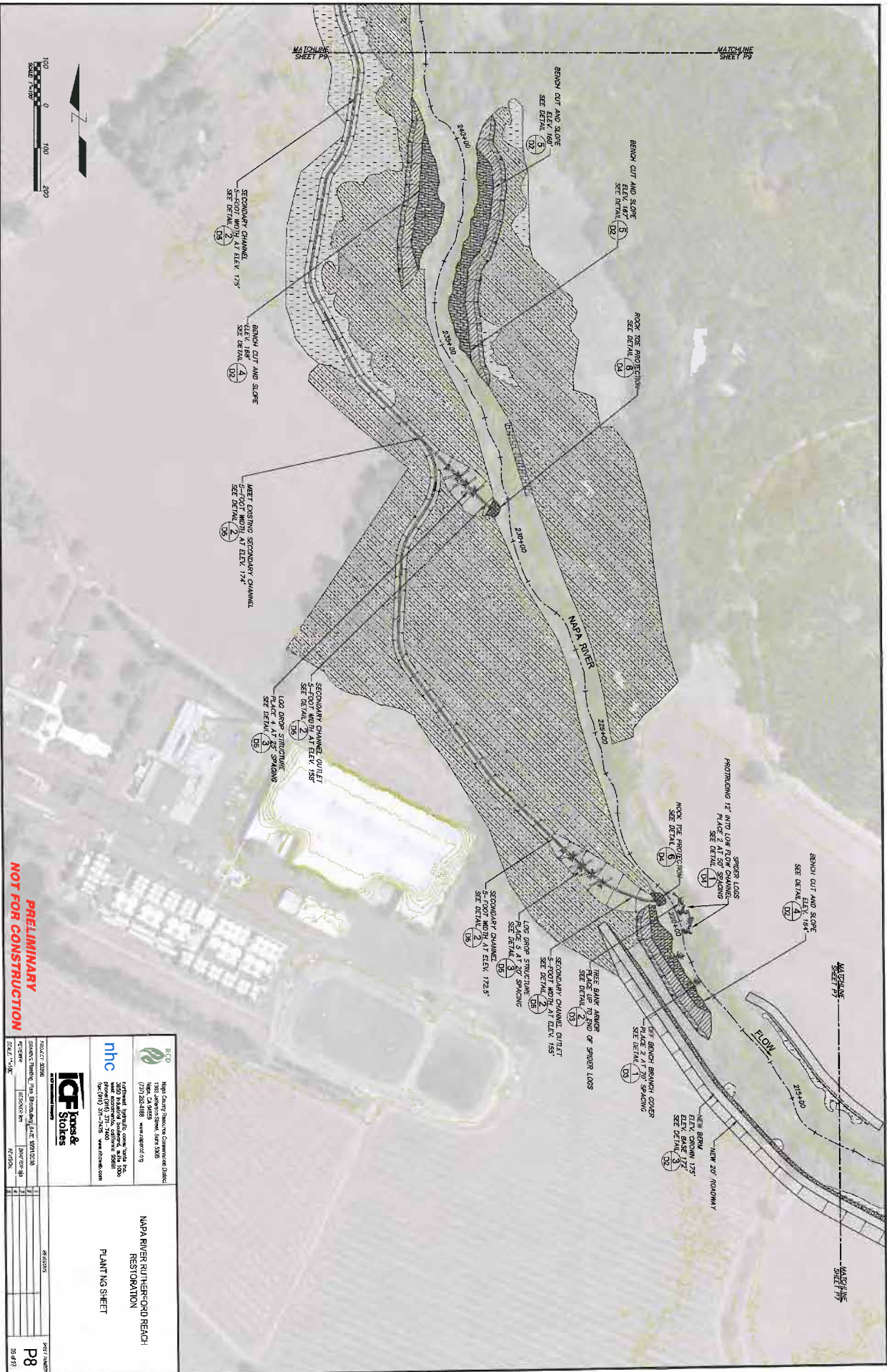


PROJECT: 0186 Napa River Planting, 7500 Sandhollow Ln., CA 94926	DATE: 08/27/2020	SCALE: 1"=100'
DESIGNER: [Redacted] PROJECT MANAGER: [Redacted]	CHECKER: [Redacted] SCALE: 1"=100'	DATE: 08/27/2020
nhc Newman Hazard Consulting 1000 Lakeside Drive, Suite 200B Novato, CA 94945 707.552.3100 www.nhcnc.com	ICF Jones & Stokes 12001 Rockledge Drive, Suite 100 San Diego, CA 92131 619.594.3500 www.icfjonesandstokes.com	PROJECT NO: 0186 SHEET NO: P6 DATE: 8/27/20
NAPA RIVER RUTHERFORD BEACH RESTORATION PLANTING SHEET		



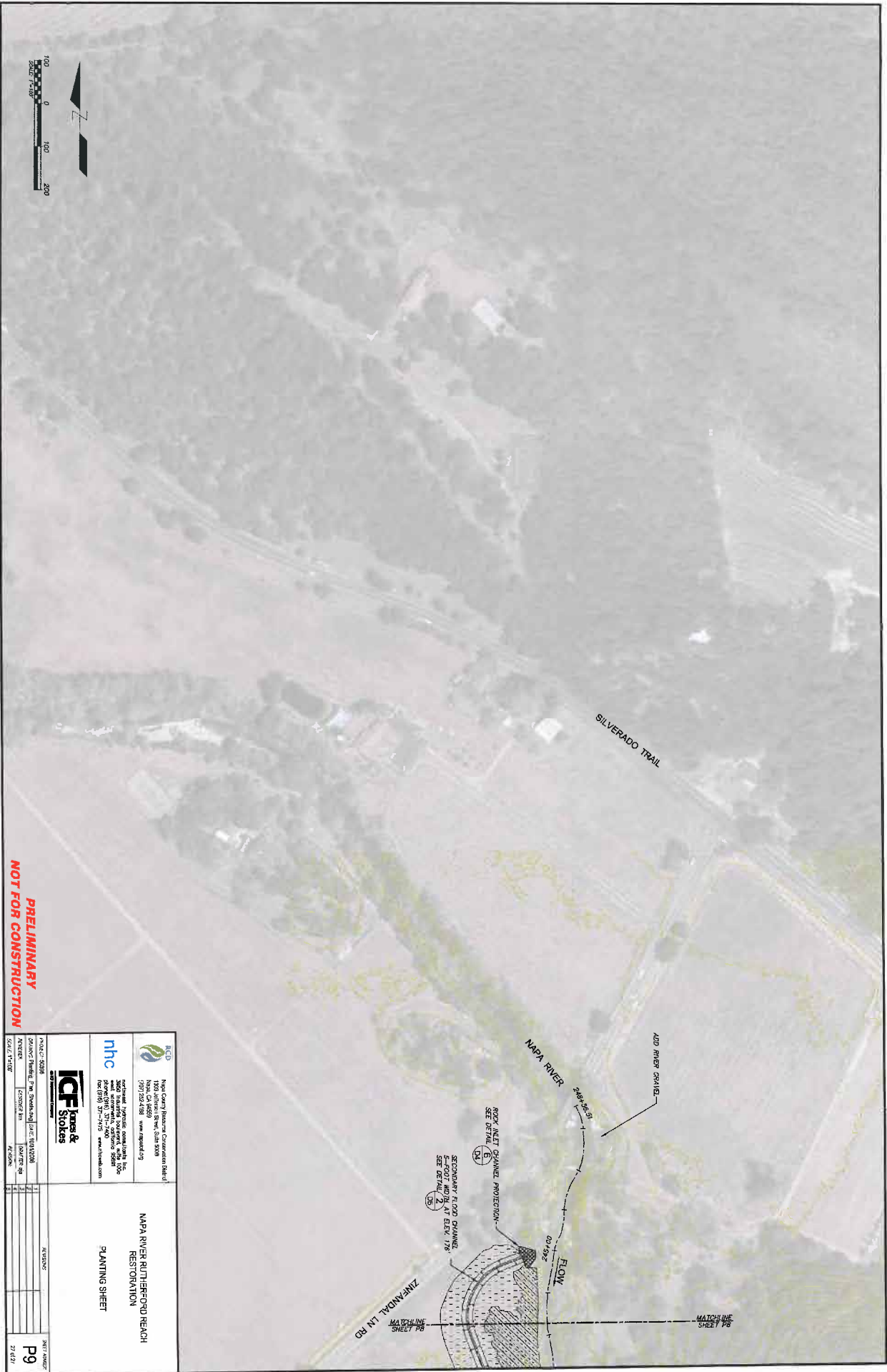
**PRELIMINARY
NOT FOR CONSTRUCTION**

<p>Napa County Resource Conservation District 1200 Jefferson Street, Suite 202B Napa, CA 94931 (707) 254-4118 www.nrcd.org</p>		<p>ICF Jones & Stokes</p> <p>3000 West Point Blvd., Suite 100 Napa, CA 94931 Tel: (707) 251-7475 www.icfjones.com</p>	<p>NAPA RIVER RUTHERFORD RANCH RESTORATION PLANTING SHEET</p>
<p>PROJECT: 5028 DRAWN: [Name] CHECKED: [Name] SCALE: AS SHOWN</p>	<p>DATE: 05/11/2018 SHEET NO: 18 TOTAL SHEETS: 18</p>		



PRELIMINARY
NOT FOR CONSTRUCTION

PROJECT NUMBER: 17001 DRAWING NUMBER: 17001-01 DATE: 08/15/17		ICF Jones & Stokes 17001-01-01 17001-01-01	
PROJECT NAME: NAPA RIVER RUTHERSFORD REACH RESTORATION		PROJECT LOCATION: NAPA RIVER RUTHERSFORD REACH RESTORATION	
SHEET NUMBER: P8		SHEET TOTAL: 88	



**PRELIMINARY
NOT FOR CONSTRUCTION**

		Napa County Resource Conservation District 1700 California Street, Suite 300B Napa, CA 94959 (707) 252-4100 www.nico.org	
		National Horticultural Conservation District 1700 California Street, Suite 300B Napa, CA 94959 (707) 252-4100 www.nhc.org	
		ICF Stokes 1000 California Street, Suite 300B Napa, CA 94959 (707) 252-4100 www.icfstokes.com	
PROJECT: 05088 DRAWING: 05088-01 DATE: 07/20/20 SCALE: 1"=400' SHEET: P9		NAPA RIVER RUTHERFORD REACH RESTORATION PLANTING SHEET	

SHEET: P9
DATE: 7/20/20