



Managing California's Resources in a Changing World

**Joe Grindstaff
Deputy Secretary, Water Policy
California Resources Agency**

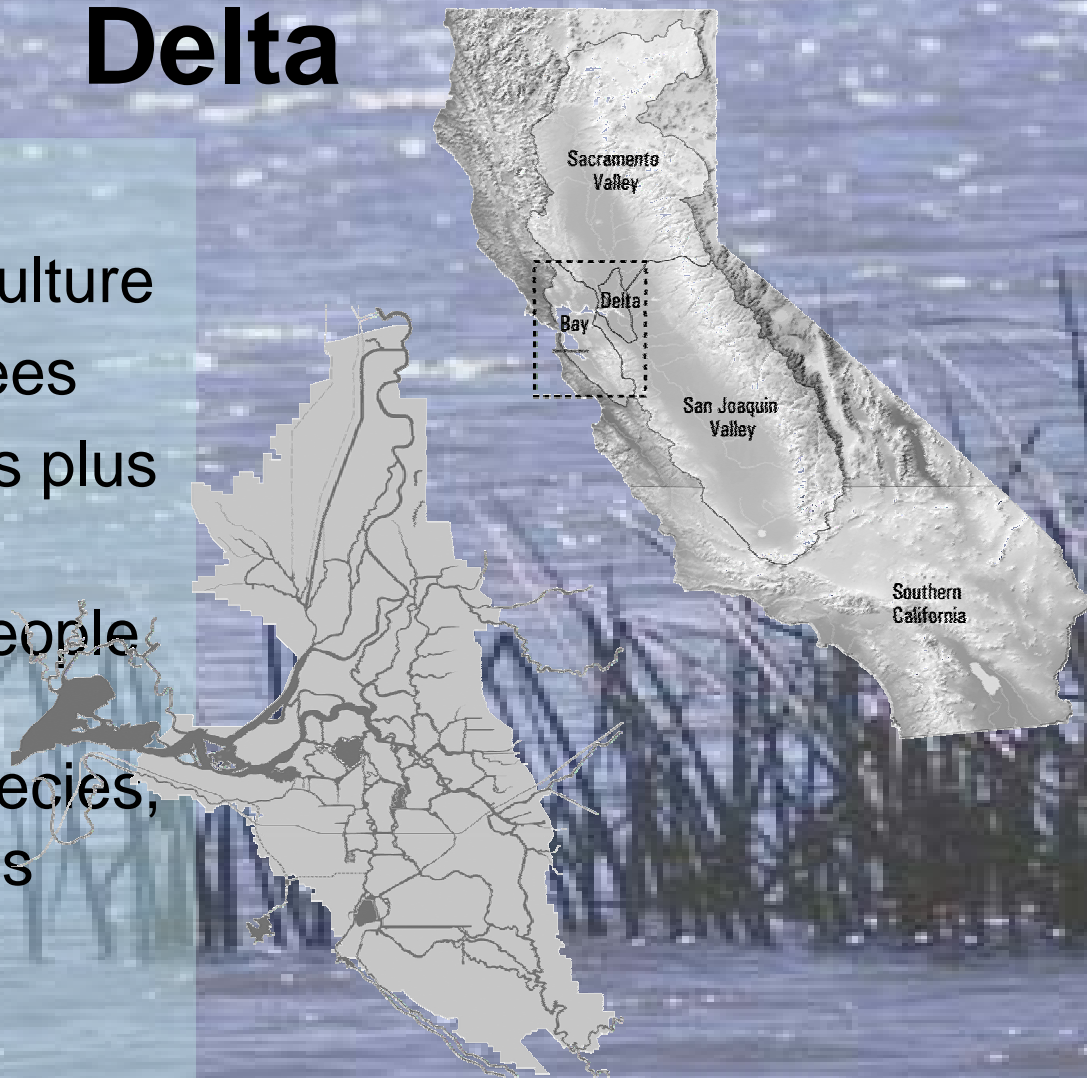
**Napa County Watershed Symposium
May 21, 2009**

State of California Water System

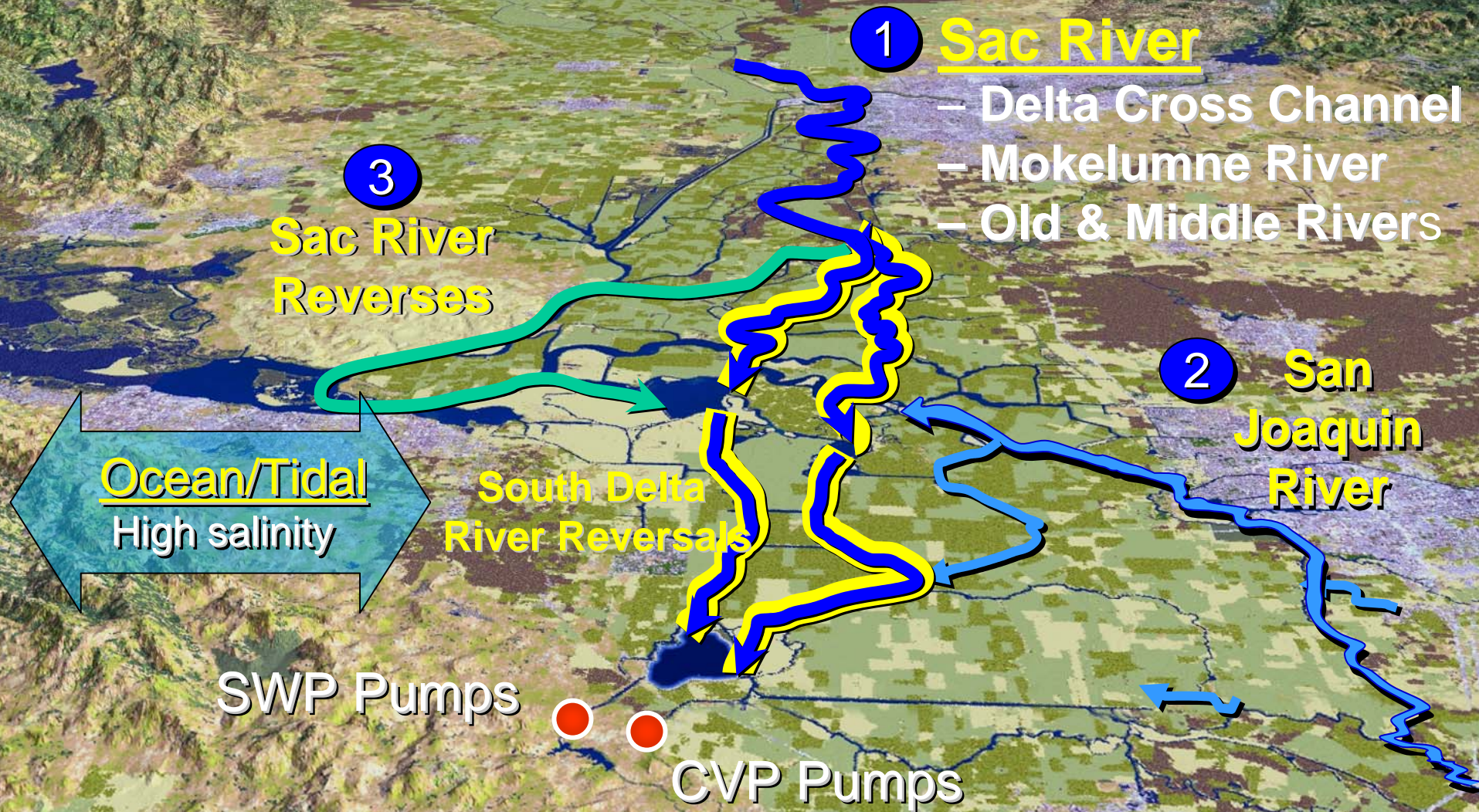


The Sacramento-San Joaquin Delta

- >700,000 acres
- Nearly 50% in agriculture
- >1,000 miles of levees
- 57 reclaimed islands plus channel islands
- Home to 515,000 people and more than 750 plant and animal species, including 31 listed as threatened or endangered

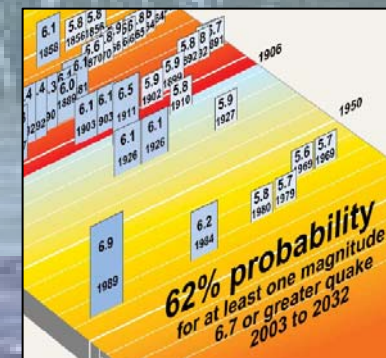
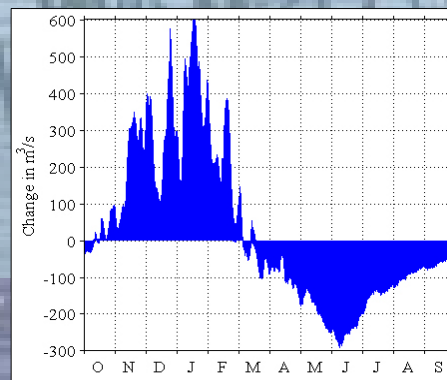
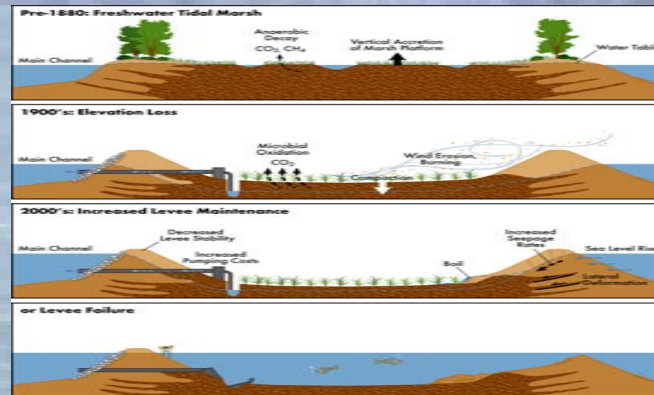


How Water Currently Flows Across the Delta



Drivers of Change in the Delta

- Climate change
- Sea level rise
- Urbanization
- Invasive species
- Subsidence
- Seismicity



Other Delta Issues

- Over-subscription of Bay-Delta system
- New water sources needed

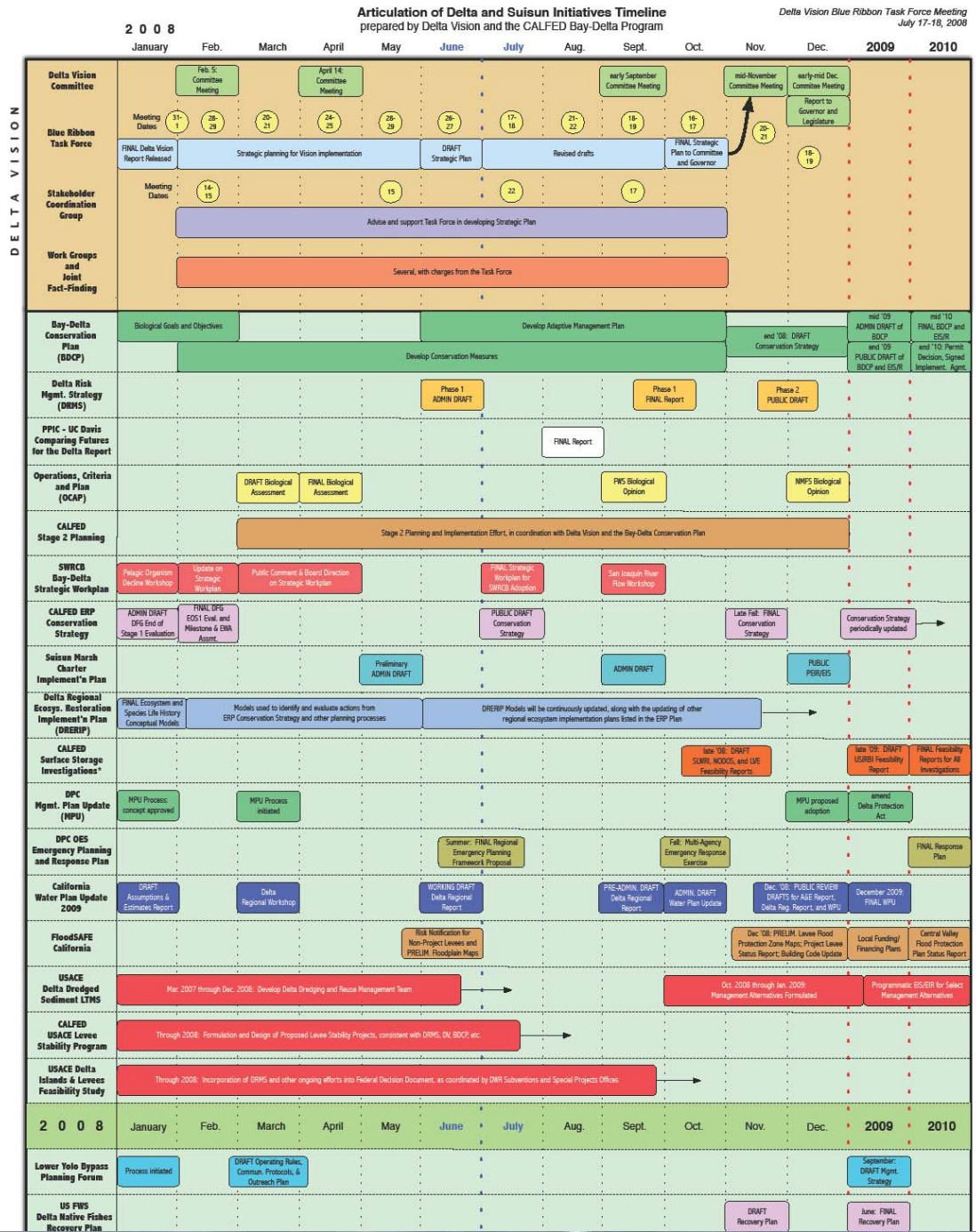


- Growing salinity on ag lands
- Drought/allocations



Intense Focus on Delta

- Delta Vision
- BDCP
- CALFED
- DRMS
- PPIC
- SWRCB
- DRERIP
- FloodSAFE
- Water Plan Update
- IEP POD
- DPC
- 4 Delta County GPUs
- USACE Levee Study
- More...



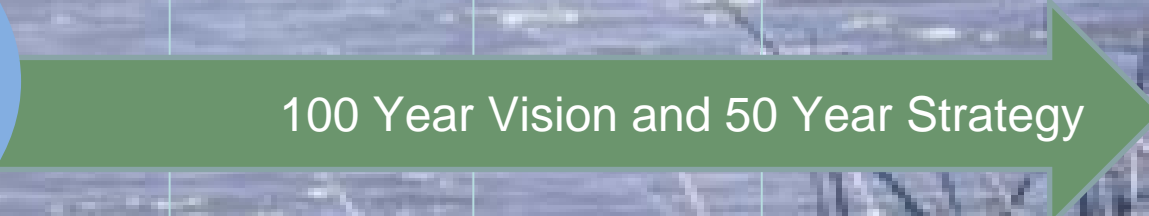
Major Delta Planning Efforts



Delta Vision

Land use, groundwater management, water conservation, recreation, governance, flood protection

Water supply
Ecosystem restoration

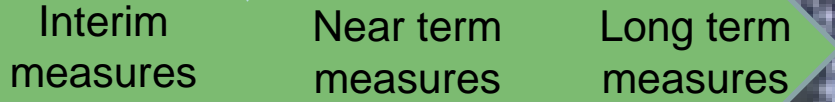


BDCP

Stakeholder collaboration

- Conservation plan with regulatory outcome

Water supply
Ecosystem restoration



BDCP Permit Term (50 years)

CALFED
Data informing Delta Vision and BDCP

DRMS

Federal efforts: ESA Recovery Plans
Other efforts: SWRCB

Delta Vision Strategic Plan

- Dual Conveyance
- Investment in ecosystem and ag lands
- Additional storage for greater flexibility
- Investment in the Delta region
- Comprehensive emergency preparedness
- Water conservation
- Incentives for efficient use and reuse
- Improved Delta governance

Bay-Delta Conservation Plan (BDCP)

- Conservation plan with regulatory outcome focused on water supply and ecosystem restoration
- Species goals include smelt, salmonids, Sacramento splittail and sturgeon
- Key areas of focus: Yolo Bypass, North Delta diversions, South Delta flows and entrainment, Sacramento River flow, Delta Cross Channel, Cache Slough, West Delta marsh restoration, Suisun tidal marsh restoration, interim tidal gates and Delta outflow targets

Covered Species



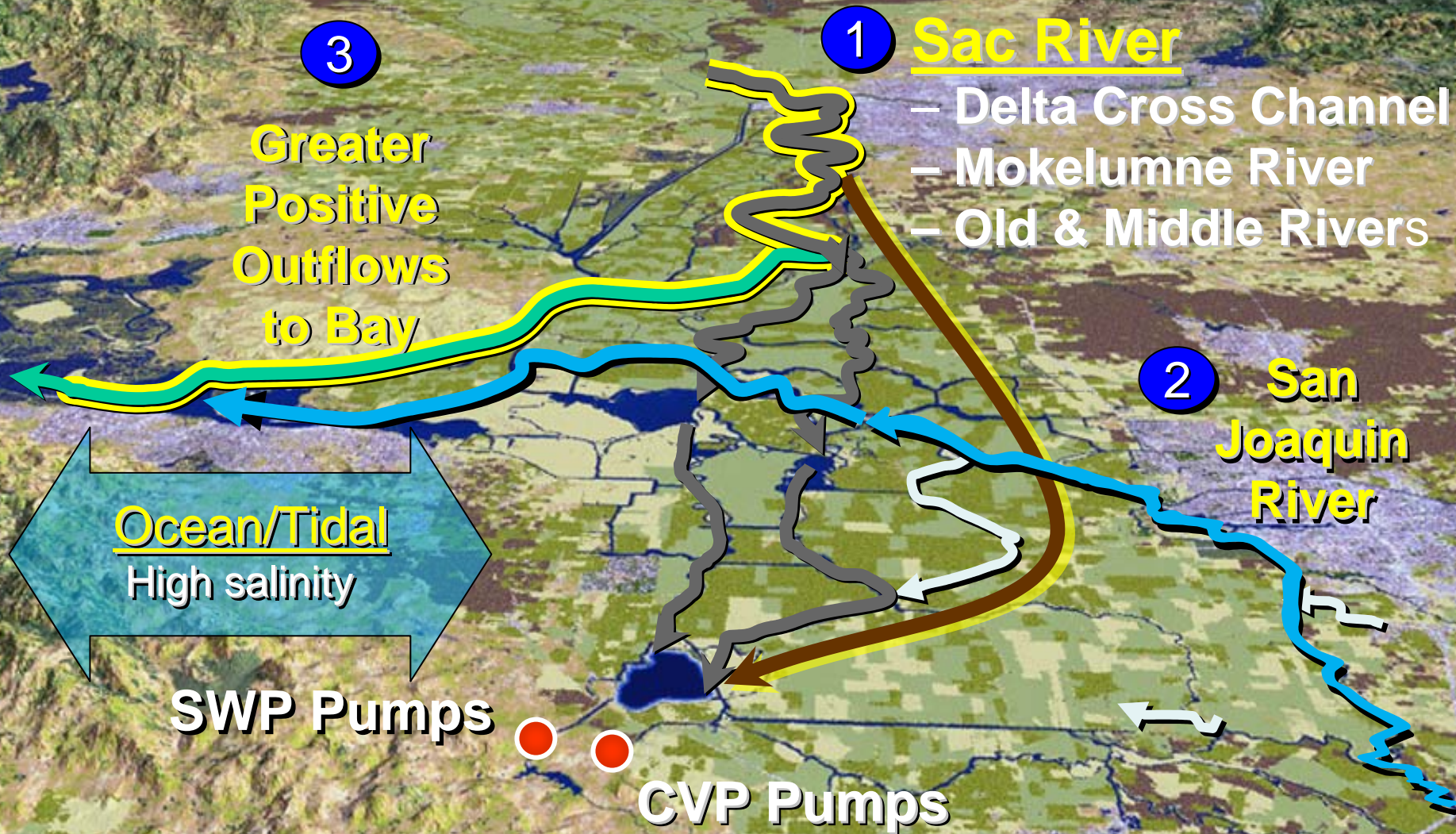
- Delta smelt
- Longfin smelt
- Chinook salmon
 - winter, spring, fall and late fall
- Green and white sturgeon
- Central valley steelhead
- Sacramento splittail



BDCP EIS/EIR

- Currently in development with DWR as lead agency under CEQA
- Cooperative effort with federal U.S. Bureau of Reclamation, the National Marine Fishery Service and the U.S. Fish and Wildlife Service
- Scoping meetings held March 2009
- EIS/EIR expected to be ready for public comment by late 2009/early 2010

How Water Would Get Across the Delta with BDCP



Near-Term Future

- Delta conservancy
- Delta council
- WUE legislation
- Water rights enforcement legislation
- Water bond
- Desalination
- Salinity management (groundwater)

Bonds and Financing

- Water bond resurfacing in Legislature
 - Six bills introduced
- Secure financing for Delta initiatives
 - Conveyance (SB12); surface storage (SB 371); many others
- Governance
 - Three bills: AB 36 (Huffman); SB 229 (Pavley); SB 457 (Wolk)
- A total of 25 bills introduced that relate to Delta Vision, BDCP and CALFED issues

Water Conservation

- Governor's 20 percent by 2020
- State of Emergency Declaration: immediate increase in conservation activities to reduce urban water use by 20 percent
- More than a dozen bills dealing with water conservation and recycled water introduced

Delta Conservancy

- AB 13 (Salas); AB 642 (Huber); SB 12 (Simitian); and SB 458 (Wolk) create Sacramento-San Joaquin Delta Conservancy
 - Prescribes management, powers and duties of the conservancy
 - Creates the Sacramento-San Joaquin Delta Conservancy Fund in the State Treasury. Funds would be available, upon appropriation, for the purposes of the conservancy.

Prominent Legal Issues

- Federal OCAP Biological Opinion ESA cases (smelt and salmonids)
 - Six pending before Judge Wanger: two challenging the original Biological Opinion (BO) and 4 challenging the new smelt BO
- New salmonid BO due June 2 will likely have additional water supply impacts, which may engender more litigation
- New federal case challenging the BDCP EIR/S process brought by South and Central Delta Water Agencies and recently transferred to J. Wanger.
- Five bills introduced dealing with water rights, illegal water appropriations and area of origin statutes

Discussion and Questions

- Delta Vision
 - www.deltavision.ca.gov
- Bay-Delta Conservation Plan
 - <http://www.resources.ca.gov/bdcp/>
- The California Drought
 - <http://www.water.ca.gov/drought/>
- Contact information for Joe Grindstaff:
 - edmartin@calwater.ca.gov