

## **Groundwater Level Conditions Update:**

### **Napa Valley Floor, MST Subarea, and Carneros Subarea**

September 8, 2015

1. Throughout March 2015, Napa County staff recorded groundwater levels in a total of 94 wells, including 5 county-owned monitoring wells at surface water/groundwater monitoring sites. These included:
  - 46 wells in the Napa Valley Floor Subareas
  - 24 wells in the MST Subarea
  - 12 wells in the Carneros Subarea
  - 12 wells in other groundwater subareas.
2. Overall, the spring 2015 data show that groundwater levels have remained stable or have increased relative to spring 2014 groundwater levels, as indicated by subarea below:

#### Napa Valley Floor Subareas

- In the St. Helena Subarea groundwater levels increased up to 8 ft. or remained stable between spring 2014 and spring 2015 in four wells with long-term records.
- In the Yountville Subarea groundwater levels increased between 5 ft. and 8 ft. between spring 2014 and spring 2015 in six wells with long-term records.
- In the Napa and Calistoga Subareas groundwater levels were stable between spring 2014 and spring 2015 in six wells with long-term records.

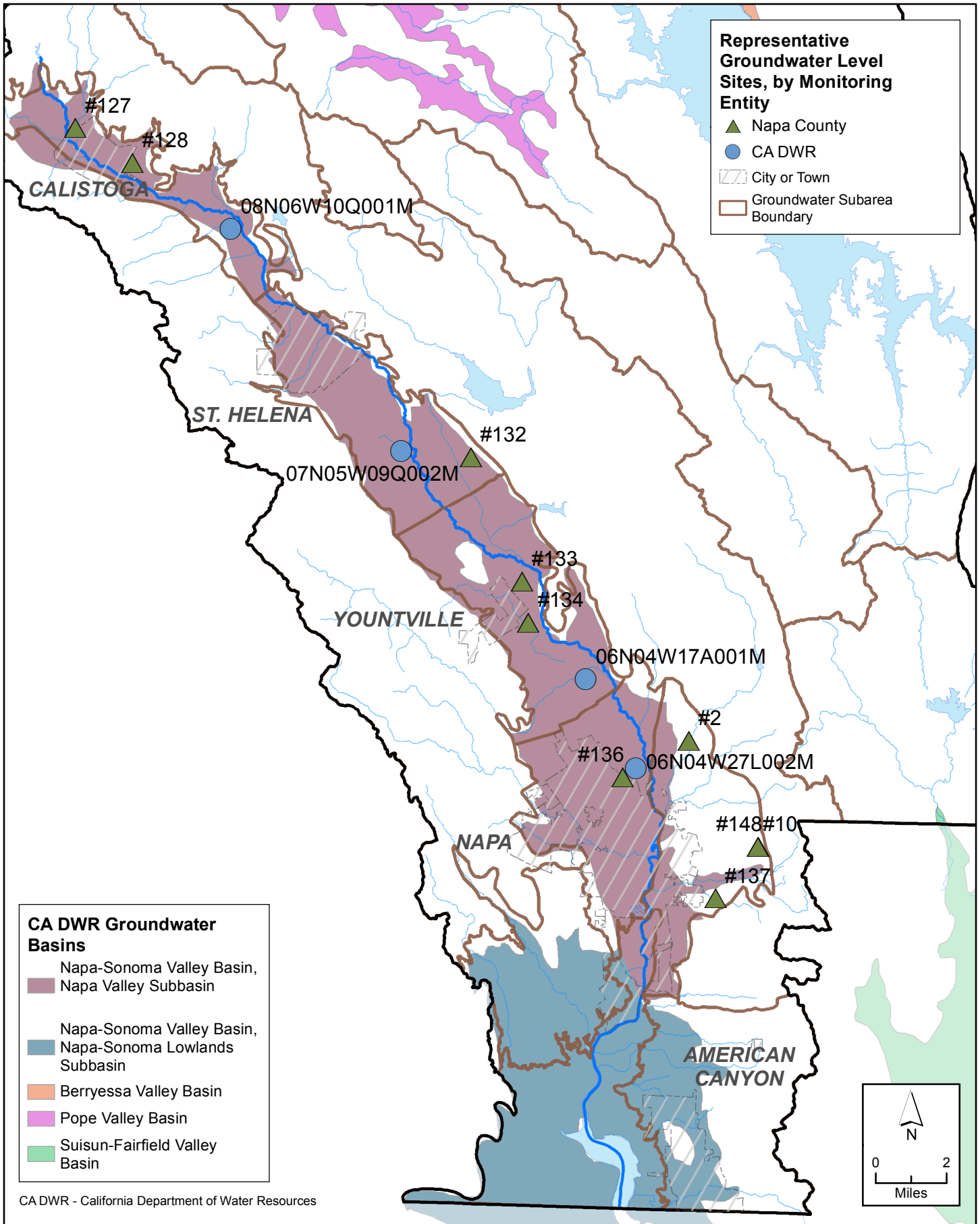
#### MST Subarea

- Between spring 2014 and spring 2015 groundwater levels increased or remained stable in 18 of 21 wells with long-term records, with water level increases of at least 10 ft. in 9 wells.

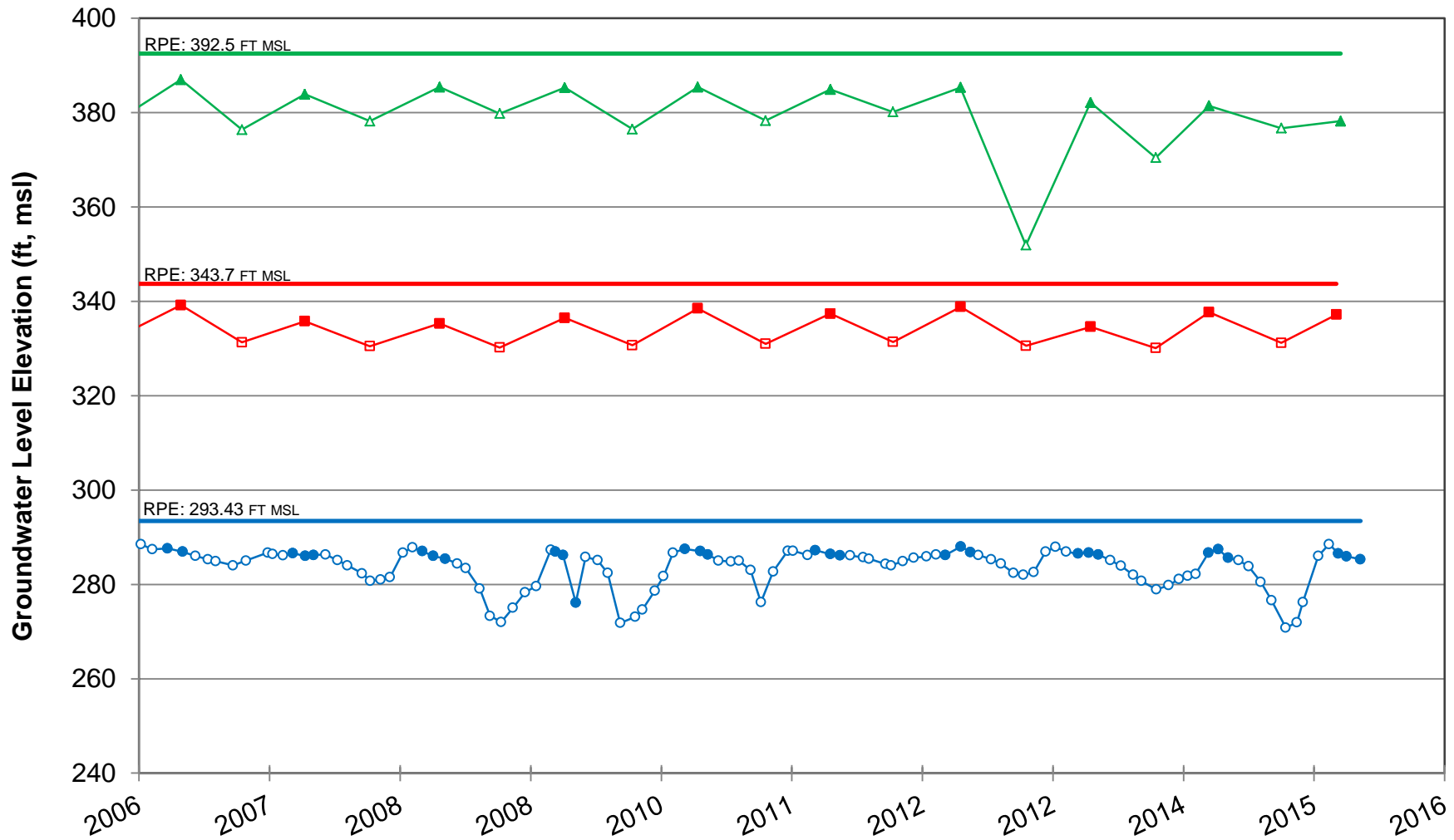
#### Carneros Subarea

- Although no currently monitored wells have long-term data records, between spring 2014 and spring 2015 groundwater levels were stable in 9 of 10 wells with at least two years of data.

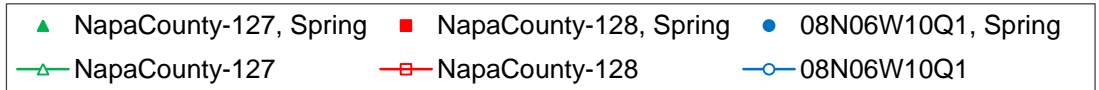
3. Currently monitored wells in the Napa Valley Floor with long-term records show that, where drought-related water level declines have been observed in the past, water levels in spring 2015 were above the levels recorded in spring during the 1976/1977 drought, which was the worst drought on record in both Napa Valley and throughout California.
4. In August 2015, the County began interim monthly monitoring at a subset of 9 wells in the Napa Valley Floor to address data gaps identified in the 2014 Groundwater Monitoring Program Annual Report, which recommended more frequent data collection.
  - The August 2015 data show that groundwater levels are consistent with previous late summer/fall season readings at these wells, indicating no unexpected declines over the summer at these locations.



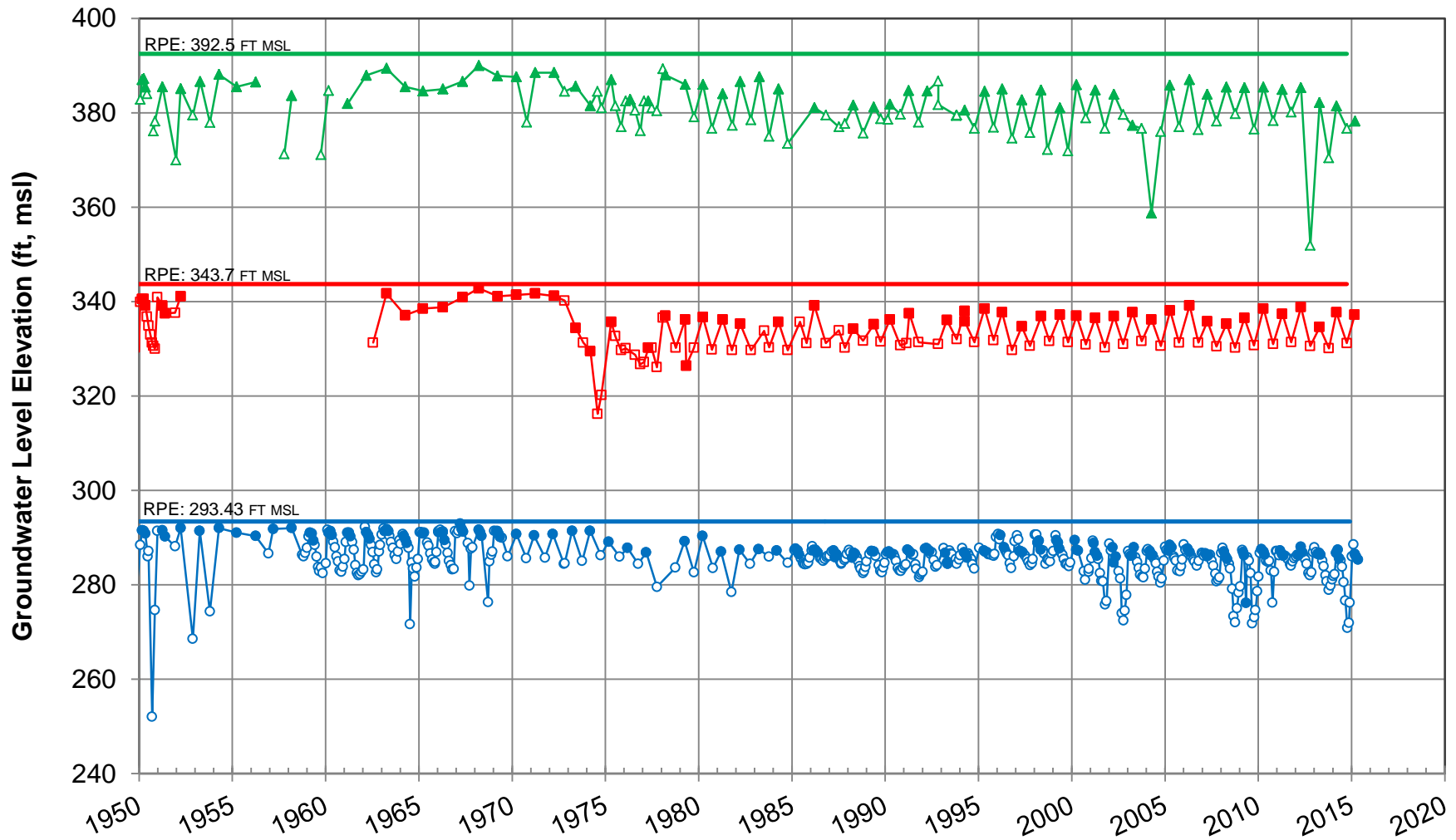
X:\2014 Job Files\14-108\GIS\Mapfiles\\_Napa County 2015 Rep Hydrograph Sites and Monthly GWL Sites.mxd



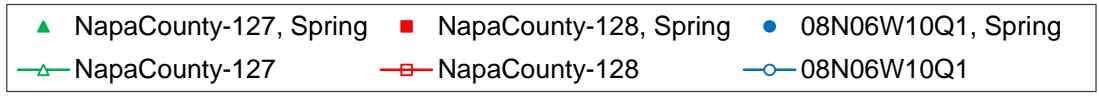
RPE = Reference Point Elevation  
 msl = mean sea level, North American Vertical Datum of 1988



X:\2014 Job Files\14-054\WICC Web Site\Representative Hydrographs\_full.xlsx\Calistoga



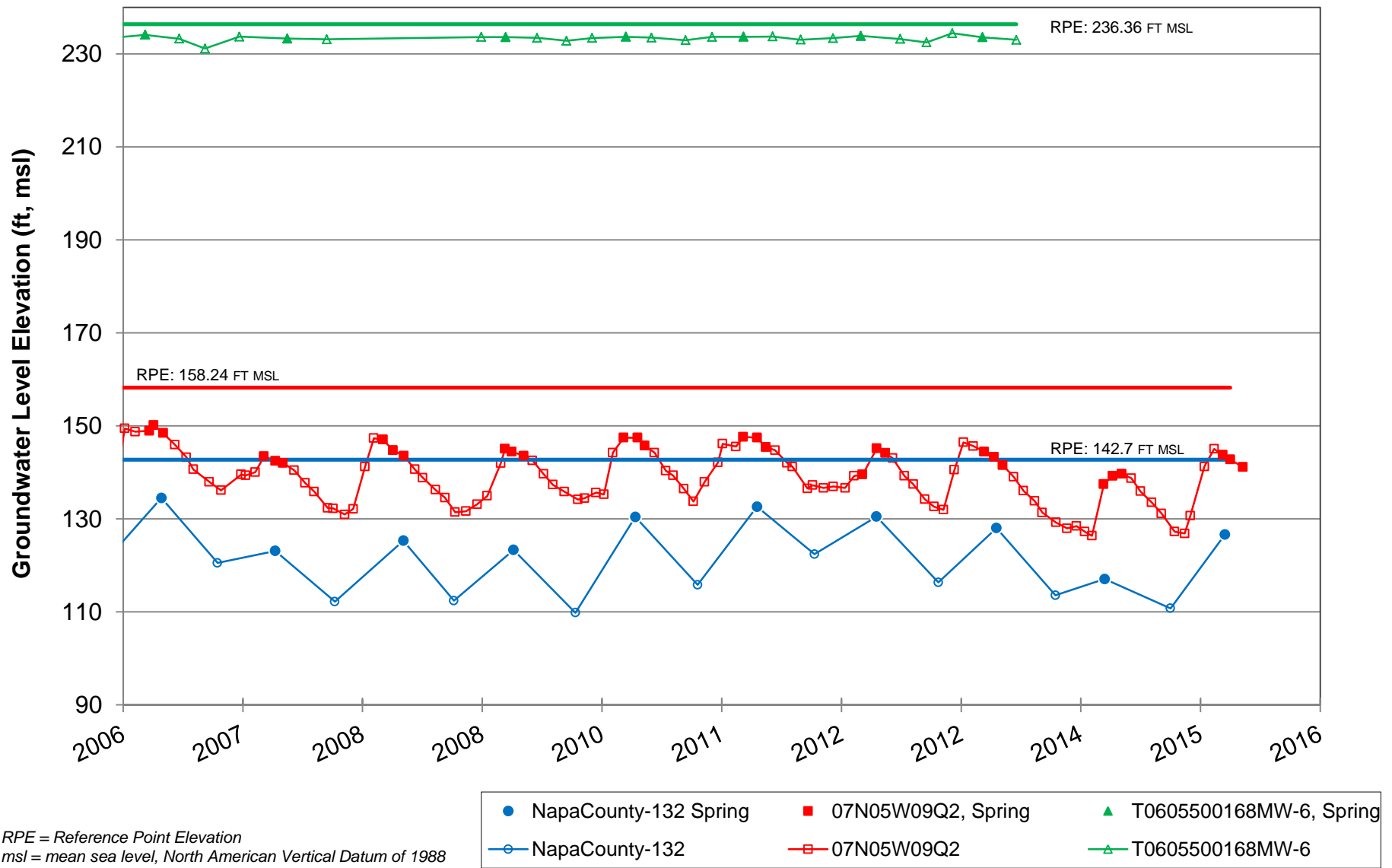
RPE = Reference Point Elevation  
 msl = mean sea level, North American Vertical Datum of 1988



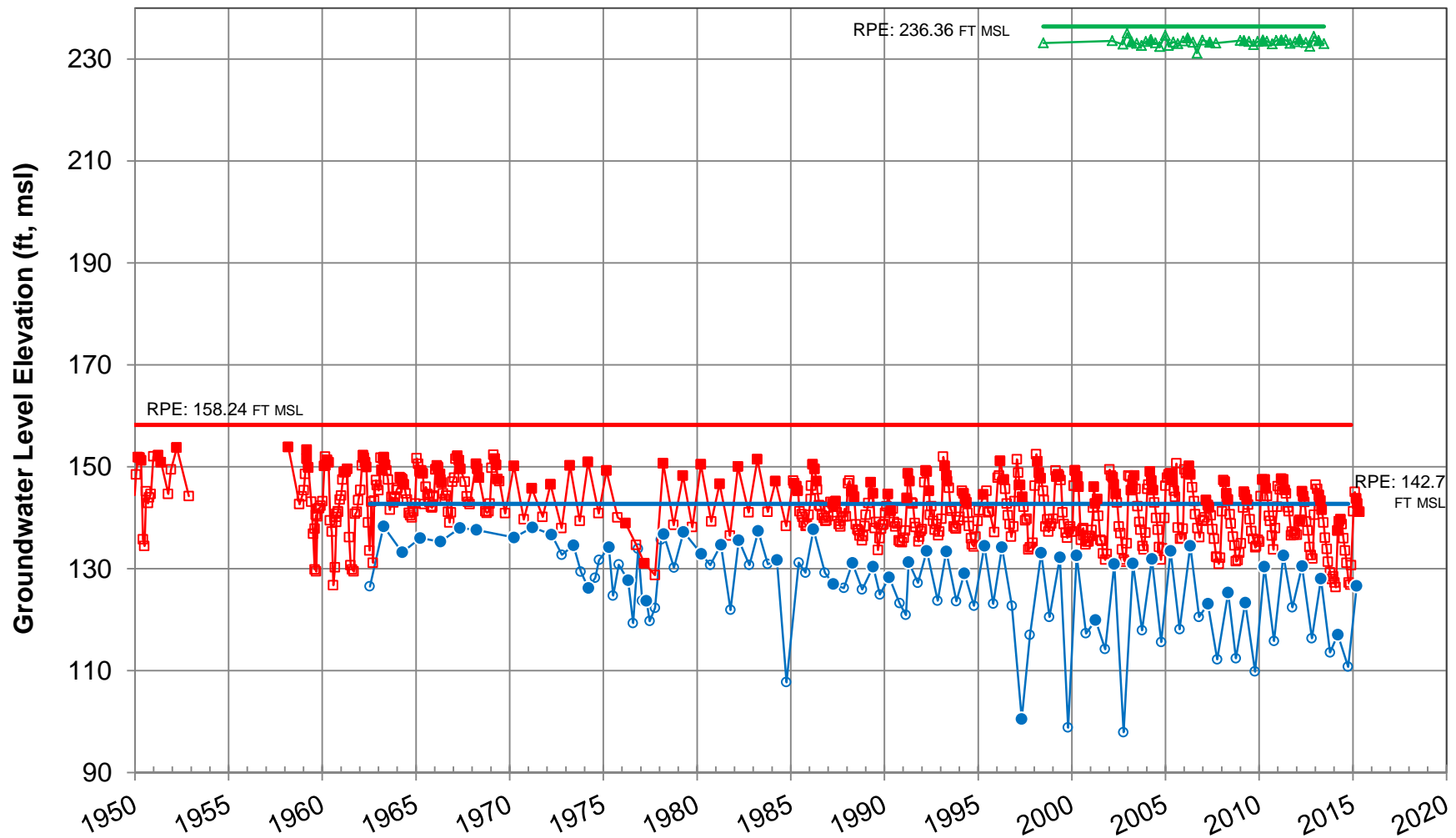
X:\2014 Job Files\14-054\WICC Web Site\Representative Hydrographs\_full.xlsx\Calistoga



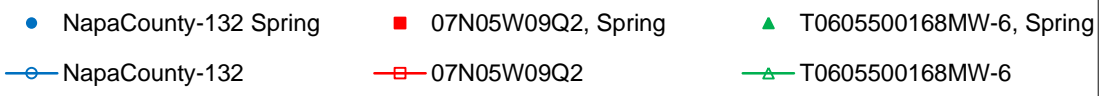
**Representative Groundwater Hydrographs  
 Subarea: Napa Valley Floor - Calistoga**



X:\2014 Job Files\14-108\Data\Representative Hydrographs\_full.xlsx\Helena



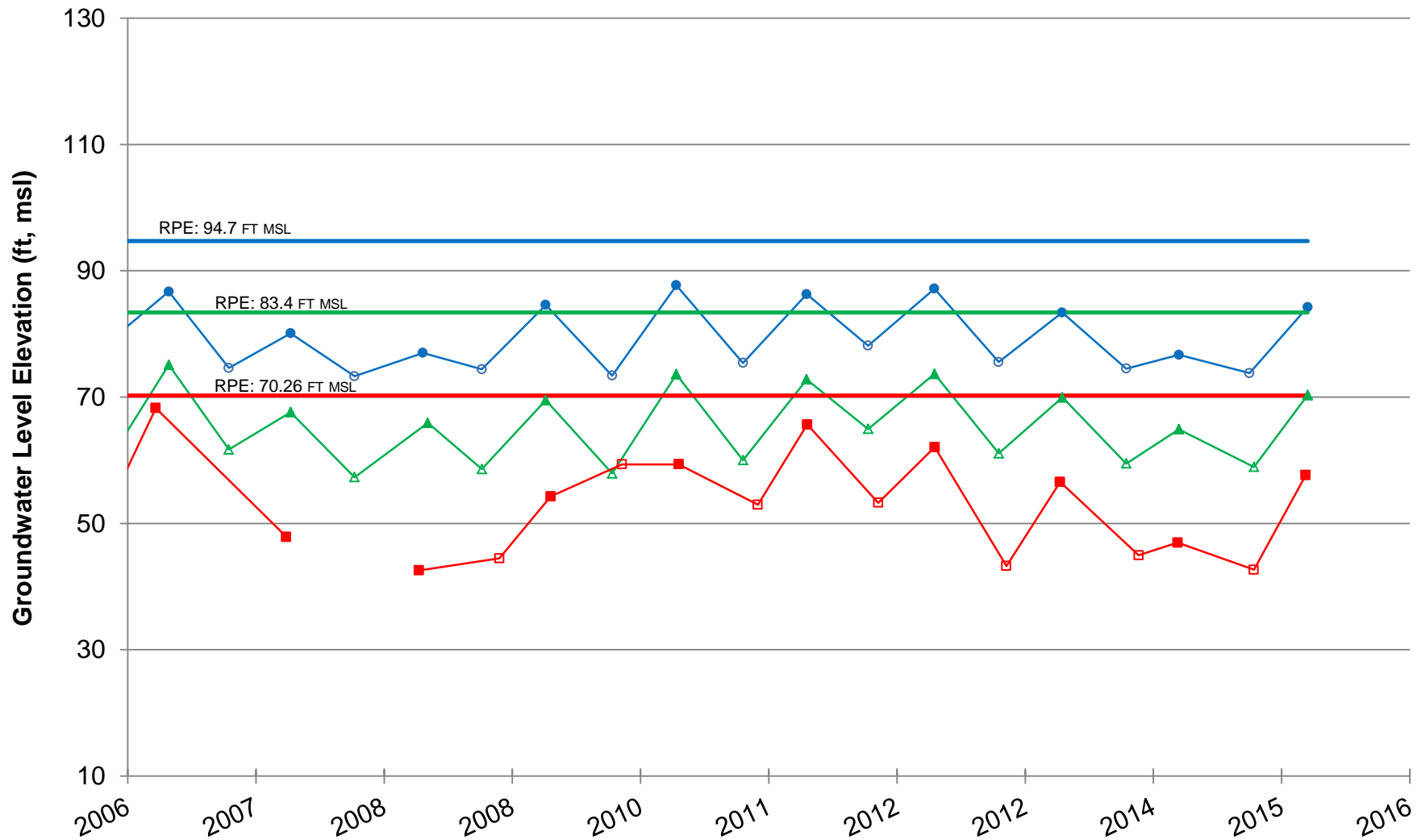
RPE = Reference Point Elevation  
 msl = mean sea level, North American Vertical Datum of 1988



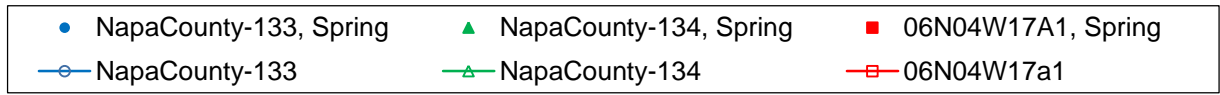
X:\2014 Job Files\14-108\Data\Representative Hydrographs\_full.xlsx\Helena



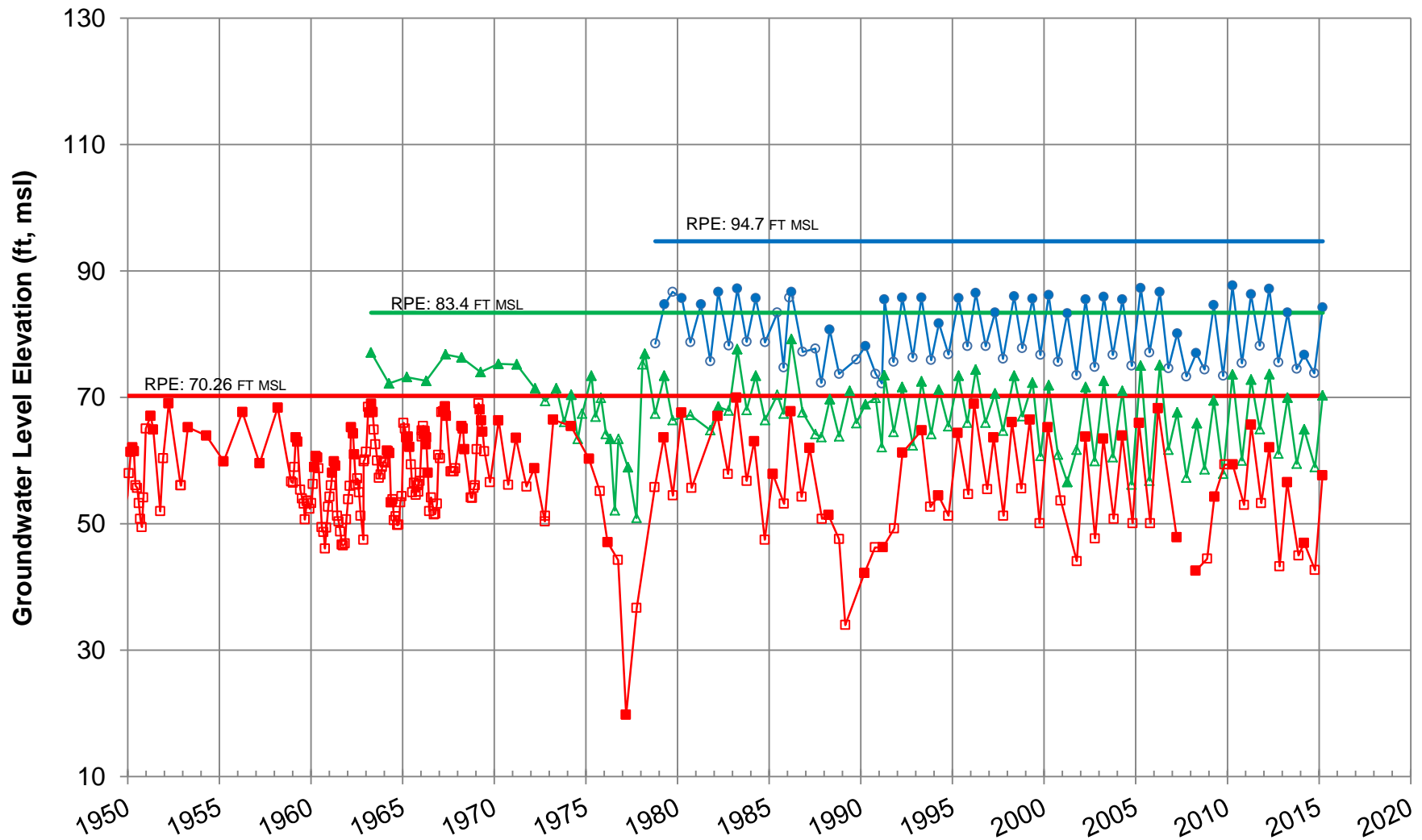
**Representative Groundwater Hydrographs**  
**Subarea: Napa Valley Floor - St. Helena**



RPE = Reference Point Elevation  
 msl = mean sea level, North American Vertical Datum of 1988



X:\2014 Job Files\14-054\WICC Web Site\Representative Hydrographs\_full.xlsx\Yountville



RPE = Reference Point Elevation  
 msl = mean sea level, North American Vertical Datum of 1988

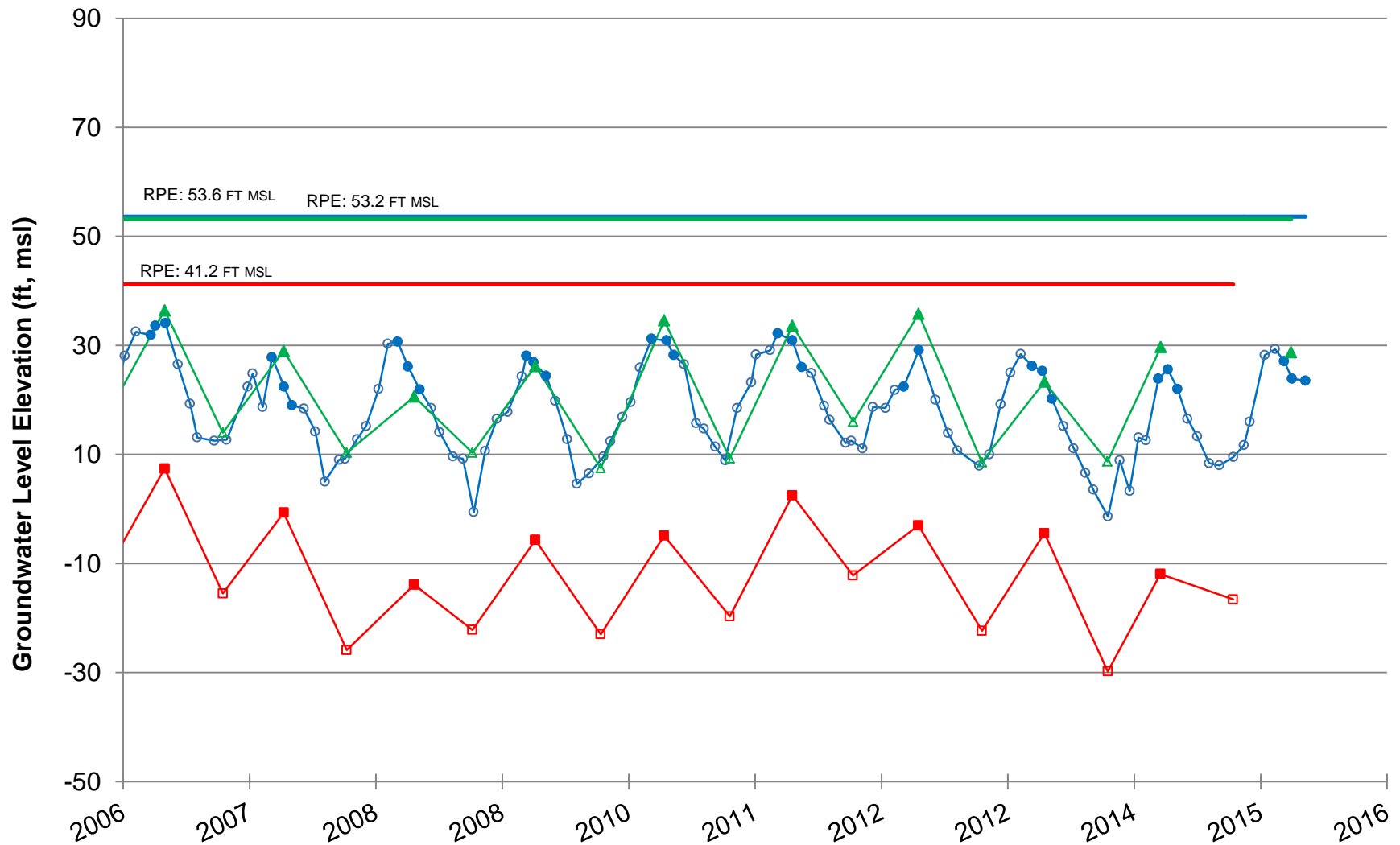
- NapaCounty-133, Spring
- ▲ NapaCounty-134, Spring
- 06N04W17A1, Spring
- NapaCounty-133
- △ NapaCounty-134
- 06N04W17a1

X:\2014 Job Files\14-054\WICC Web Site\Representative Hydrographs\_full.xlsx\Yountville

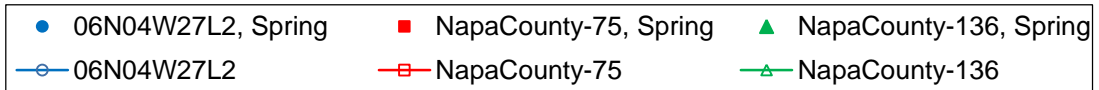


**Representative Groundwater Hydrographs**  
**Subarea: Napa Valley Floor - Yountville**





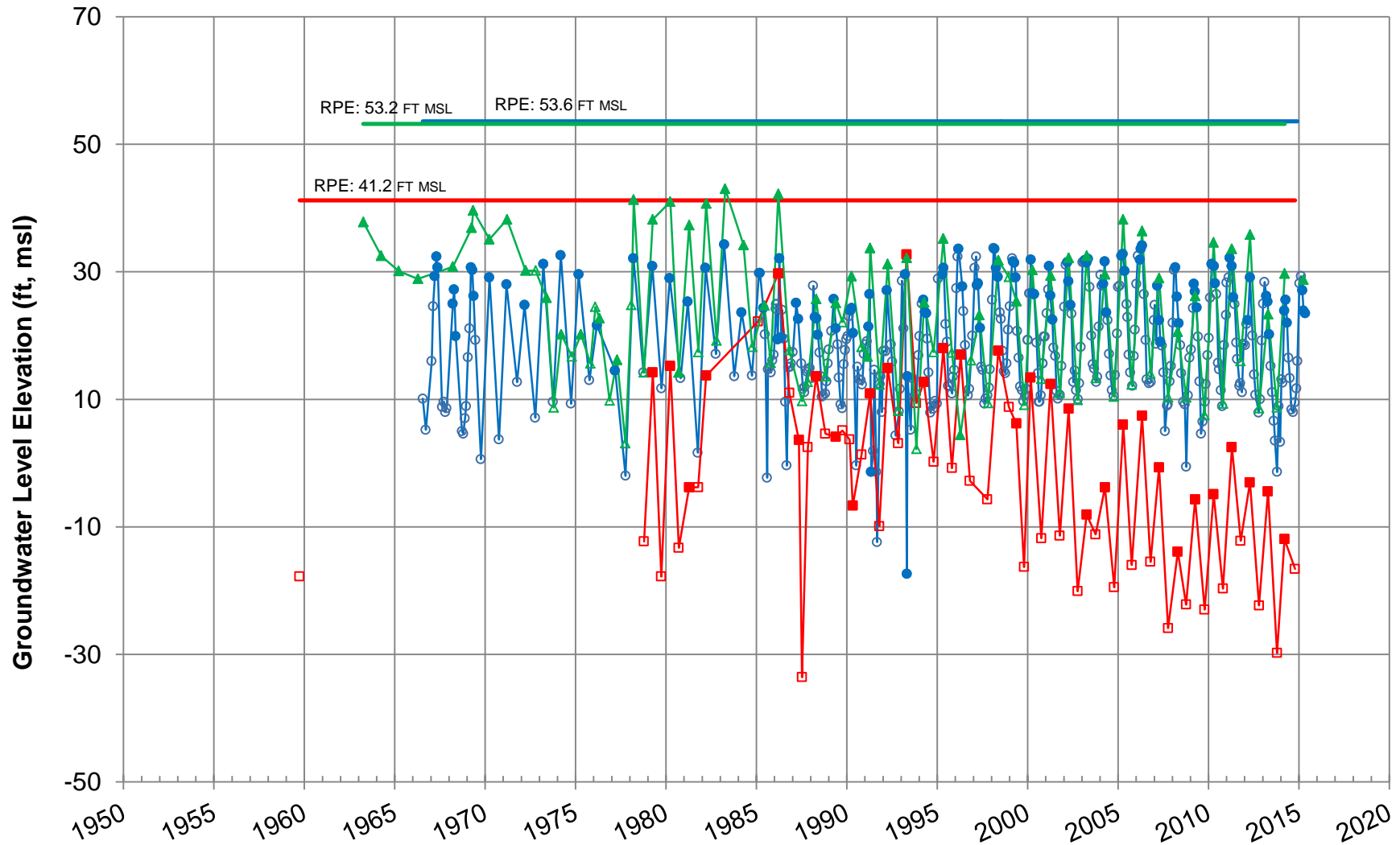
RPE = Reference Point Elevation  
 msl = mean sea level, North American Vertical Datum of 1988



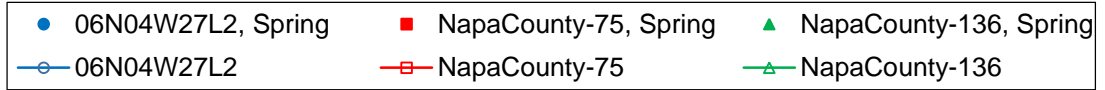
X:\2014 Job Files\14-054\WICC Web Site\Representative Hydrographs\_full.xlsx\Napa



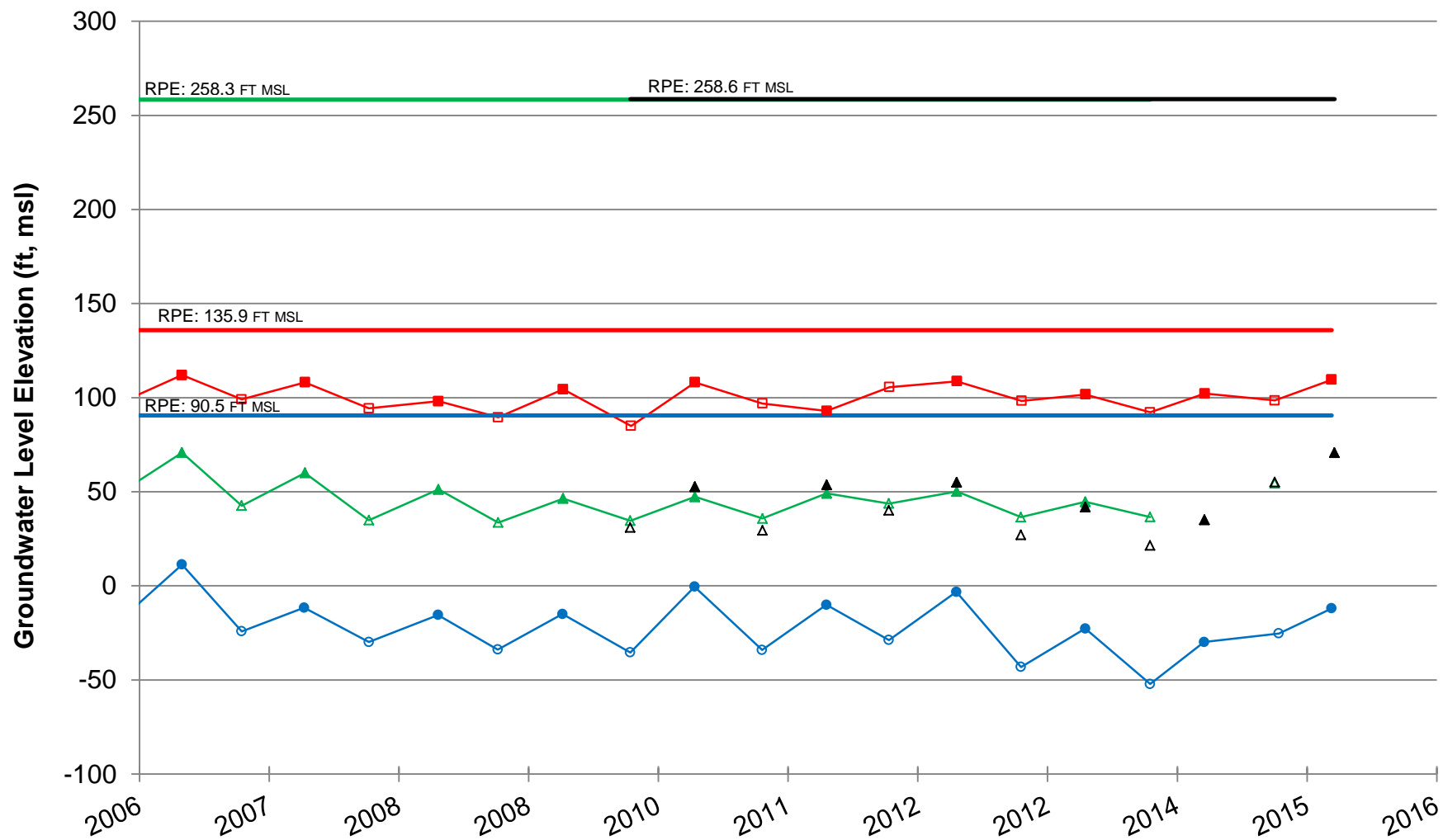
**Representative Groundwater Hydrographs  
 Subarea: Napa Valley Floor - Napa**



RPE = Reference Point Elevation  
 msl = mean sea level, North American Vertical Datum of 1988



X:\2014 Job Files\14-054\WICC Web Site\Representative Hydrographs\_full.xlsx\Napa



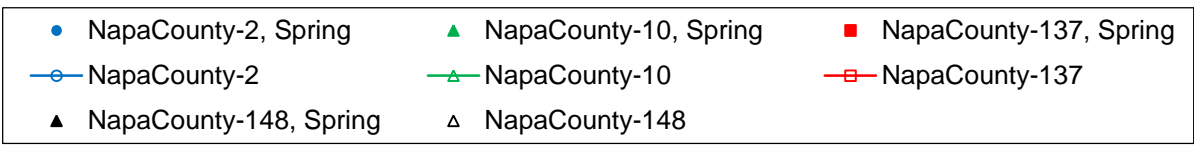
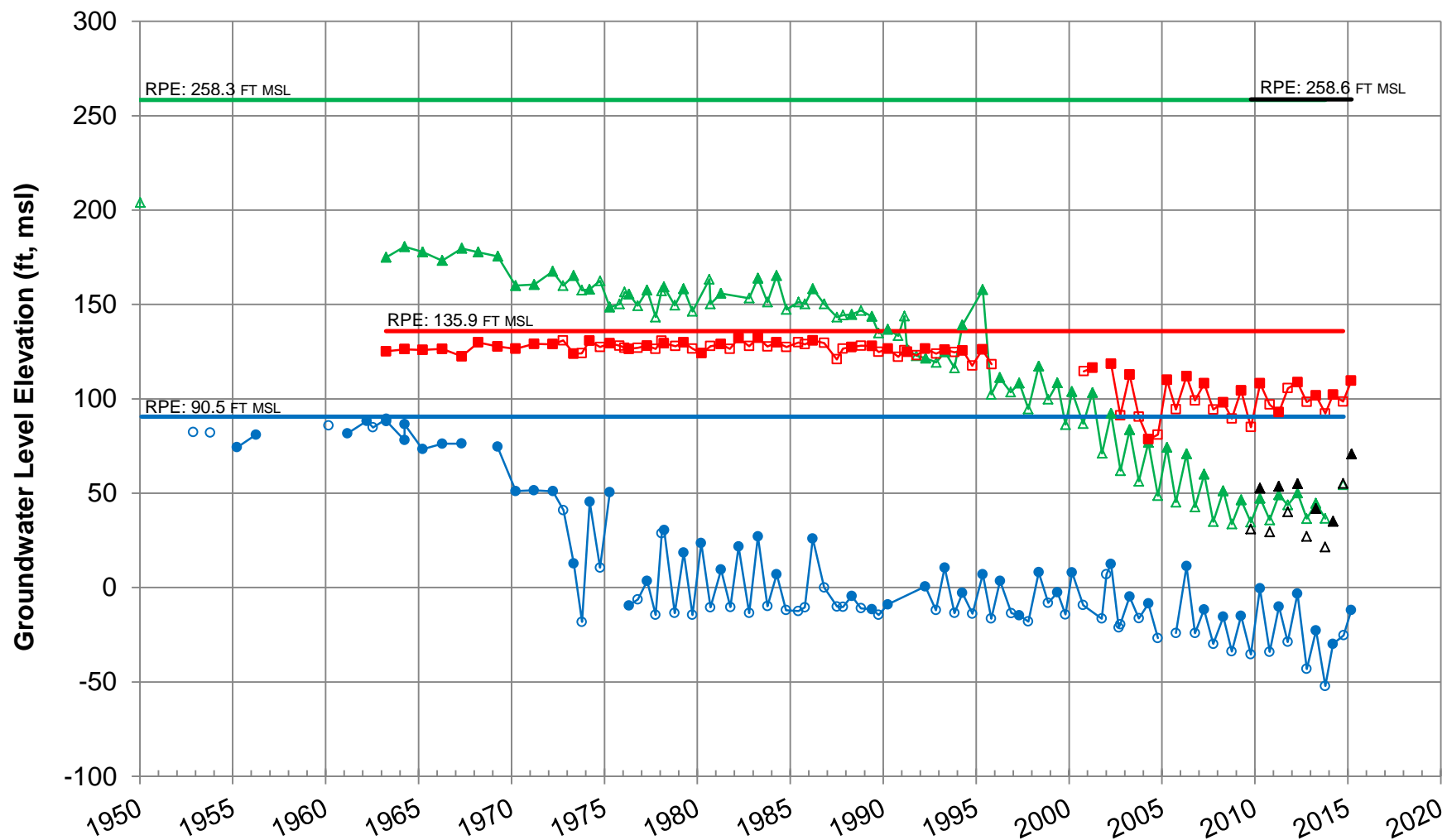
RPE = Reference Point Elevation  
 msl = mean sea level, North American Vertical Datum of 1988

- NapaCounty-2, Spring
- ▲ NapaCounty-10, Spring
- NapaCounty-137, Spring
- NapaCounty-2
- △ NapaCounty-10
- NapaCounty-137
- ▲ NapaCounty-148, Spring
- △ NapaCounty-148

X:\2014 Job Files\14-054\WICC Web Site\Representative Hydrographs\_full.xlsx\MST



**Representative Groundwater Hydrographs  
 Subarea: Napa Valley Floor - MST**



RPE = Reference Point Elevation  
 msl = mean sea level, North American Vertical Datum of 1988

X:\2014 Job Files\14-054\WICC Web Site\Representative Hydrographs\_full.xlsx\MST



**Representative Groundwater Hydrographs  
 Subarea: Napa Valley Floor - MST**