

Abandoned Mines Brownfields Assessment Project

*A voluntary program to address the
impacts of our mining legacy in Napa Co.*

Stephen McCord



WICC

Thursday, March 23, 2017

- Real property [where] (re)development is complicated by...contaminants...or is mine-scarred land.”
- Program provides:
 - Liability protection
 - Fund\$
 - Technical assistance
- NOT enforcement

Why care about abandoned mines?

- Health/safety risks
- Environmental hazards
- Opportunities for land use



How can this project help Napa County?

- Identify & prioritize eligible sites for cleanup
- Assess sites & write cleanup plans



- Springboard for additional fund\$
- Area-wide plan for long-term cleanup & land use



1950's photo of project site; common to CA mercury mining



Mine Site Cleanup Efforts



Fence



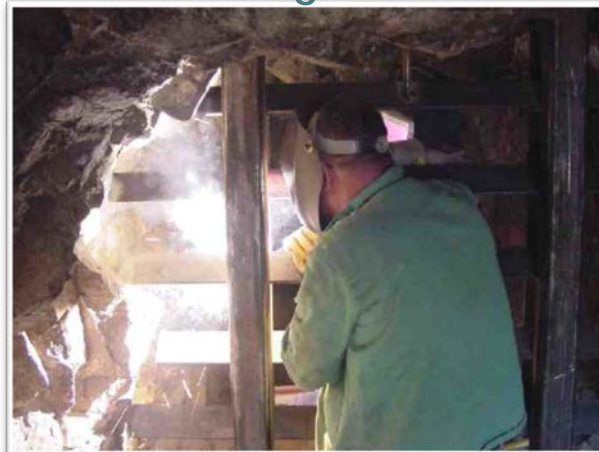
Backfill



Culvert gate



Foam fill



Bat gate

Cupola



Westside Mines Brownfields

by BSK Associates

World

Operational Layers

- 2000_Poverty_Rate_Percent_Below_Poverty_Level ...
- land_use ...
- geologic_units ...
- pop_by_block ...
- Counties ...
- Watershed Boundary ...
- USGS Mineral Resources Mine Data ...
- Topographic Map Symbols (Points) ...
- Principal Areas of Mine Pollution (Pamp) ...
- Topographic Map Symbols (Area) ...

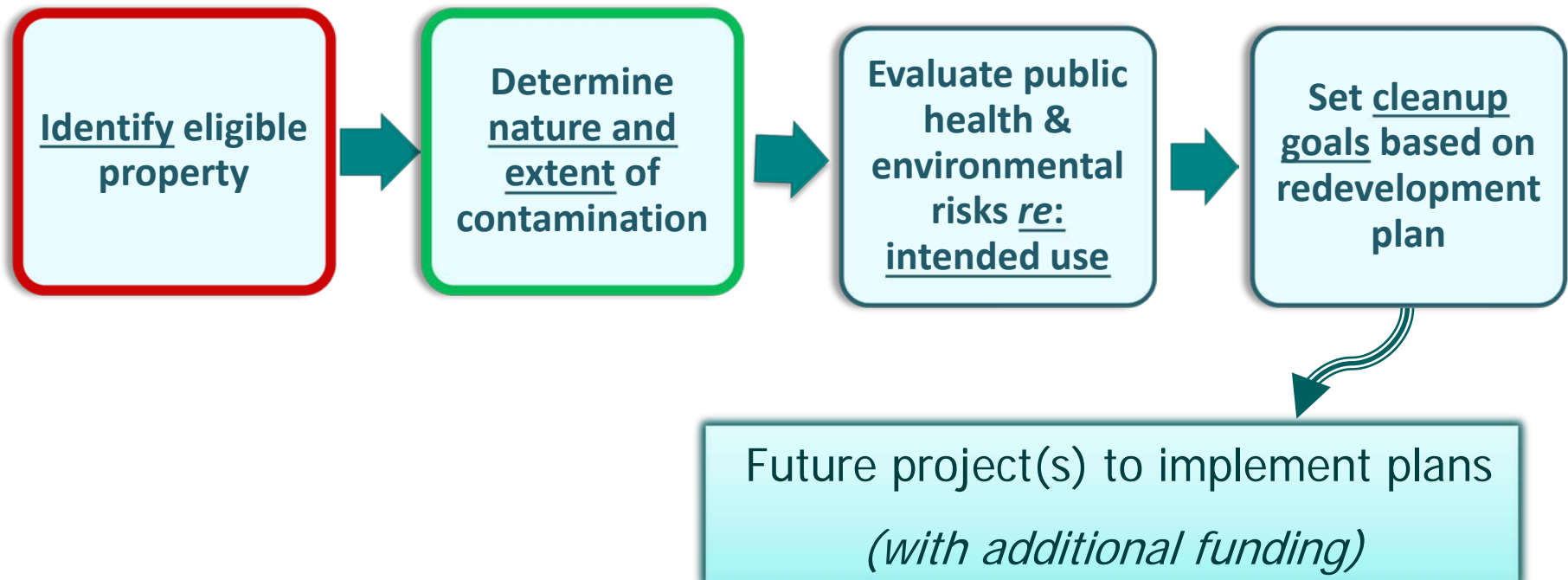
8

What's eligible?

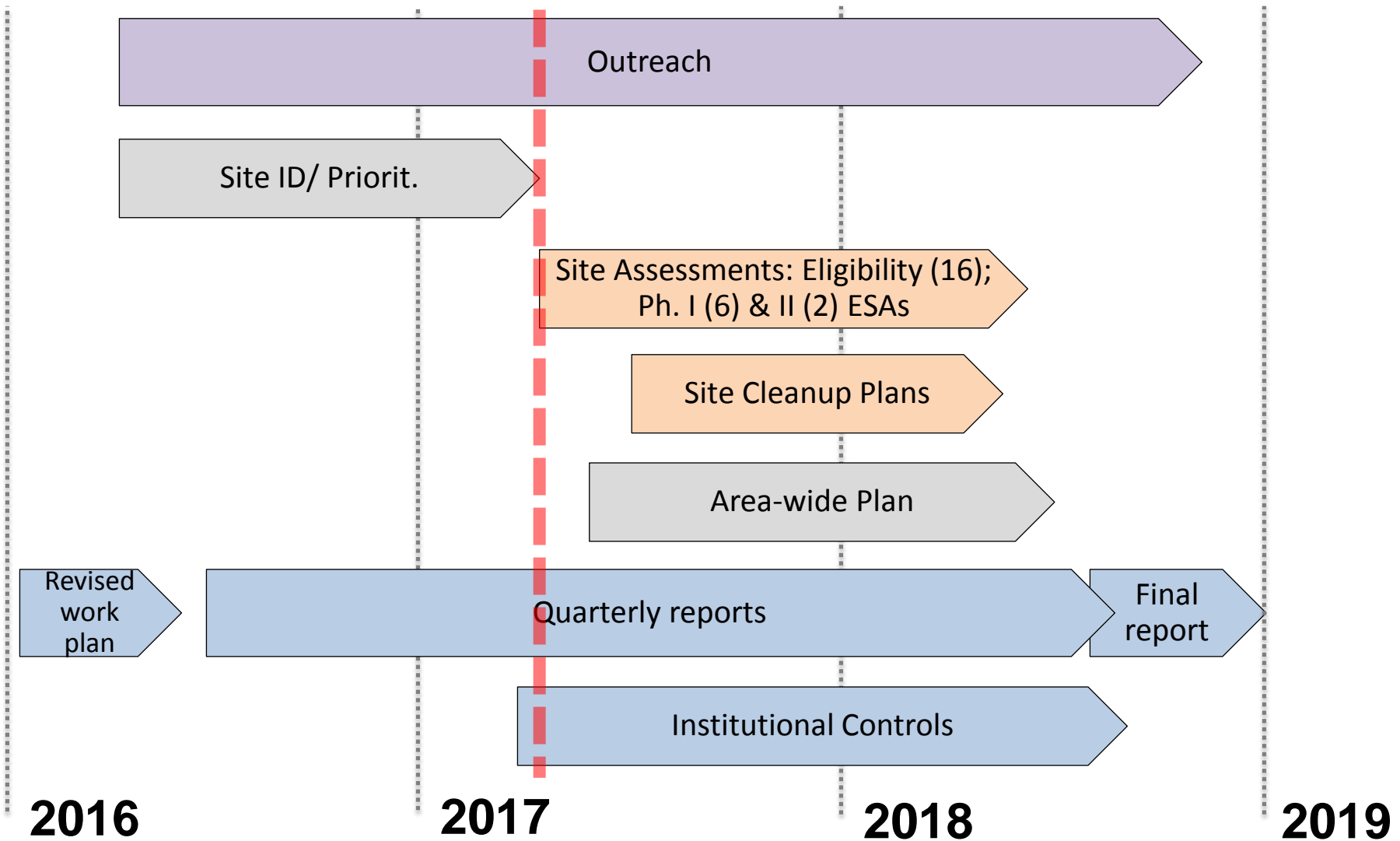
- ✓ Private land
(to be transferred)
- ✓ Tribal land
- ✓ State/local gov't.
land
- ✗ Listed or proposed
"Superfund" site;
- ✗ Subject to court
order/ decree
under CERCLA;
- ✗ Controlled by US
government*

* Unless held in trust for an Indian Tribe

Cleanup and Reuse Process



Brownfields Project Schedule



- Local brownfields history
- Key land use policies, plans, market considerations
- List all brownfields ID'ed & assessed
- Recommend funding & implementation activities

Area-wide Planning – Outreach Process

- Internal/admin. → explain project, solicit contextual info.
- Community input → Site-specific info., values & priorities for reuse/redevel.
- Write Area-Wide Brownfields Plan
- ID opportunities to implement Plan

Spring → Summer

- Such as:
 - Deed, zoning restrictions
 - Permits & site BMPs
 - CEQA review
 - HazMat disposal
- Use to:
 - Incorp. ESA's into existing databases
 - Address in Site Cleanup Plans
 - Support area-wide planning

- Need local knowledge & contacts
- Participation & access are voluntary
- Assess now, cleanup next
- Assessments are free
- Results are public (but not publicized)
- NOT a regulatory program



How would you like to be involved?

- Check out our website:
(www.westsideirwmbrownfields.org)
- Join our listserv (via website)
- Support the IRWM Coordinating Committee
- ***Provide additional site info. & referrals***

*Contact us to get involved
or for more information!*

Stephen McCord

McCord Environmental, Inc.

sam@mccenv.com

530-220-3165

www.mccenv.com



Danielle Dolan

Local Government Commission

ddolan@lgc.org

916-448-1198 ext.311

www.lgc.org



Local Government Commission
Leaders for Livable Communities

www.WestsideIRWMBrownfields.org