

Town of Yountville Measure A Flood Control Projects



Town of Yountville
"The Heart of the Napa Valley"

Presented by:
Joe Tagliaboschi, Public Works Director



**Hopper Creek Bank Erosion –
French Laundry Gardens Downstream of Highway 29**

Measure A Goals for The Town of Yountville



- **Flood Protection for the Town's mobile home parks and surrounding areas.**
- **Hopper Creek, Villagio Channel and Beard Ditch improvements and restoration for flood protection.**

Protecting Mobile Home Parks



December 2005 flood looking southeast toward Napa River

Protecting Mobile Home Parks



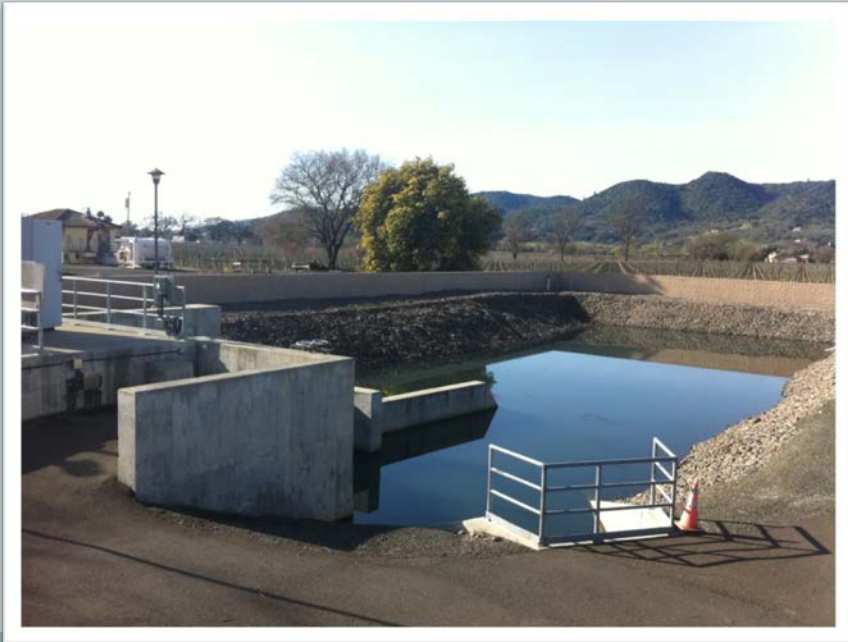
- Floodwall constructed in 2005 – financed with a combination of Town Funds, grant money and Measure A funding.



Protecting Mobile Home Parks



- Partially financed through bank lease purchase agreement which will be repaid in full February 2018, at the same time the flood tax sunsets.



Floodwall Lease – Lowered Interest Rate



- Floodwall Lease Purchase – part fixed interest rate and part variable interest rate.
- Variable rate scheduled to reset to an indexed rate 2/1/2014.
- Negotiated new fixed rate with bank for remainder of the lease – lowering rate by 1% from 2.95% to 1.95%.
- This will save approximately \$20,000 over the remainder of the lease – freeing those funds up to be used for approved projects.

Flood Protection - Hopper Creek, Villagio Channel & Beard Ditch



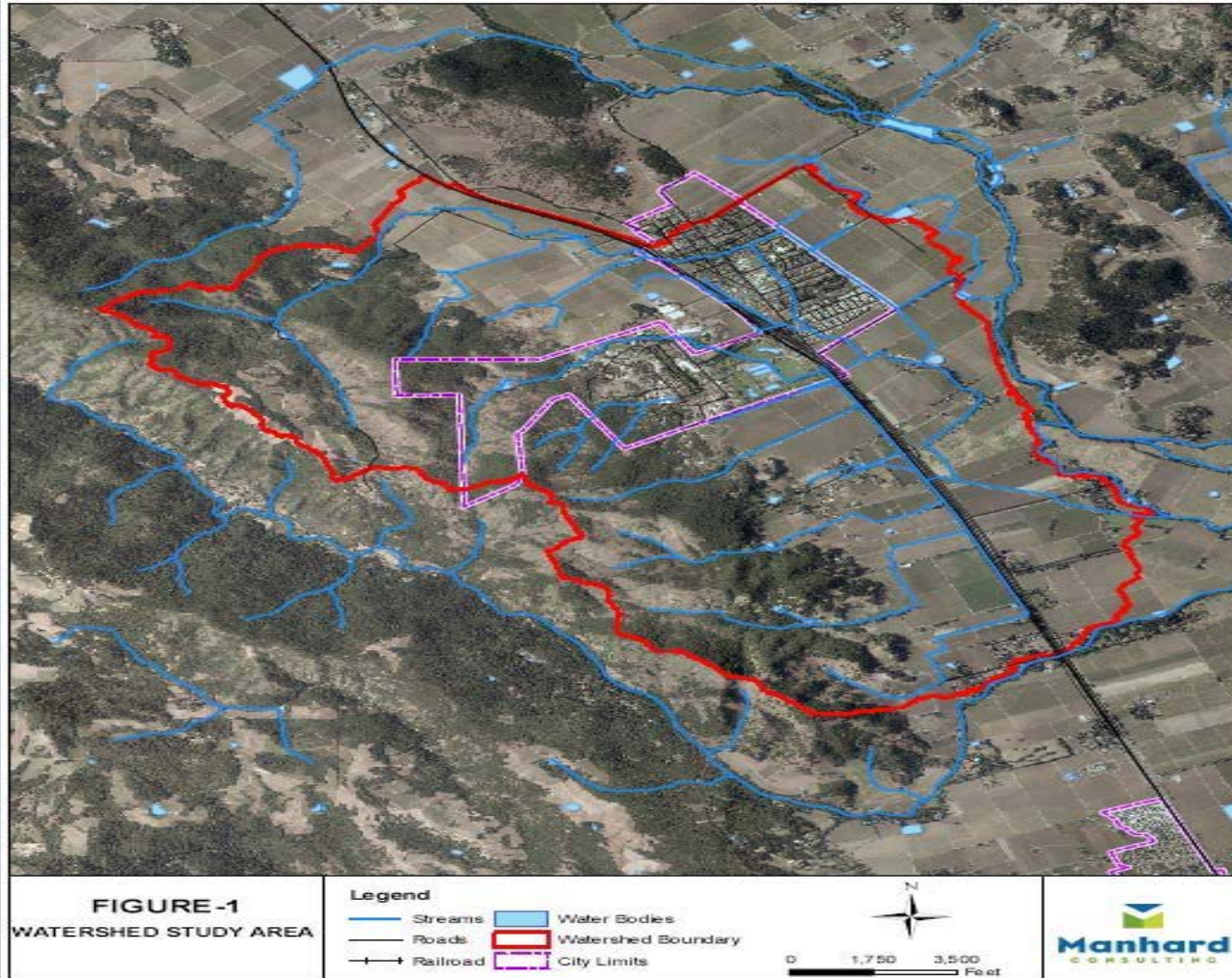
Beard Ditch Bank Repair Completed in 2012

Flood Protection - Hopper Creek & Beard Ditch



- Hydrologic / Hydraulic Study of Hopper & Hinman Creeks Phase II – Alternatives Analysis completed in 2011.
- Study area – 8.49 square miles of watershed.
- Developed detailed, calibrated model to conduct analyses.
- Results used to prioritize projects by ranking alternatives by cost per total reduction in peak outflow.

Watershed Study Area



Flooding on Mulberry Street



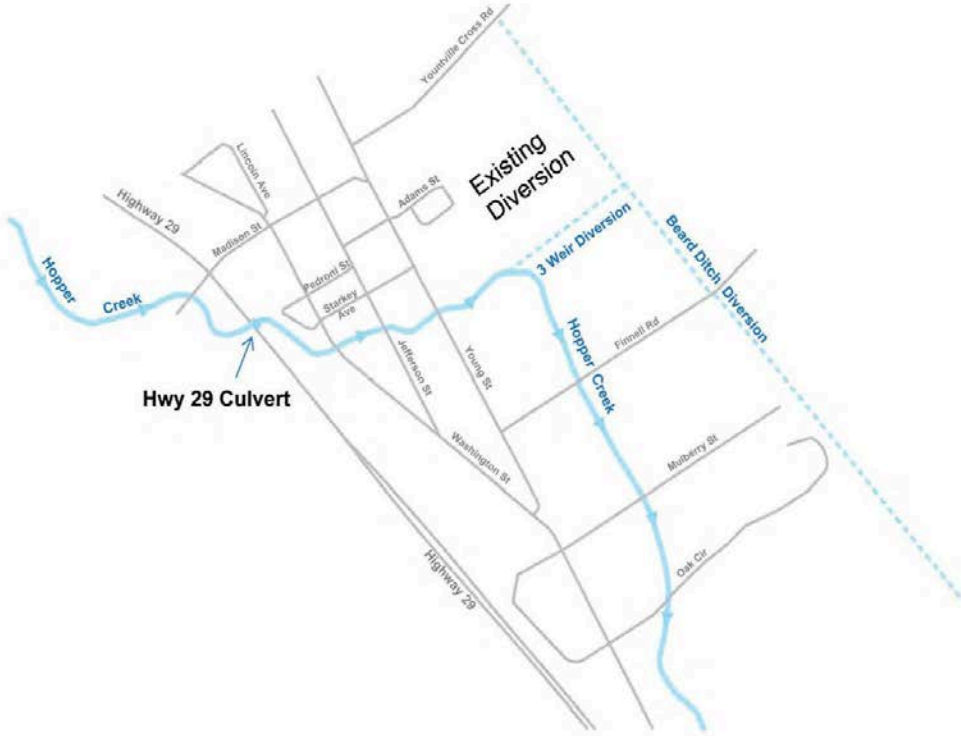
Oak Circle



Flooding on Oak Circle



Map of Project Area



Town of Yountville
Hopper Creek Improvements

Job Number | 0410290
Revision | 4
Date | 05 Jul 2015

Overall Site Reference

Figure 1

0:0227 - The Town of Yountville 2201-0410290 Hopper Creek Improvements Technical Work/Hopper Creek/Plan 2 Hopper Creek/Plan 2
2201-0410290-0410290 Hopper Creek Improvements Technical Work/Hopper Creek/Plan 2 Hopper Creek/Plan 2
0:0227 - The Town of Yountville 2201-0410290 Hopper Creek Improvements Technical Work/Hopper Creek/Plan 2 Hopper Creek/Plan 2

2201-0410290-0410290 Hopper Creek Improvements Technical Work/Hopper Creek/Plan 2 Hopper Creek/Plan 2
2201-0410290-0410290 Hopper Creek Improvements Technical Work/Hopper Creek/Plan 2 Hopper Creek/Plan 2
2201-0410290-0410290 Hopper Creek Improvements Technical Work/Hopper Creek/Plan 2 Hopper Creek/Plan 2

Finnell Storm Drain



<p>Paper Size 11" x 17" (ANSI B)</p> <p>0 50 100 Feet</p> <p>Map Projection: Lambert Conformal Conic National Grid: NAD 1983 GCSNAD 1983 StatePlane California II FIPS 4602 F: US</p>	<p>LEGEND</p> <p>— (N) 3'x5' RCB</p> <p>— Sanitary Sewer</p>	<p>GHD</p>	<p>Town of Yountville Hopper Creek Improvements</p> <p>Finnell Storm Drain (HOP - 5)</p>	<p>Job Number 8410290 Revision A Date 06 Jul 2013</p>
---	---	-------------------	---	---

2235 Mercury Way Suite 150 Santa Rosa CA 95407 USA T 707 523 1010 F 707 527 8078 E santarosa@ghd.com W www.ghd.com

Figure 2

Hopper Creek at Finnell





Hopper Creek at Finnell Weir

January 2017



Hopper Creek at 3 Weirs December 2014



Hopper Creek at Mallard Cove



Mallard Cove Spring 2017



Measure A
Financial Oversight Committee
August 11, 2015



Town of Yountville

"The Heart of the Napa Valley"



**COMMENTS
OR
QUESTIONS?**