



SB 552 Overview

January 26, 2023

Napa County Meeting



CALIFORNIA DEPARTMENT OF
WATER RESOURCES

<https://water.ca.gov/Programs/Water-Use-And-Efficiency/SB-552>

Recent History

- 2012-2016 Drought → AB 1668 & SB 606
- DWR hosted process focused on small water suppliers and rural communities (County Drought Advisory Group, CDAG)
 - Vulnerability scoring and tool
 - Develop recommendations on how to cover them with water shortage contingency plans

**Small Water Systems and Rural Communities
Drought and Water Shortage Contingency Planning
and Risk Assessment**

Part 1 – Recommendations for Drought and
Water Shortage Contingency Plans

**REPORT PURSUANT TO
SECTION 10609.42 OF THE CALIFORNIA WATER CODE
March 2021**



CDAG's recommendations informed SB 552.



SB 552 Summary: New Requirements

Small Water Suppliers*

- 1,000-2,999 connections + schools: Water shortage contingency plan (by July 2023)
- <1,000 connections: Drought assessment/element for 15-999 connections into Emergency Response Plan or Emergency Notification Plan
- All Small Suppliers: Supply conditions & production annual reporting
- All Small Suppliers: Drought resiliency standards – infrastructure upgrades

Counties

- Create a standing County Drought & Water Shortage Task Force for state smalls and domestic wells (or similar alternative)
- Develop County Drought Plan (including risk assessment) for state smalls and domestic wells in the county (or similar alternative)

← **FOCUS OF THIS WORKSHOP**

State

- Water Shortage Vulnerability Tool (small suppliers, private supplied homes and state small systems 5-15 connections)
- Establish Standing Interagency Drought & Water Shortage Task Force (with local government and stakeholder membership)

**Includes community water systems serving less than 3,000 connections and 3,000 acre-feet. Includes non-transient, non-community water systems that are schools; excludes those covered under the requirements of Urban Water Management Plan*



SB 552 Summary: New Requirements for Counties

Counties

- Create a standing Drought & Water Shortage Task Force for state smalls and domestic wells (or similar alternative)
- Develop County Drought Plan for state smalls and domestic wells in the county (or similar alternative)

Purpose: To facilitate drought and water shortage preparedness for state small water systems and domestic wells within the county's jurisdiction

Flexible format: A stand-alone plan or integrated as part of existing (or new) county plans



County Drought Plan Elements

Plan elements must include:

- Potential drought and water shortage risk
- Proposed interim and long-term solutions for state smalls and domestic wells in the county

Consider at a minimum:

- **Consolidations** for existing water systems and domestic wells
- Domestic well drinking water **mitigation programs**
- **Provision of emergency and interim drinking water solutions**
- An analysis of the **steps necessary to implement** the plan
- An analysis of **funding sources** available to implement the plan



County Drought Resilience Plan Guidebook Content



Chapter 1: Introduction – Provides an overview of how counties obtained the responsibility of facilitating drought and water shortage planning for state small water systems and domestic wells.



Chapter 2: County Drought and Water Shortage Task Force – Describes the SB 552 requirements for establishing a county drought and water shortage task force.



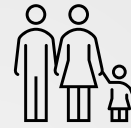
Chapter 3: Drought and Water Shortage Risk Assessment – Provides guidance on how to complete a vulnerability assessment that is geared towards informing short-term response actions and long-term mitigation actions.



Chapter 4: Short-Term Response Actions – Provides guidance on what counties may do to mitigate impacts during the early stages of drought and during ongoing drought conditions in areas that have had wells gone dry or are susceptible to water shortages.



Chapter 5: Long-term Mitigation Strategy and Actions – Provides guidance on what counties may pursue in the long-term to secure reliable water supplies for state small water systems and domestic wells.



Chapter 6: Public Outreach, Information, and Engagement – Provides guidance on practices for counties to conduct adequate public outreach and education as they develop and implement their County Drought Resilience Plan.



Chapter 7: Implementation Considerations – Provides guidance on the development, implementation, and maintenance of the County Drought Resilience Plan.



Chapter 8: Glossary – Provides definitions of key terms used within the Guidebook.



Chapter 9: References – Provides summary of references used in the development of the Guidebook.



Stakeholder Feedback

Workgroup:

- Held 4 meetings to solicit feedback on Guidebook Development and leverage the local perspective

Public Meetings:

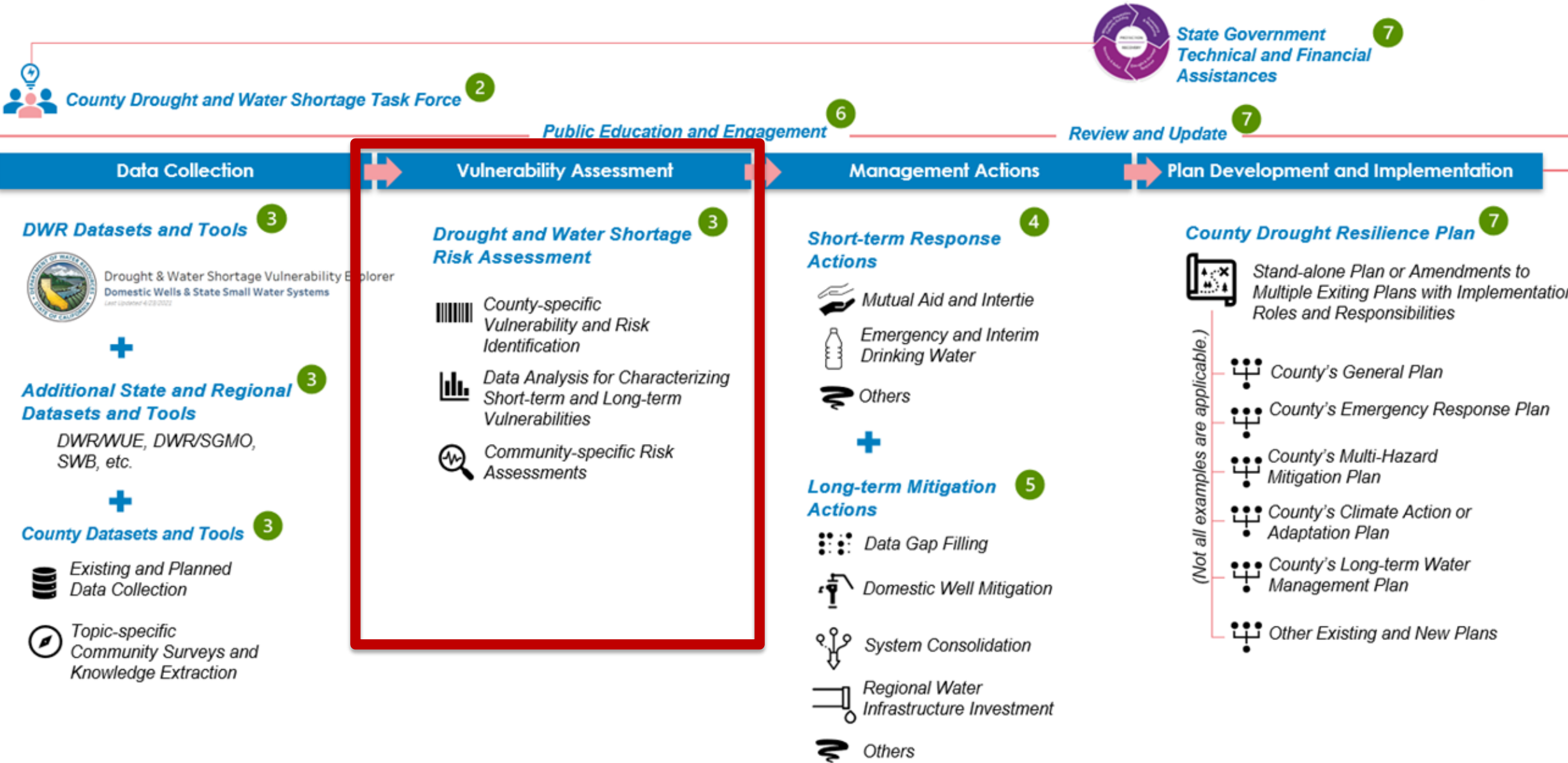
- Held 4 meetings to solicit public feedback on the Guidebook Development

1. **Central Coast**
 - Santa Cruz
 - San Luis Obispo
2. **Colorado River**
 - San Bernardino
3. **North Coast**
 - Humboldt
4. **North Lahontan**
 - El Dorado
5. **Sacramento River**
 - Butte County
 - Lake County
6. **San Francisco Bay**
 - Napa
7. **San Joaquin River**
 - Toulumne
8. **South Coast**
 - Los Angeles
9. **South Lahontan**
 - Inyo
10. **Tulare Lake**
 - Tulare



General Workflow for the County Drought Resilience Plan Development and Implementation

Facilitate drought and water shortage preparedness for state small water systems and domestic wells within the county's jurisdiction.



DWR Datasets and Tools

Drought & Water Shortage Vulnerability Explorer
Domestic Wells & State Small Water Systems
Last updated 4/23/2022

Additional State and Regional Datasets and Tools

DWR/WUE, DWR/SGMO, SWB, etc.

County Datasets and Tools

Existing and Planned Data Collection

Topic-specific Community Surveys and Knowledge Extraction

Drought and Water Shortage Risk Assessment

- County-specific Vulnerability and Risk Identification
- Data Analysis for Characterizing Short-term and Long-term Vulnerabilities
- Community-specific Risk Assessments

Short-term Response Actions

- Mutual Aid and Intertie
- Emergency and Interim Drinking Water
- Others

Long-term Mitigation Actions

- Data Gap Filling
- Domestic Well Mitigation
- System Consolidation
- Regional Water Infrastructure Investment
- Others

County Drought Resilience Plan

Stand-alone Plan or Amendments to Multiple Existing Plans with Implementation Roles and Responsibilities

- County's General Plan
- County's Emergency Response Plan
- County's Multi-Hazard Mitigation Plan
- County's Climate Action or Adaptation Plan
- County's Long-term Water Management Plan
- Other Existing and New Plans

County Drought Resilience Plan Elements

Plan elements must include:

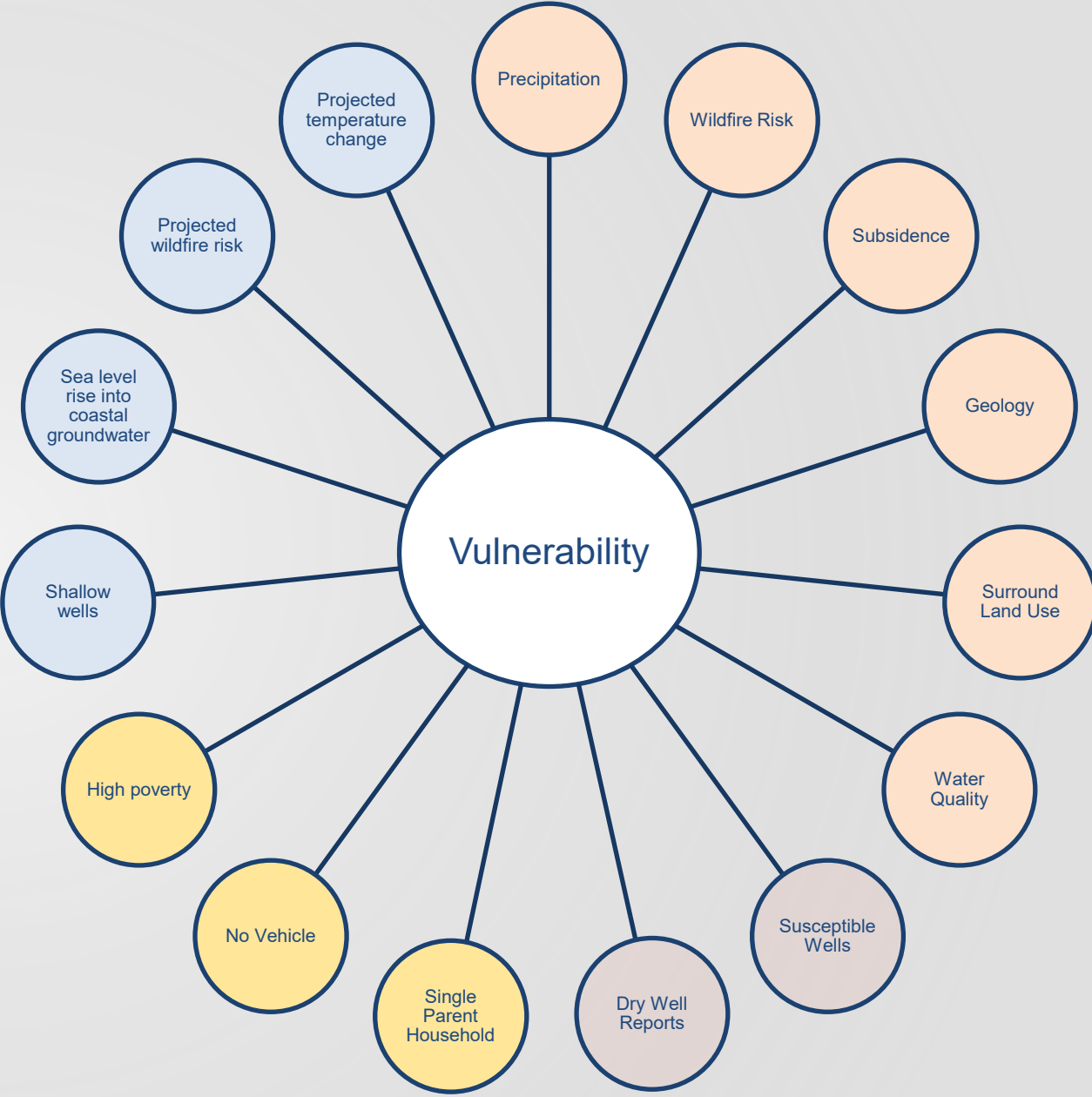
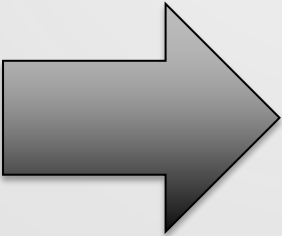
- Potential drought and water shortage risk
- Proposed interim and long-term solutions for state smalls and domestic wells in the county

Consider at a minimum:

- **Consolidations** for existing water systems and domestic wells
- Domestic well drinking water **mitigation programs**
- **Provision of emergency and interim drinking water solutions**
- An analysis of the **steps necessary to implement** the plan
- An analysis of **funding sources** available to implement the plan



Holistic Scope: Developing Indicators



Social Vulnerability

Social Vulnerability Indicators

Socio-Economic Status

- Median Household Income
- Per capita income
- Percent under poverty level

Household Composition and Language

- Percent 65 years and over
- Percent under 5 years
- Percent single parent households
- Percent of unemployment among employable age
- Percent without a high school degree among those over 25 years
- Percent of population who speak less English less than very well

Housing & Transportation

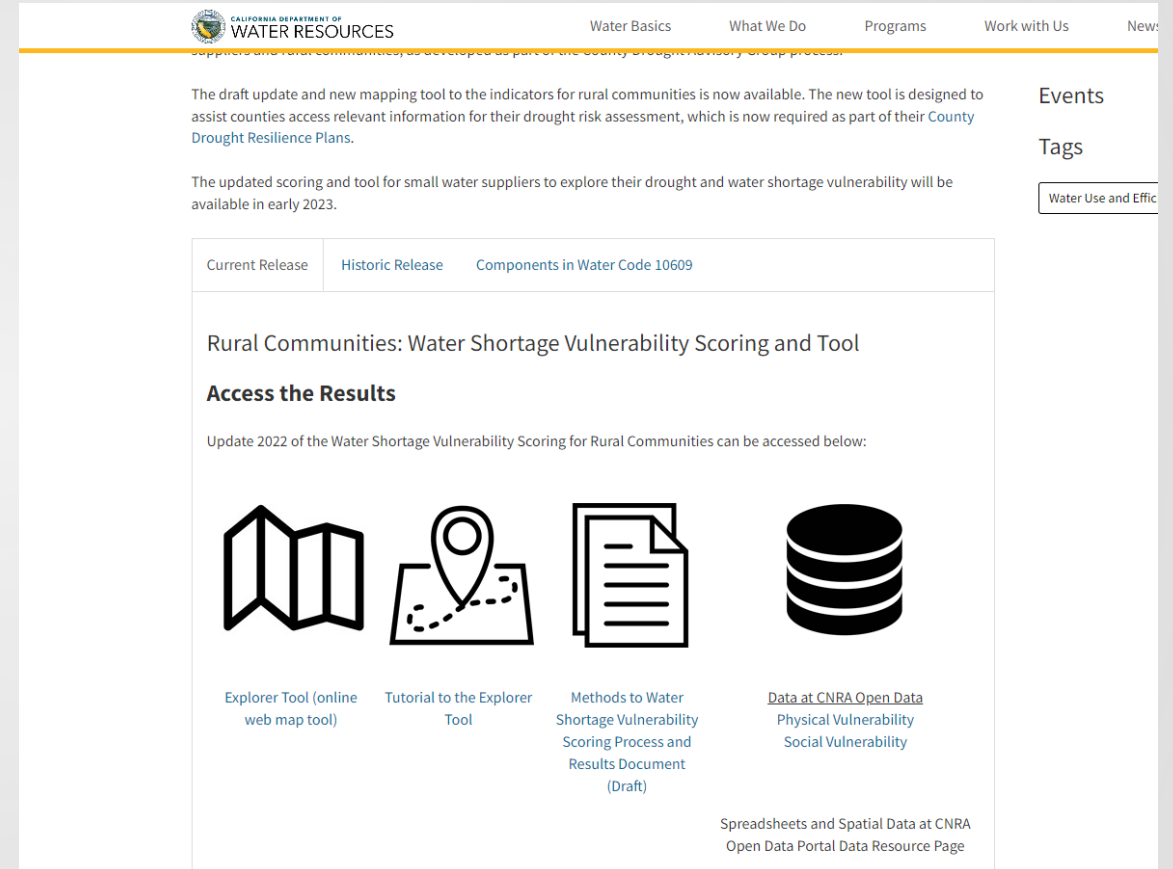
- Percent of households with no vehicle
- Percent living in group quarters
- Percent renters
- Percent living in mobile homes

Combined as single Social Vulnerability Index and to be offered individually



Tool to Explore and Access Data

- <https://water.ca.gov/Programs/Water-Use-And-Efficiency/SB-552/SB-552-Tool>



The screenshot shows the California Department of Water Resources website. The header includes the department logo and navigation links: Water Basics, What We Do, Programs, Work with Us, and News. The main content area features a news item titled "Rural Communities: Water Shortage Vulnerability Scoring and Tool" with a sub-heading "Access the Results". Below this, there are four icons representing different resources: a map for the Explorer Tool, a location pin for a tutorial, a document for methods to water shortage vulnerability scoring, and a database icon for data at CNRA Open Data. A sidebar on the right contains "Events" and "Tags" sections, with "Water Use and Efficiency" listed under tags. At the bottom right, there is a link to "Spreadsheets and Spatial Data at CNRA Open Data Portal Data Resource Page".

CALIFORNIA DEPARTMENT OF WATER RESOURCES

Water Basics What We Do Programs Work with Us News

The draft update and new mapping tool to the indicators for rural communities is now available. The new tool is designed to assist counties access relevant information for their drought risk assessment, which is now required as part of their County Drought Resilience Plans.

The updated scoring and tool for small water suppliers to explore their drought and water shortage vulnerability will be available in early 2023.

Current Release Historic Release Components in Water Code 10609

Rural Communities: Water Shortage Vulnerability Scoring and Tool

Access the Results

Update 2022 of the Water Shortage Vulnerability Scoring for Rural Communities can be accessed below:

- Explorer Tool (online web map tool)
- Tutorial to the Explorer Tool
- Methods to Water Shortage Vulnerability Scoring Process and Results Document (Draft)
- Data at CNRA Open Data Physical Vulnerability Social Vulnerability

Spreadsheets and Spatial Data at CNRA Open Data Portal Data Resource Page

Events

Tags

Water Use and Efficiency





Water Shortage Vulnerability

(State Smalls and Domestic Wells Analysis)

Filter

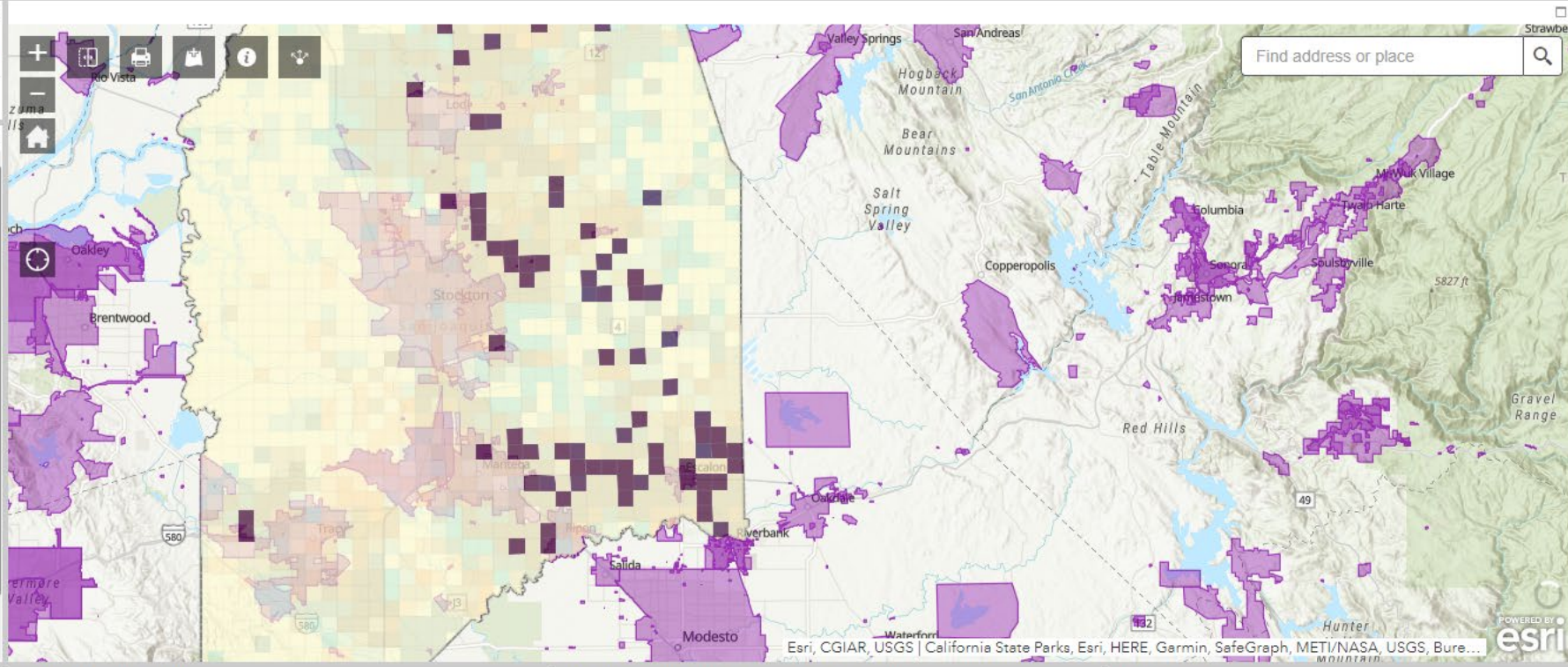
Filter sections with domestic wells and state smalls (total score layer only)

Reference Layers Observed Shortage Social Vulnerability Total Score

Layers

- Domestic Wells (GW Live)
- State Smalls
- Water Shortage Vulnerability Total Score (Sections)
- Water Shortage Vulnerability Total Score by Domestic Wells
 - Relationship: Total Score Domestic Well Count
 - Opacity: Opaque Transparent
 - Transparency:
 - Set visibility range:
 - Disable pop-up:
 - Move up:
 - Move down:

High - High
High - Low Low - High
Low - Low



County Filter

Filter by County:

State Small Water Systems

State Smalls

27

Description: number of state small water systems in the filtered area

Vulnerability Score Average Vulnerability Histogram

Vulnerability Score

34.01

Description: average total vulnerability score for the filtered area.

Domestic Wells

Domestic Wells

7,867

Description: number of domestic wells in the filtered area





Water Shortage Vulnerability

(State Smalls and Domestic Wells Analysis)

SB-552 Information Explorer Tutorial CA Water Watch CA Groundwater Live Download Sections Data Download Block Groups Data

Filter

Filter sections with domestic wells and state smalls (total score layer only)

Reference Layers

Observed Shortage Social Vulnerability Total Score

Layers

- Domestic Wells (GW Live)
- State Smalls
- Water Shortage Vulnerability Total Score (Sections)
- Water Shortage Vulnerability Total Score by Domestic Wells

Relationship

Total Score

Domestic Well Count

High - High

High - Low

Low - High

Low - Low

Opacity

Transparent

0% 50% 100%

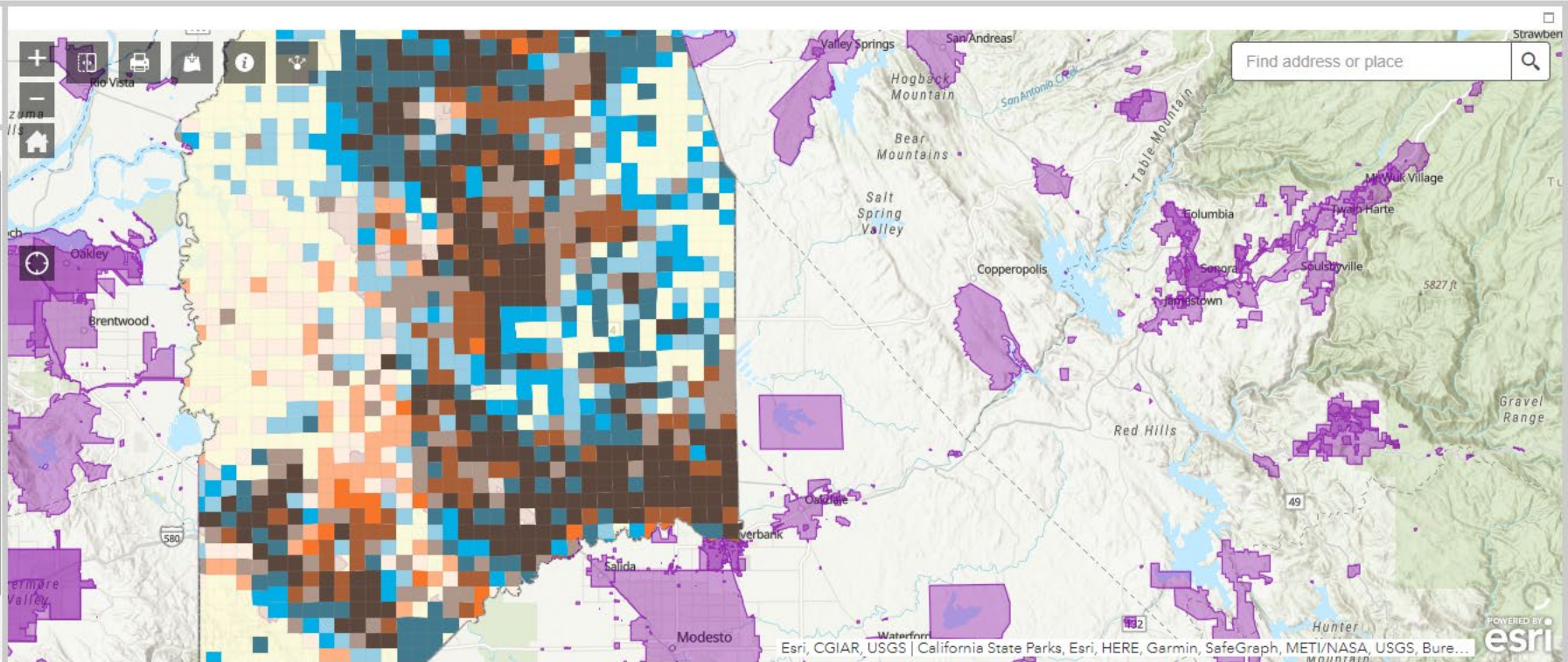
Transparency

Set visibility range

Disable pop-up

Move up

Move down



County Filter

Filter by County:

EQUALS

San Joaquin

Add Criteria

Apply

Reset

State Small Water Systems

State Smalls

27

Description: number of state small water systems in the filtered area

Vulnerability Score Average

Vulnerability Score

34.01

Description: average total vulnerability score for the filtered area.

Domestic Wells

Domestic Wells

7,867

Description: number of domestic wells in the filtered area



Upcoming State Support for Drought Planning (SB 552)

- A. Guidebook + Data Mapping Tool final
- B. Trainings by plan topic + for tool (zoom & YouTube)
- C. Two options for counties – one **or** the other:
 - 1- Planning grant
 - 2- Direct assistance
- D. Online portal to submit County DRP – *anticipated March 2023*
- E. Host share space for counties to learn from one another (*in development*)

To join email list of
announcements related to
SB 552

