



Board of Directors

Diane Dillon  
Mark Luce  
Del Britton  
Gary Kraus  
James Krider  
Leon Garcia  
Richard Hall\*  
Mike Basayne  
Jeff Reichel  
Rita Steiner\*  
Jeffrey Redding  
Susan Boswell  
Jim Lincoln  
Marc Pandone  
Chris Sauer  
Mitchell Klug  
Jason Lauritsen

\*Pending Appointment

Alternate

Keith Caldwell

Staff

Representatives

Patrick Lowe,  
**Secretary**  
Deputy Director,  
CDPD

Jeff Sharp,  
**Watershed  
Coordinator**  
Principal Planner,  
CDPD

Laura Anderson,  
**Legal Counsel**  
Attorney IV,  
County Counsel's  
Office

Sara Minahen,  
**Admin. Assistant**  
Office Assistant II,  
CDPD

1195 Third Street,  
Suite 210  
Napa, CA  
94559

Tel: 707-253-4417  
Fax: 707-253-4336

www.napawatersheds.org

## AGENDA

### REGULAR BOARD MEETING

Thursday, January 27, 2011, 4:00 p.m.

2nd Floor Conference Room, Hall of Justice Building,  
1125 Third Street, Napa CA

1. **CALL TO ORDER & ROLL CALL** (Chair)

2. **APPROVAL OF ACTION MINUTES**

Meeting of October 28, 2010 (Chair)

3. **PUBLIC COMMENT**

In this time period, anyone may comment to the Board regarding any subject over which the Board has jurisdiction, or request consideration to place an item on a future Agenda. No comments will be allowed involving any subject matter that is scheduled for discussion as part of this Agenda. Individuals will be limited to a three-minute presentation. No action will be taken by the Board as a result of any item presented at this time. (Chair)

4. **DISCUSSION AND ACTION:**

a. **Election of new Chair and Vice-Chair** for year 2011 (per Bylaws§ II.A.) (Board; WICC Staff) (10 min)

b. Discussion and **adoption of 2011 Meeting Calendar** (per Bylaws§ III.A.) (Board; WICC Staff) (5 min)

(Cont.)

## 5. PRESENTATIONS, DISCUSSIONS AND UPDATES:

Informational presentations and updates for discussion (50 min.)

- a. Presentation and discussion on “Downscaling Future Climate Projections to the Watershed Scale – A North San Francisco Bay Estuary Case Study.” A look at projected precipitation and air temperature values derived from global General Circulation Models (GCMs) at a watershed scale to estimate monthly hydrologic responses to climate changes under four scenarios spanning the next century (Lisa Micheli, Executive Director, Pepperwood Inst.) (25 min)
- b. Update on status of County Climate Action Plan (Steve Lederer, Dir. of Environmental Mngmt., Hillary Gitelman, Dir. of Conservation, Devel. & Planning) (5 min)
- c. Presentation and discussion on “Streamgaging in Napa County.” The importance of gauging streams, methods used, and update on local streamgaging efforts (Paul Blank, Hydrologist, Napa County Resource Conservation Dist.) (20 min)

## 6. REPORTS, UPDATES AND DISCUSSION:

Informational reports and updates for discussion, presented by staff, members of the board and invited public (WICC Staff; Board, Others) (30 min.)

- a. Report on upcoming Board of Supervisors’ Groundwater Workshop planned for Monday February 14<sup>th</sup> at Napa City/County Library Community Room (WICC Staff)
- b. Update on Integrated Regional Water Management Planning (IRWMP) efforts, \$1.5M planning grant to include the Putah Creek/Berryessa basin (Westside Sacramento River Funding Area), and planning and implementation work relative to the Napa River and Suisun Creek basins (SF Bay Area Funding Region) (WICC Staff/PW/Fld Dist.)
- c. Update on Regional Water Quality Control Board development of grazing and vineyard waste discharge requirement (WDR) waiver programs for the Napa River watershed to assist landowner compliance with the Napa River Sediment and Pathogen Total Maximum Daily Loads (TMDL) and other regional and state policies (WICC Staff)
- d. Report on Countywide Stormwater Program and update new water quality monitoring requirements for construction projects in the Napa River watershed (Jack Betourne, Stormwater Prog. Manager, Flood Dist.)

- e. Update on this year's watershed education calendar, "Celebrating Napa County's Watersheds 2011" (WICC Staff/Napa County RCD)
- f. Update and discussion on Napa County 2011 Watershed Symposium, planned for Thursday May 19<sup>th</sup> (WICC Staff/Napa County RCD)
- g. Update on Earth Day celebration planned for Saturday April 23<sup>rd</sup>, and event planning related to this year's Napa River theme (Napa County Env. Education Coalition)
- h. Other reports and updates (WICC Staff, Board, Public)

7. **ANNOUNCEMENTS:**

Informational announcements presented by staff, members of the board and public (WICC Staff; Board, Others)

8. **FUTURE AGENDA ITEMS** (Board; WICC Staff)

9. **NEXT MEETINGS** (Chair)

Regular Scheduled Board Meetings:

February 24, 2010 – 4:00 PM (*Possible postponement*)

March 24, 2010 – 4:00 PM (*Save the date*)

Location:

Hall of Justice Building, 2<sup>nd</sup> floor Conference Room, 1125 Third Street, Napa

10. **ADJOURNMENT** (Chair)

**Note:** If requested, the agenda and documents in the agenda packet shall be made available in appropriate alternative formats to persons with a disability. Please contact Jeff Sharp at 707-259-5936, 1195 Third St., Suite 210, Napa CA 94559 to request alternative formats.





A Tradition of Stewardship  
A Commitment to Service



# 2011 Meeting Calendar

*"To educate and support community efforts to maintain and improve the health of Napa County's watershed lands"*

**Members:**

- Diane Dillon
- Mark Luce
- Del Britton
- Jim Krider
- Gary Kraus
- Leon Garcia
- Richard Hall
- Mike Basayne
- Rita Steiner
- Jeff Reichel
- Mitchell Klug
- Jeffrey Redding
- Jim Lincoln
- Susan Boswell
- Marc Pandone
- Chris Sauer
- Jason Lauritsen

**Alternate:**

Keith Caldwell

**Staff:**

Patrick Lowe,  
Secretary  
Deputy Director, CDPD

Jeff Sharp,  
Watershed Coordinator  
Principal Planner, CDPD

Laura Anderson,  
Legal Counsel  
County Counsel's Office

Sarah Minahen  
Admin. Assistant  
Office Assistant II, CDPD

**Meeting Details**

**Time:** 4:00 PM

**Location:**  
Second Flr. Conf. Rm., Hall of Justice  
Building, 1125 Third St., Napa CA

*These are public meetings,  
all are welcome to attend.*

*Time and location may change as  
directed by the Board.*

**January**

S	M	T	W	T	F	S
						1
2	3	4	5	6	7	8
9	10	11	12	13	14	15
16	17	18	19	20	21	22
23	24	25	26	27	28	29
30	31					

**February**

S	M	T	W	T	F	S
			1	2	3	4
5	6	7	8	9	10	11
12	13	14	15	16	17	18
19	20	21	22	23	24	25
26	27	28				

**March**

S	M	T	W	T	F	S
				1	2	3
4	5	6	7	8	9	10
11	12	13	14	15	16	17
18	19	20	21	22	23	24
25	26	27	28	29	30	31

**April**

S	M	T	W	T	F	S
					1	2
3	4	5	6	7	8	9
10	11	12	13	14	15	16
17	18	19	20	21	22	23
24	25	26	27	28	29	30

**May**

S	M	T	W	T	F	S
			1	2	3	4
5	6	7	8	9	10	11
12	13	14	15	16	17	18
19	20	21	22	23	24	25
26	27	28	29	30	31	

**June**

S	M	T	W	T	F	S
				1	2	3
4	5	6	7	8	9	10
11	12	13	14	15	16	17
18	19	20	21	22	23	24
25	26	27	28	29	30	

**July**

S	M	T	W	T	F	S
					1	2
3	4	5	6	7	8	9
10	11	12	13	14	15	16
17	18	19	20	21	22	23
24	25	26	27	28	29	30
31						

**August**

S	M	T	W	T	F	S
			1	2	3	4
5	6	7	8	9	10	11
12	13	14	15	16	17	18
19	20	21	22	23	24	25
26	27	28	29	30	31	

**September**

S	M	T	W	T	F	S
					1	2
3	4	5	6	7	8	9
10	11	12	13	14	15	16
17	18	19	20	21	22	23
24	25	26	27	28	29	30

**October**

S	M	T	W	T	F	S
						1
2	3	4	5	6	7	8
9	10	11	12	13	14	15
16	17	18	19	20	21	22
23	24	25	26	27	28	29
30	31					

**November**

S	M	T	W	T	F	S
			1	2	3	4
5	6	7	8	9	10	11
12	13	14	15	16	17	18
19	20	21	22	23	24	25
26	27	28	29	30		

**December**

S	M	T	W	T	F	S
					1	2
3	4	5	6	7	8	9
10	11	12	13	14	15	16
17	18	19	20	21	22	23
24	25	26	27	28	29	30
31						

○ - Regular Meeting Dates

⊙ - Tentative Regular Meeting Dates

# Downscaling future climate projections to the watershed scale: a North San Francisco Bay Estuary case study

Elisabeth Micheli<sup>a</sup>, Lorraine Flint<sup>b</sup>, Alan Flint<sup>b</sup>, Stuart Weiss<sup>c</sup>, Morgan Kennedy<sup>a</sup>

<sup>a</sup> Dwight Center for Conservation Science at Pepperwood, Santa Rosa, CA 95404

<sup>b</sup> U.S. Geological Survey, Sacramento CA 95819

<sup>c</sup> Creekside Center for Earth Observation, Menlo Park CA 94025

REVIEW DRAFT 8 January 2011

## ABSTRACT

We modeled the hydrology of basins draining into the northern portion of the San Francisco Bay Estuary (also known as North San Pablo Bay) using a regional water balance model (Basin Characterization Model; BCM) to estimate impacts of climate change at the watershed scale. The BCM calculates water balance components including runoff, recharge, evapotranspiration, soil moisture, and stream flow based on climate, topography, soils and underlying geology, and the solar-driven energy balance. We downscaled projected precipitation and air temperature values derived from global General Circulation Models (GCMs) to a spatial scale of 270 m and estimated monthly hydrologic response to climate change for four scenarios spanning the next century using the BCM for both historic and projected climate (1896-2100). Historical climate patterns show that Marin's coastal regions are typically on the order of 2 °C cooler and receive five percent more precipitation compared to the inland valleys of Sonoma and Napa due to marine influences and local topography. By the last 30 years of this century, the four scenarios analyzed here for the North Bay study area project average minimum temperatures to increase by 1.0 °C to 3.1 °C and average maximum temperatures to increase by 2.1 °C to 3.4 °C in comparison to conditions experienced over the last 30 years (1981-2010). Precipitation projections for the next century vary between GCMs (ranging from 2 to 15% wetter than the 20<sup>th</sup> century average). Across all scenarios, temperature forcing increases the variability of runoff, recharge, and stream discharge, and shifts hydrologic cycle timing. For both drier and wetter scenarios, warming amplifies climatic water deficit (a measure of drought stress on soils) by 8-21% over the next century. Hydrologic variability within a single river basin demonstrated at the scale of subwatersheds may prove an important consideration for water managers in the face of climate change.

**Key Words:** climate change, watershed hydrology, downscaling, San Pablo Bay, Basin Characterization Model, stream flow, aquifer recharge, climatic water deficit.

## Corresponding Author:

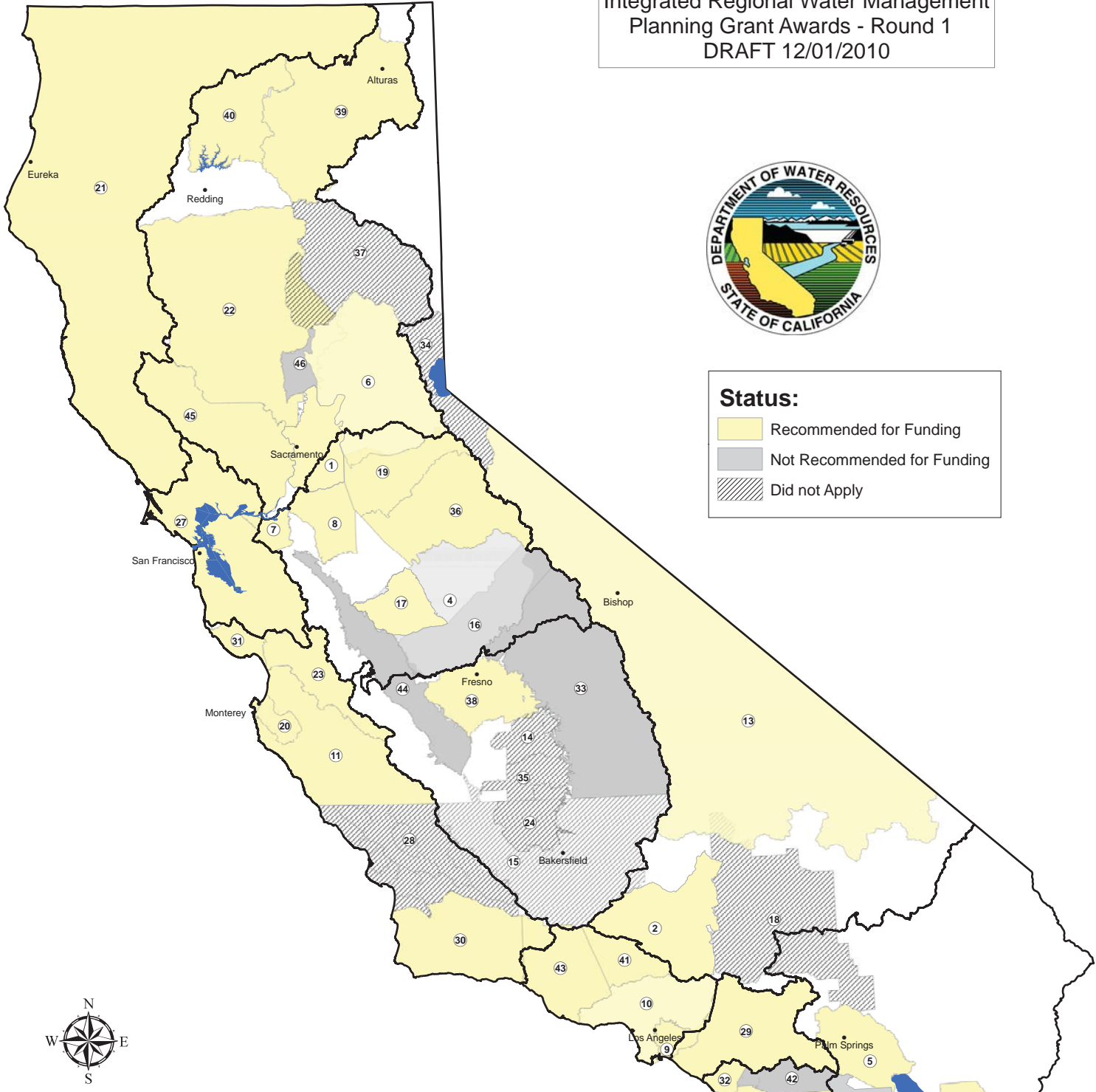
Lisa Micheli, [lmicheli@pepperwoodpreserve.org](mailto:lmicheli@pepperwoodpreserve.org), 707-591-9310 x 203

Integrated Regional Water Management  
 Planning Grant Awards - Round 1  
 DRAFT 12/01/2010



**Status:**

- Recommended for Funding
- Not Recommended for Funding
- Did not Apply

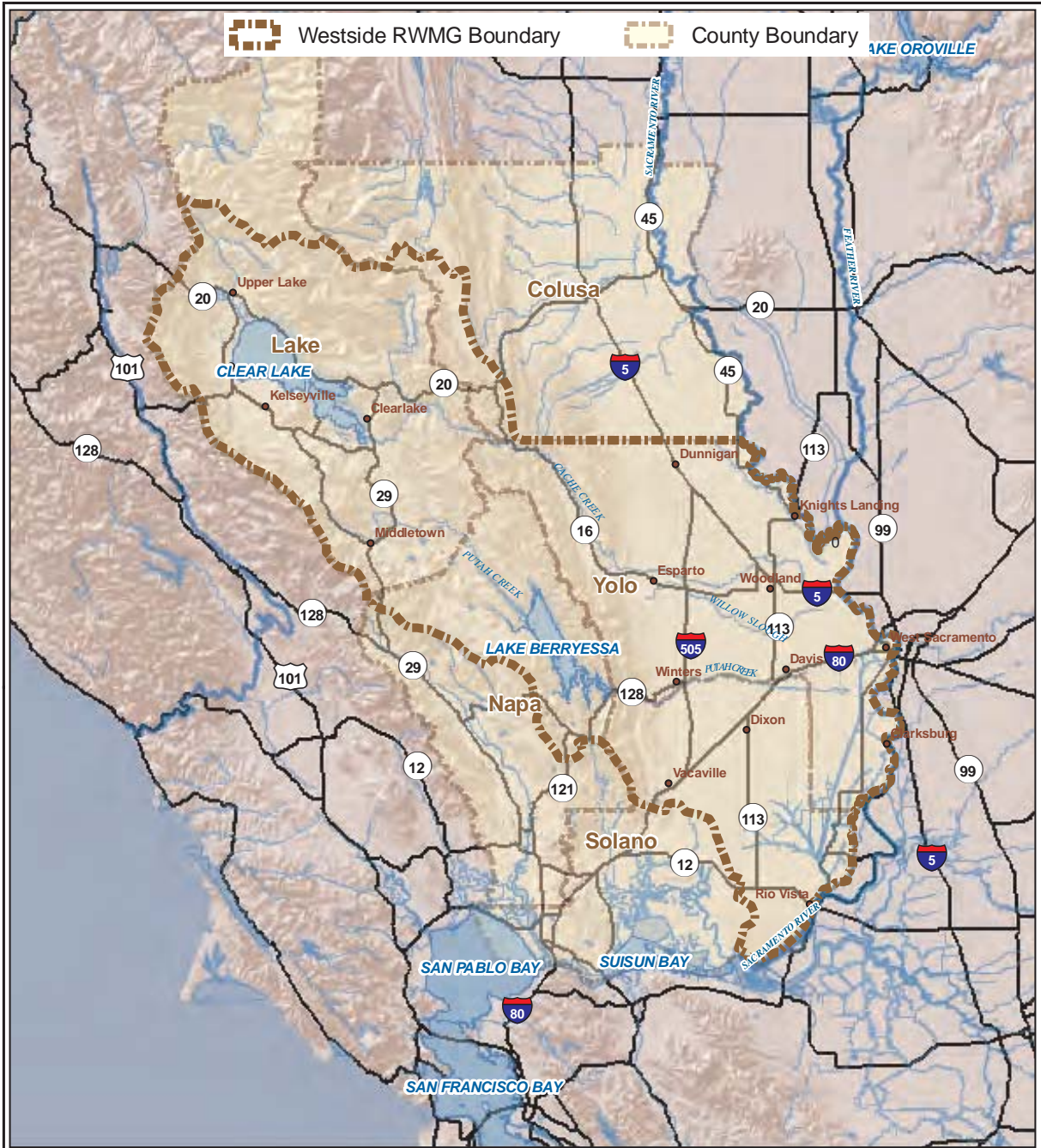


Legend		
<span style="display: inline-block; width: 15px; height: 10px; background-color: blue; border: 1px solid black;"></span> Select Water Bodies	<span style="display: inline-block; width: 15px; height: 10px; background: repeating-linear-gradient(45deg, transparent, transparent 2px, gray 2px, gray 4px); border: 1px solid black;"></span> (15) Kern County*	<span style="display: inline-block; width: 15px; height: 10px; background-color: lightgray; border: 1px solid black;"></span> (33) Southern Sierra*
<span style="display: inline-block; width: 15px; height: 10px; border: 1px solid black;"></span> Prop 84 Funding Area Regions	<span style="display: inline-block; width: 15px; height: 10px; background-color: lightgray; border: 1px solid black;"></span> (16) Madera*	<span style="display: inline-block; width: 15px; height: 10px; background: repeating-linear-gradient(45deg, transparent, transparent 2px, gray 2px, gray 4px); border: 1px solid black;"></span> (34) Tahoe-Sierra
<span style="display: inline-block; width: 15px; height: 10px; background-color: yellow; border: 1px solid black;"></span> (1) American River Basin	<span style="display: inline-block; width: 15px; height: 10px; background-color: yellow; border: 1px solid black;"></span> (17) Merced*	<span style="display: inline-block; width: 15px; height: 10px; background: repeating-linear-gradient(45deg, transparent, transparent 2px, gray 2px, gray 4px); border: 1px solid black;"></span> (35) Tule*
<span style="display: inline-block; width: 15px; height: 10px; background-color: yellow; border: 1px solid black;"></span> (2) Antelope Valley	<span style="display: inline-block; width: 15px; height: 10px; background: repeating-linear-gradient(45deg, transparent, transparent 2px, gray 2px, gray 4px); border: 1px solid black;"></span> (18) Mojave	<span style="display: inline-block; width: 15px; height: 10px; background-color: yellow; border: 1px solid black;"></span> (36) Tuolumne-Stanislous
<span style="display: inline-block; width: 15px; height: 10px; background-color: lightgray; border: 1px solid black;"></span> (3) Anza Borrego Desert	<span style="display: inline-block; width: 15px; height: 10px; background-color: yellow; border: 1px solid black;"></span> (19) Mokelumne/Amador/Calaveras	<span style="display: inline-block; width: 15px; height: 10px; background: repeating-linear-gradient(45deg, transparent, transparent 2px, gray 2px, gray 4px); border: 1px solid black;"></span> (37) Upper Feather River Watershed
<span style="display: inline-block; width: 15px; height: 10px; background-color: lightgray; border: 1px solid black;"></span> (4) Central California*	<span style="display: inline-block; width: 15px; height: 10px; background-color: yellow; border: 1px solid black;"></span> (20) Monterey Peninsula, Carmel Bay, So. Monterey Bay	<span style="display: inline-block; width: 15px; height: 10px; background-color: yellow; border: 1px solid black;"></span> (38) Upper Kings Basin Water Forum
<span style="display: inline-block; width: 15px; height: 10px; background-color: yellow; border: 1px solid black;"></span> (5) Coachella Valley	<span style="display: inline-block; width: 15px; height: 10px; background-color: yellow; border: 1px solid black;"></span> (21) North Coast	<span style="display: inline-block; width: 15px; height: 10px; background-color: yellow; border: 1px solid black;"></span> (39) Upper Pit River Watershed
<span style="display: inline-block; width: 15px; height: 10px; background-color: yellow; border: 1px solid black;"></span> (6) Cosumnes American Bear Yuba	<span style="display: inline-block; width: 15px; height: 10px; background-color: yellow; border: 1px solid black;"></span> (22) Northern Sac Valley - Four County Group*	<span style="display: inline-block; width: 15px; height: 10px; background-color: yellow; border: 1px solid black;"></span> (40) Upper Sacramento-McCloud
<span style="display: inline-block; width: 15px; height: 10px; background-color: yellow; border: 1px solid black;"></span> (7) East Contra Costa County	<span style="display: inline-block; width: 15px; height: 10px; background-color: yellow; border: 1px solid black;"></span> (23) Pajaro River Watershed	<span style="display: inline-block; width: 15px; height: 10px; background-color: yellow; border: 1px solid black;"></span> (41) Upper Santa Clara River
<span style="display: inline-block; width: 15px; height: 10px; background-color: yellow; border: 1px solid black;"></span> (8) Eastern San Joaquin	<span style="display: inline-block; width: 15px; height: 10px; background: repeating-linear-gradient(45deg, transparent, transparent 2px, gray 2px, gray 4px); border: 1px solid black;"></span> (24) Poso Creek*	<span style="display: inline-block; width: 15px; height: 10px; background-color: lightgray; border: 1px solid black;"></span> (42) Upper Santa Margarita
<span style="display: inline-block; width: 15px; height: 10px; background-color: yellow; border: 1px solid black;"></span> (9) Gateway Region	<span style="display: inline-block; width: 15px; height: 10px; background-color: yellow; border: 1px solid black;"></span> (26) San Diego	<span style="display: inline-block; width: 15px; height: 10px; background-color: yellow; border: 1px solid black;"></span> (43) Watersheds Coalition of Ventura County
<span style="display: inline-block; width: 15px; height: 10px; background-color: yellow; border: 1px solid black;"></span> (10) Greater Los Angeles County	<span style="display: inline-block; width: 15px; height: 10px; background-color: yellow; border: 1px solid black;"></span> (27) San Francisco Bay Area	<span style="display: inline-block; width: 15px; height: 10px; background-color: lightgray; border: 1px solid black;"></span> (44) Westside - San Joaquin
<span style="display: inline-block; width: 15px; height: 10px; background-color: yellow; border: 1px solid black;"></span> (11) Greater Monterey County	<span style="display: inline-block; width: 15px; height: 10px; background: repeating-linear-gradient(45deg, transparent, transparent 2px, gray 2px, gray 4px); border: 1px solid black;"></span> (28) San Luis Obispo	<span style="display: inline-block; width: 15px; height: 10px; background-color: yellow; border: 1px solid black;"></span> (45) Westside (Yolo, Solano, Napa, Lake, Colusa)
<span style="display: inline-block; width: 15px; height: 10px; background-color: yellow; border: 1px solid black;"></span> (12) Imperial	<span style="display: inline-block; width: 15px; height: 10px; background-color: yellow; border: 1px solid black;"></span> (29) Santa Ana Watershed Project Authority	<span style="display: inline-block; width: 15px; height: 10px; background-color: lightgray; border: 1px solid black;"></span> (46) Yuba County
<span style="display: inline-block; width: 15px; height: 10px; background-color: yellow; border: 1px solid black;"></span> (13) Inyo-Mono	<span style="display: inline-block; width: 15px; height: 10px; background-color: yellow; border: 1px solid black;"></span> (30) Santa Barbara Countywide	
<span style="display: inline-block; width: 15px; height: 10px; background: repeating-linear-gradient(45deg, transparent, transparent 2px, gray 2px, gray 4px); border: 1px solid black;"></span> (14) Kaweah River Basin*	<span style="display: inline-block; width: 15px; height: 10px; background-color: yellow; border: 1px solid black;"></span> (31) Santa Cruz County	
	<span style="display: inline-block; width: 15px; height: 10px; background-color: yellow; border: 1px solid black;"></span> (32) So. Orange County Watershed Management Area	

\* Denotes Region Conditionally Approved



Notes:  
 1) Numbers shown are for reference purposes only and correspond to internal DWR RAP submittal identifications.  
 2) Region boundaries shown are those submitted by each applicant as submitted to DWR for the 2009 RAP on April 29, 2009, or as revised and submitted to DWR following the 2009 RAP interview (as of November 23, 2009).

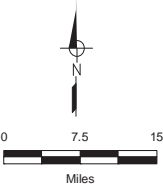


N:\Clients\3591\_WRA of Yolo County\00-10-03\_IRWMP\_Funding - Westside RWMG\GIS\Figures\Fig1 - WestsideRWMG DAC\_Regional\_20100924.mxd 9/27/2010

**FIGURE 1**

**Prop 84 IRWM Planning  
Grant Application**

**WESTSIDE RWMG  
REGION BOUNDARY MAP**



September, 2010

Printed on 50% post-consumer paper



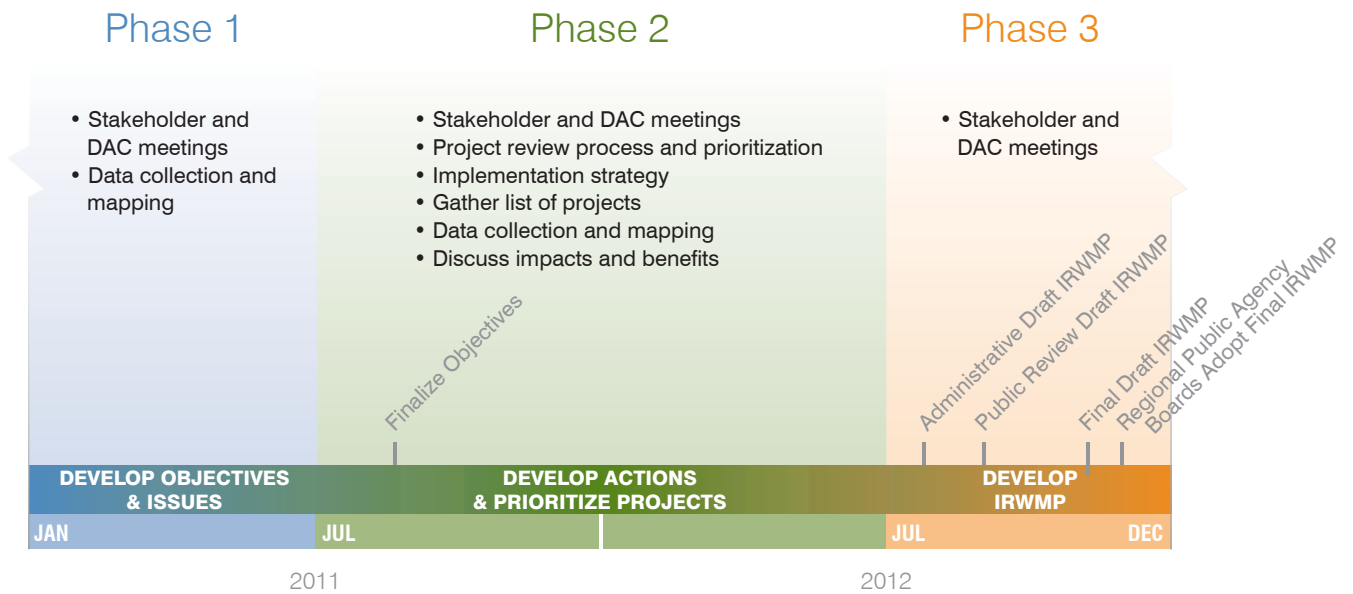
# Schedule Narrative

Scheduling for the Westside RWMG IRWMP will be broken down into three phases as shown in the timeline graphic below (also included in the Work Plan) and in the detailed schedule. The first phase will involve coordination among the Westside RWMG members, DWR, California Native American tribes, stakeholders and disadvantaged communities (DACs). These meetings will involve establishing region-wide objectives. The second phase will consist of using the established objectives from Phase 1 to develop components of the IRWMP and identify projects that will address the region's objectives. Prioritization of projects will also occur during Phase 2 of IRWMP development.

The third and final phase will involve developing an administrative, public review, and final draft of the Westside IRWMP and soliciting public comment. Once the comments are received and addressed, the final draft IRWMP will be prepared and submitted to the Westside RWMG Regional Public Agencies for adoption.

Please note that the start date for the Contract Execution with DWR (Task 5.1) is unrealistic. However, the length of time required for this task is realistic and necessary in order to complete Task 5.2 on time in order to start the IRWMP process by January 17, 2011. Most likely the dates shown in the schedule will be shifted, but the relative length of time for each task is representative of the anticipated actual schedule.

Westside IRWMP Process Timeline



September, 2010

Printed on 50% post-consumer paper





## Budget Narrative

The Westside RWMG IRWMP budget is broken down into five main tasks as outlined in the Work Plan. The total project budget of \$1,586,800 is assumed to be funded through a combination of a \$1 million Proposition 84 planning grant and a \$586,800 local match (37%). The Westside RWMG funding match consists of both in-kind labor and cash contributions. Based on past activities we believe will qualify towards the non-state share funding match and proposed future work hours, the in-kind labor contribution for the Westside RWMG Regional Public Agencies equates to approximately \$330,800. The \$256,000 balance of the local match will be cash contributions. The cash contribution and total grant award are both included in the consultants cost, as shown in the attached budget.

A summary of the overall budget is shown in the table below:

Task No.	Description	Amount, \$
1	Outreach, Facilitation, Communication	461,600
2	Data Collection	211,000
3	Develop IRWMP Components	420,800
4	IRWMP Preparation	406,200
5	Grant Process Administration	87,200
TOTAL		1,586,800

Task 1 requires substantial resources since effective stakeholder outreach and engagement requires a substantial number of meetings throughout the region in addition to development of documents and other means of keeping stakeholders informed. There are also the special requirements for Tribes and Disadvantaged Communities (DAC). The Task 2 budget assumes that a centralized database will not be developed, instead relying on existing resources and developing centralized access to the necessary data. The budget for Task 3 is based on a straightforward approach to each of the required IRWMP components. We expect that there may be a need to move funding among the different subtasks within Task 3 as the work proceeds. The Task 4 budget is fairly straightforward, and based largely on the collective experience of the Regional Public Agencies in preparing draft and final comprehensive planning documents (including the two existing IRWMPs described in the background section of the work plan). Task 5 is an estimate of the costs to administer the grant program, and is based in part on past experience in grant administration for development of the Yolo County IRWMP.

Careful attention has been given to developing the proposed budget consistent with details of the tasks described in the work plan. We also recognize that budget details may change over time due to a refinement of the work plan as a consultant team is selected and the work is scheduled.

**Sharp, Jeff**

---

**Subject:** FW: Public Workshop & CEQA Scoping Meeting on Conditional Grazing Waiver of WDRs for the Napa River and Sonoma Creek Watersheds

---

## Public Workshop & CEQA Scoping Meeting on Conditional Grazing Waiver of WDRs for the Napa River and Sonoma Creek Watersheds

To all Interested Parties:

The San Francisco Bay Regional Water Quality Control Board announces next week's public workshop and California Environmental Quality Act (CEQA) scoping meeting related to the forthcoming conditional waiver of waste discharge requirements for grazing activities in the Napa River and Sonoma Creek watersheds. The meeting will take place on Wednesday, January 12, 2011, at 6:00 PM at the Schell-Vista Fire Station located at 22950 Broadway Sonoma, CA 95476.

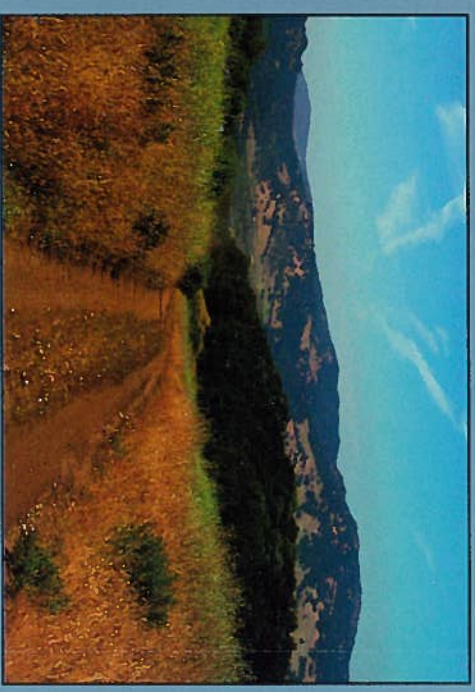
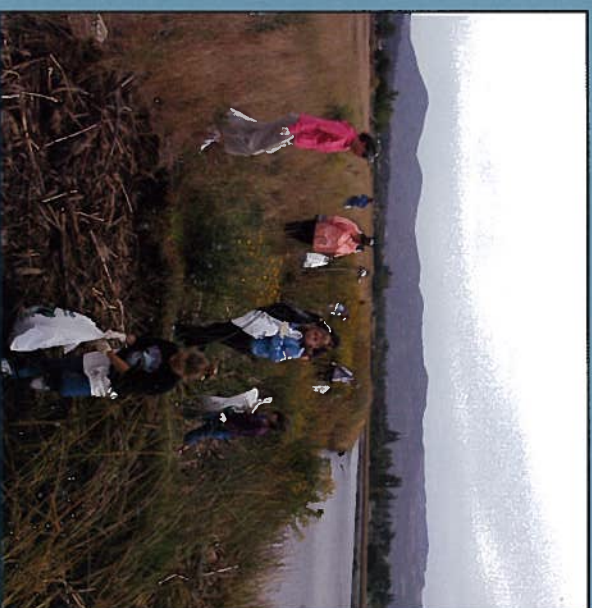
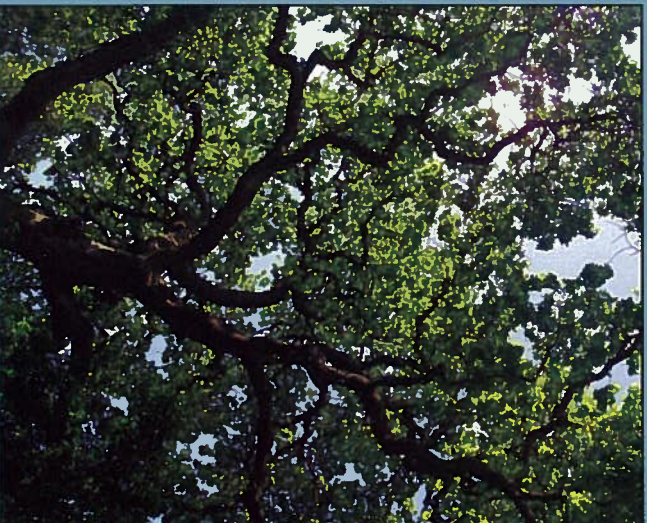
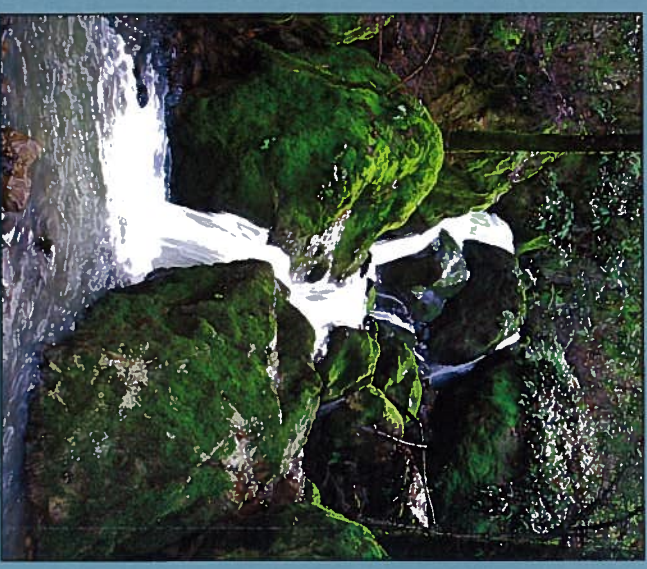
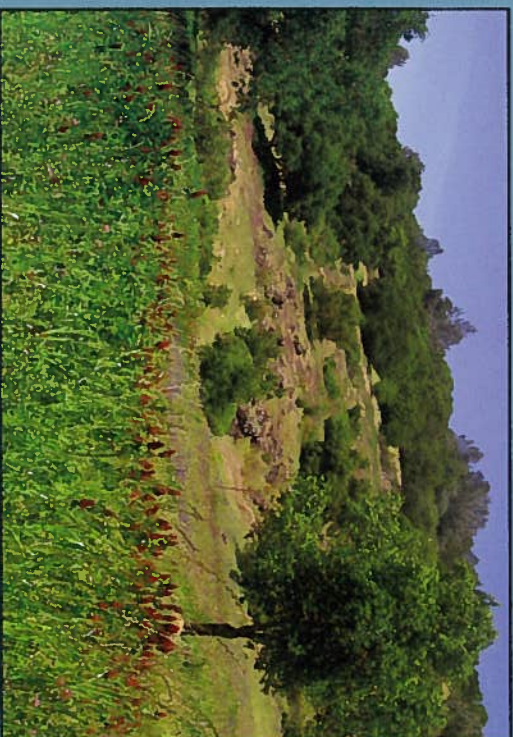
We apologize if this e-mail makes it to you in error; our records show you were on the interested party list related to the implementation of TMDLs for the Napa River or Sonoma Creek.

For further information on the public workshop/CEQA scoping meeting, please access [http://www.waterboards.ca.gov/sanfranciscobay/press\\_room/announcements.shtml#ann1](http://www.waterboards.ca.gov/sanfranciscobay/press_room/announcements.shtml#ann1) or contact Rico Duazo at (510) 622-2340 or via email at rduazo @waterboards.ca.gov.

---

*Carmen R. Fewless*  
Environmental Scientist  
San Francisco Bay Water Board  
TMDL Implementation Section  
1515 Clay Street, Suite 1400  
Oakland, CA 94612  
Phone: (510) 622-2316  
FAX: (510) 622-2501  
email: [cfewless@waterboards.ca.gov](mailto:cfewless@waterboards.ca.gov)

# Celebrating Napa County's Watersheds 2011 Calendar



# EarthDay

*Building Awareness & Inspiring Change*

**Saturday, April 23, 2011  
11:00 to 5:00**

**Downtown Napa**

Presented by:

[The Environmental Education Coalition of Napa County](#)



## **Event Highlights**

Free games for all ages will be conducted throughout the day.

Enjoy live entertainment for the whole family.

Lunch, snacks, beer and wine will be sold by local providers.

**In order for us to offer food, the City requires that dogs not be allowed at this event.**

## **Booth Application**

Click [here](#) for a booth application. Booths are for Nonprofit organizations, government agencies, commercial enterprises, and food & beverage vendors.

## **Get Involved**

Volunteers are needed to set up and to help with activities.

Please contact Bonnie Buss at 707-944-0799 or e-mail:

[BonnieBussEvents@aol.com](mailto:BonnieBussEvents@aol.com).